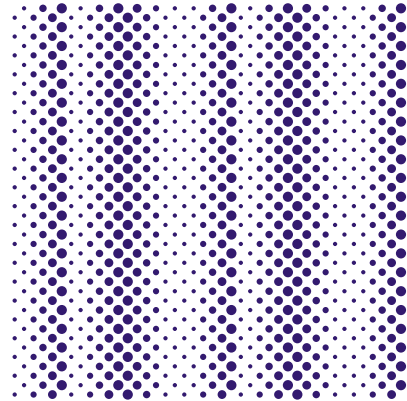


I've always been intrigued by patterns; the abstract dot compositions of blown-up halftone photographs, the interference patterns of superimposed grids known as moiré, and the shadows of tree leaves on the sidewalk. These were some of the inspirations for the Puzzler patterns.

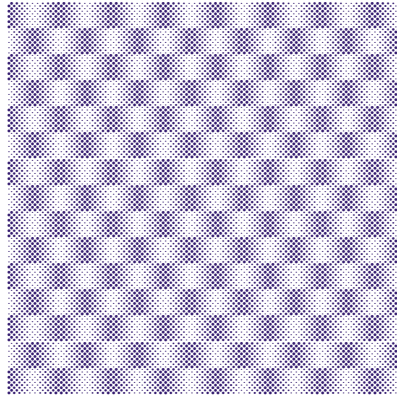
Some of the Puzzler elements started as dot grids of various sizes and frequencies. Others started as leaf or floral shapes that were arranged into interlocking compositions. In fact, many came about as happy accidents; some elements looked random or abstract until their repetitions surprised me with unexpectedly fluid patterns.

The elements are arranged into three categories of fonts: Puzzler Halftone, Puzzler Geometric and Puzzler Floral. Each element is accessed through a letter on the keyboard, making it easy to repeat the elements with precise scaling and positioning. This booklet shows some of the patterns that can be composed with the Puzzler fonts; but the variety is endless.

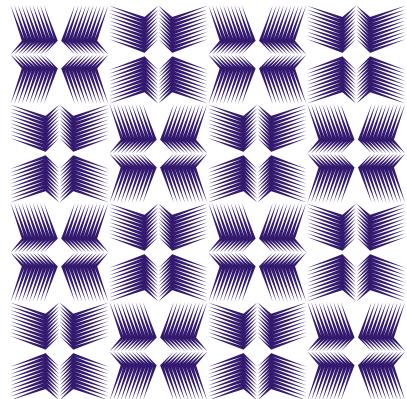
-Zuzana Licko



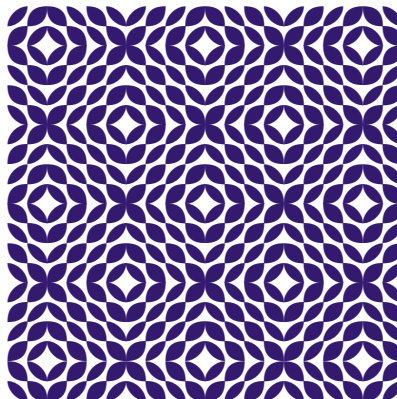
Puzzler Halftone Coarse Pages 3-7



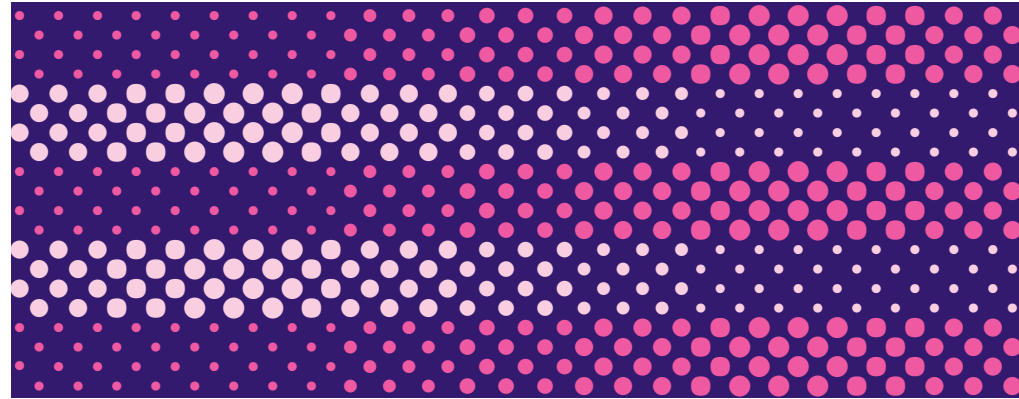
Puzzler Halftone Fine Pages 8-14



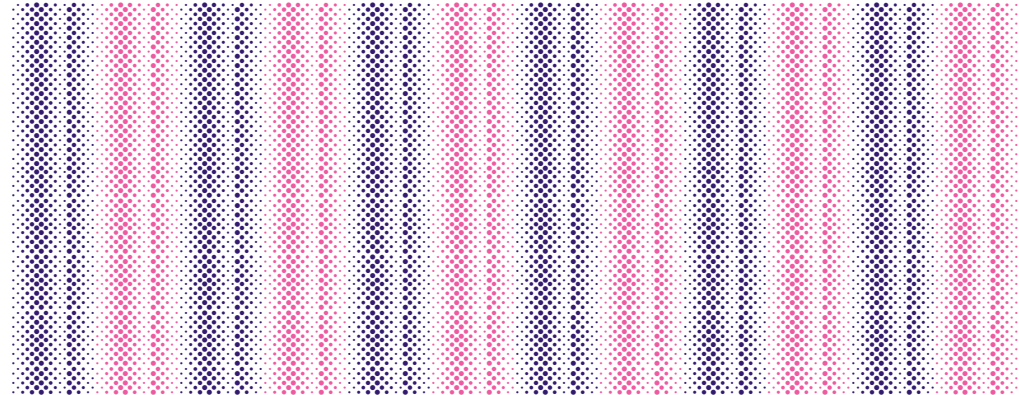
Puzzler Geometric Pages 15-22



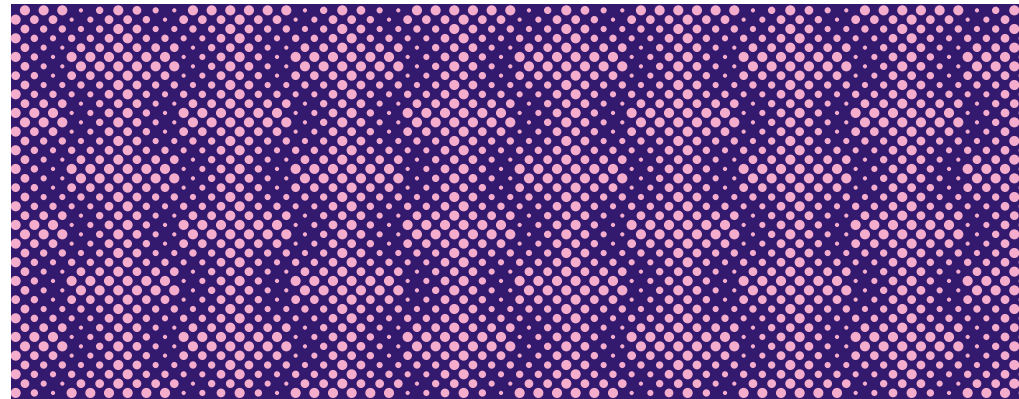
Puzzler Floral Pages 23-30



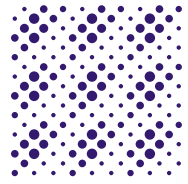
!!!!!!!!!!@#@##\$\$\$\$%666%\$\$ | ... | \$\$\$%666%\$\$\$\$##@#@!!!!!!!!!!!! | ...



jjjjjjj... | ...



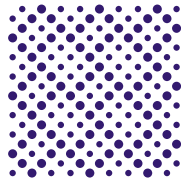
MmLLmLLmLL... | LLmLLmLLmLL... | ...



aaa | ...



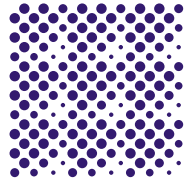
A



eee | ...



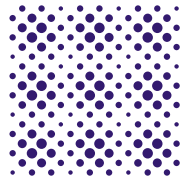
E



bbb | ...



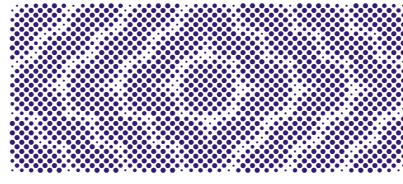
B



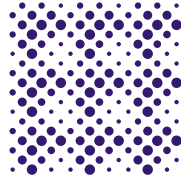
fff | ...



F



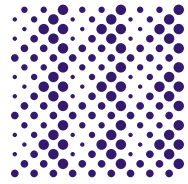
BbBbBbCcCcCcC | etc.



ggg | ...



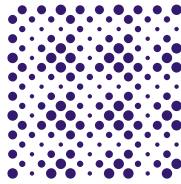
G



ddd | ...



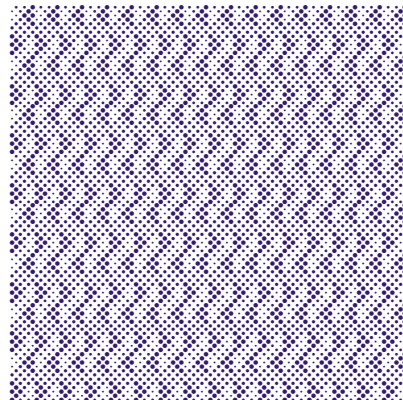
D



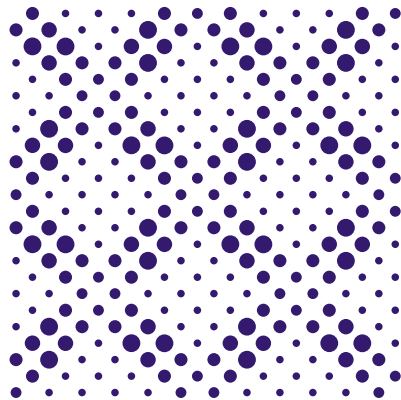
hhh | ...



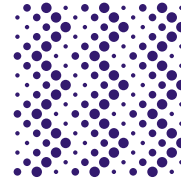
H



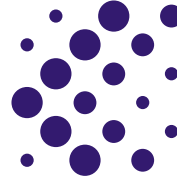
ddddddddd... | DDDDDDDDD... | ...



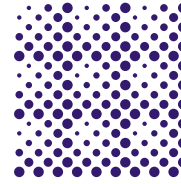
aAa | aAa | ...



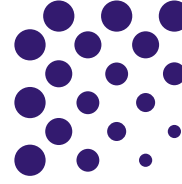
iii | ...



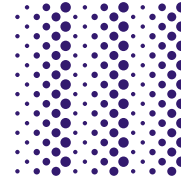
I



mmm | ...



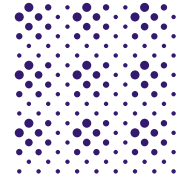
M



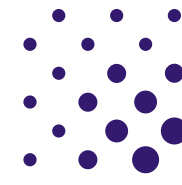
jjj | ...



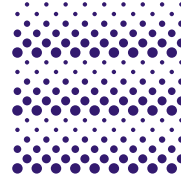
J



ooo | ...



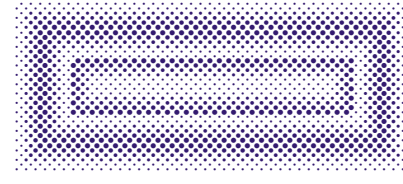
O



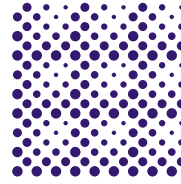
kkk | ...



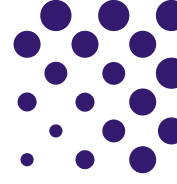
K



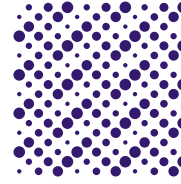
Ok...kN | jMK...KLJ | jMK...KLJ | etc.



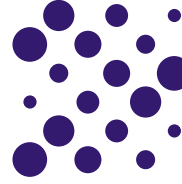
lll | ...



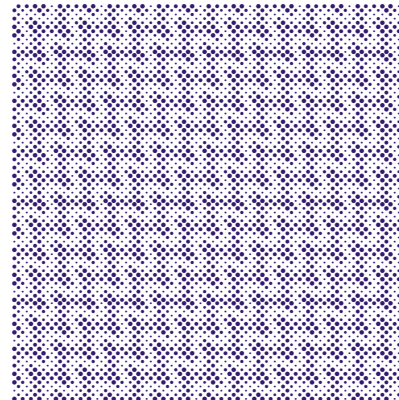
L



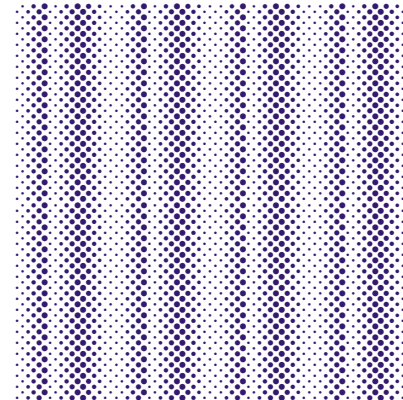
ppp | PPP | ...



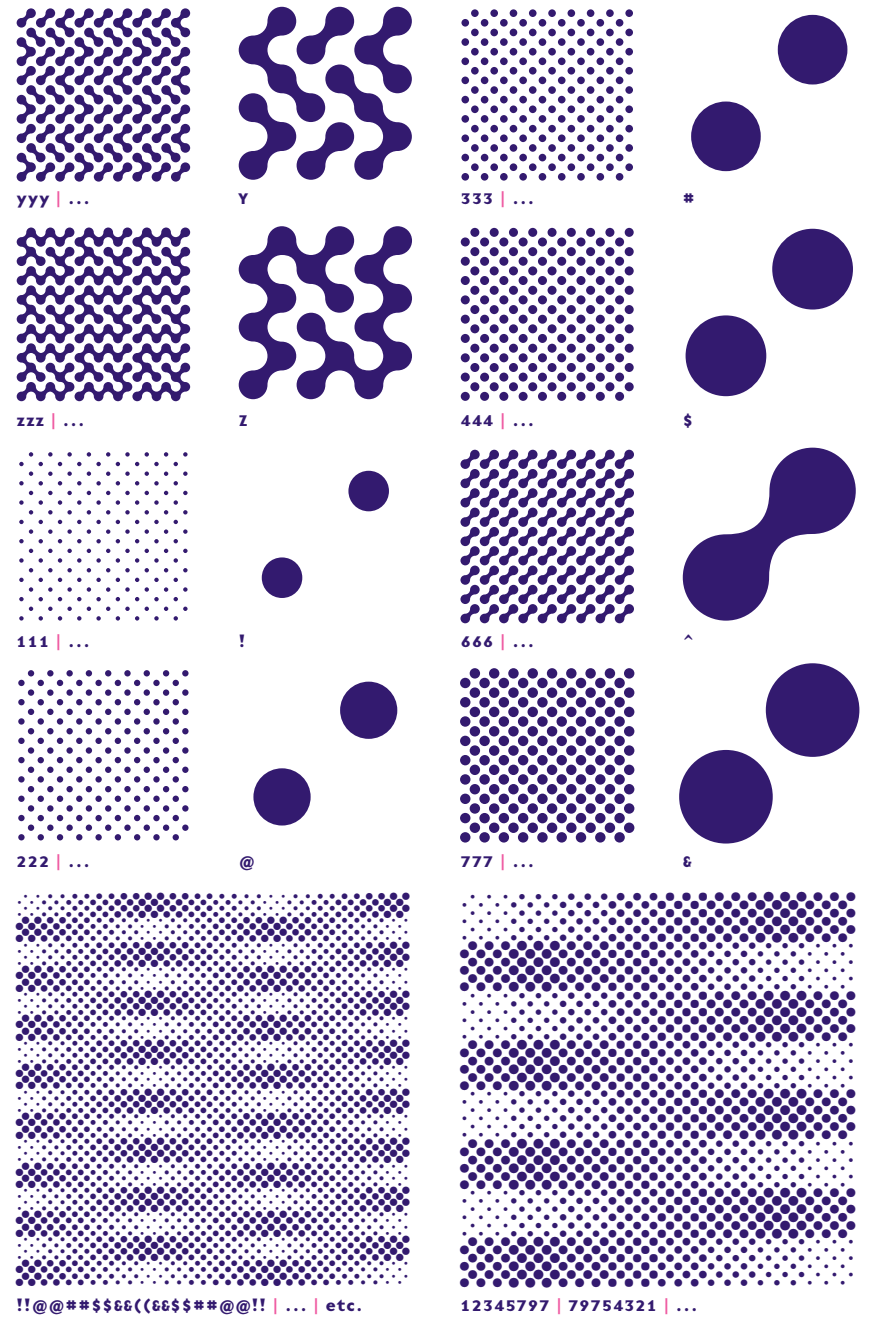
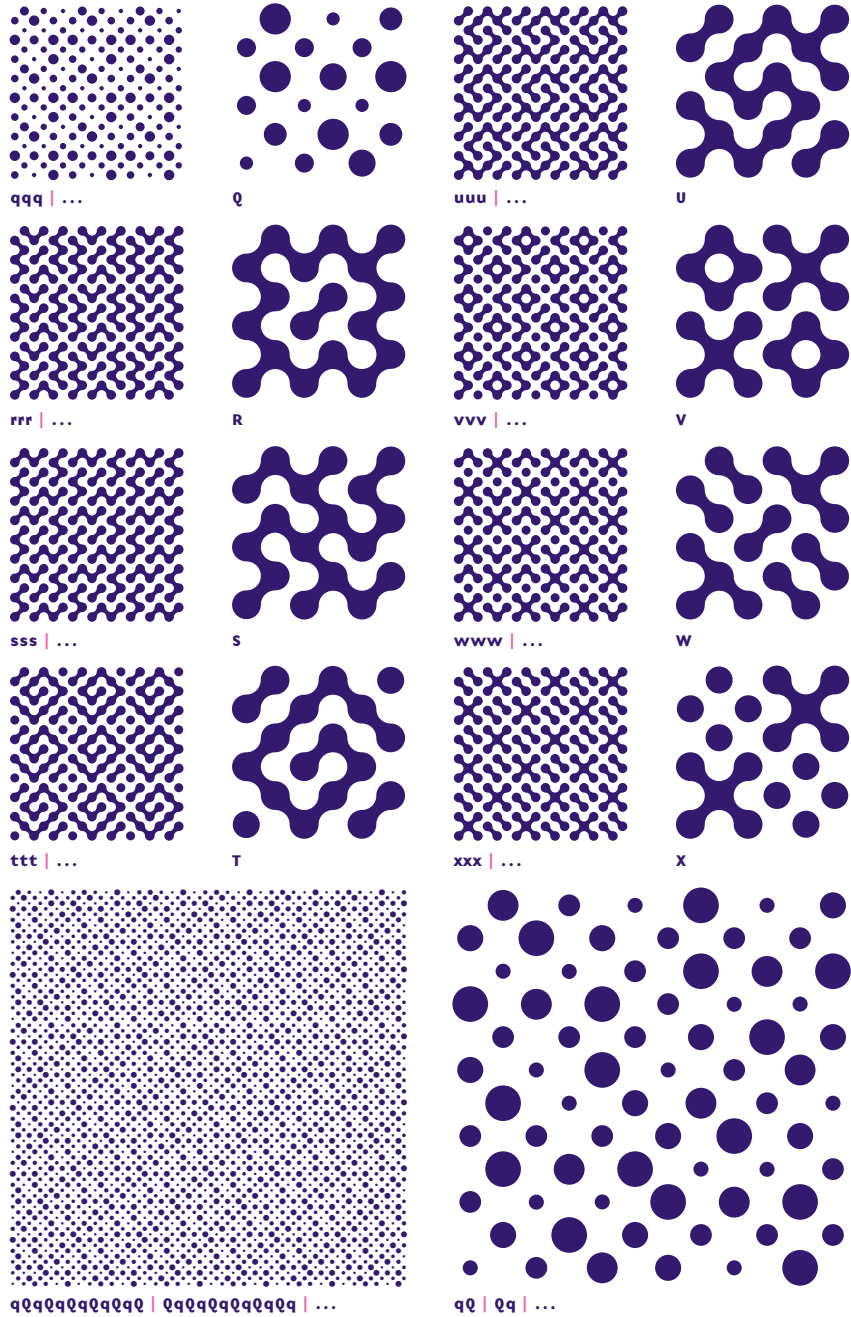
P

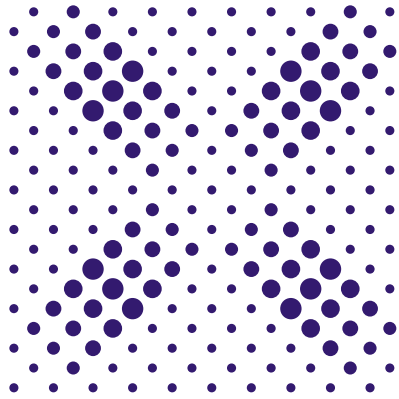


hHhHh... | HhHhHh... | ...

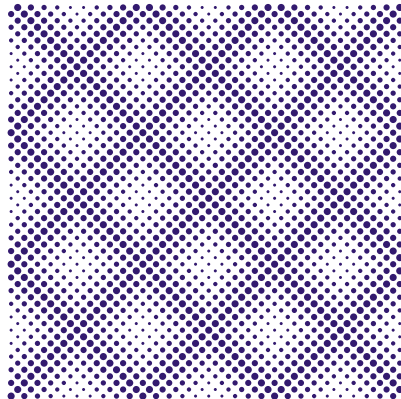


jjj | jjj | ...

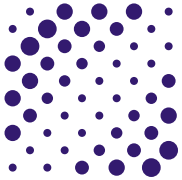




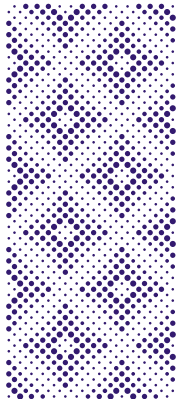
Ra | aR



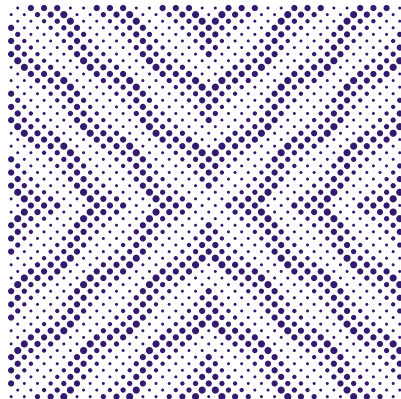
BbbBbb | bBbBbb | ...



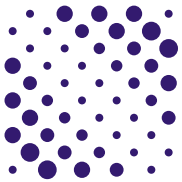
c



CcC | cCc | ...



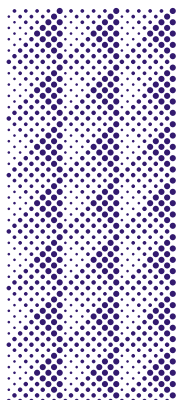
CCCccc | ... | cccCCC | ...



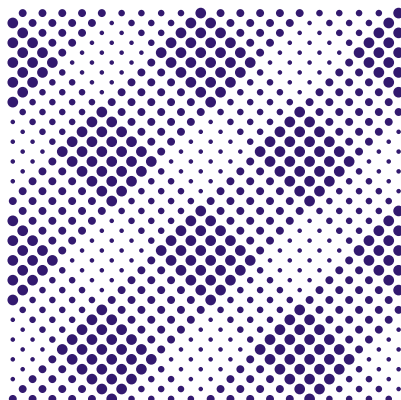
c



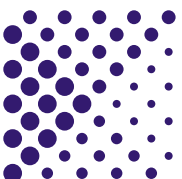
d



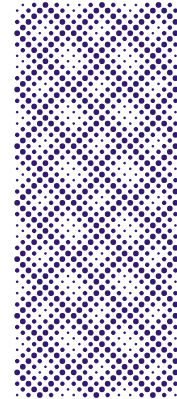
ddd | ...



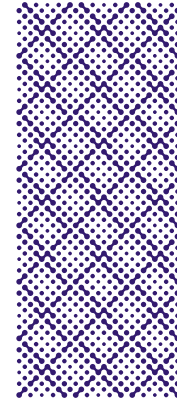
Ddd | dDd | ...



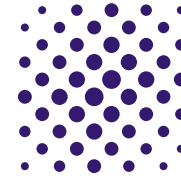
D



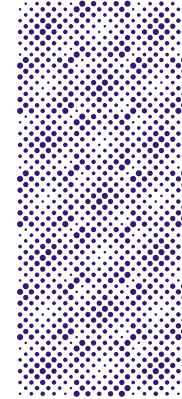
eee | ...



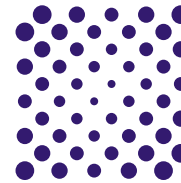
EEE | ...



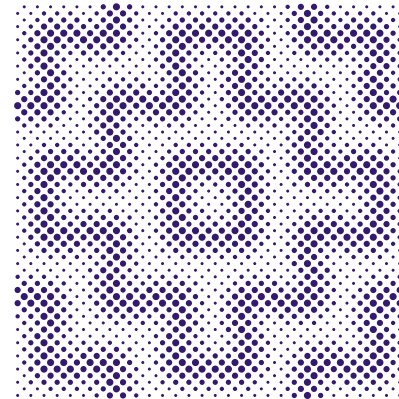
f



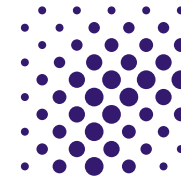
fFf | FfF | ...



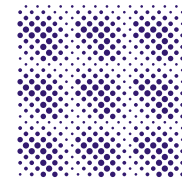
F



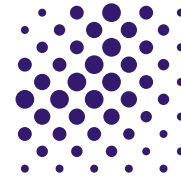
gGgHh | GgGHhH | ... | HhGgG | hHhgGg | ...



g



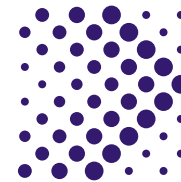
hhh | ...



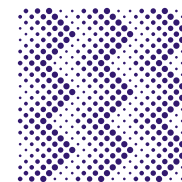
G



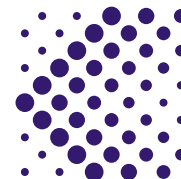
HH | HH



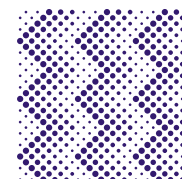
i



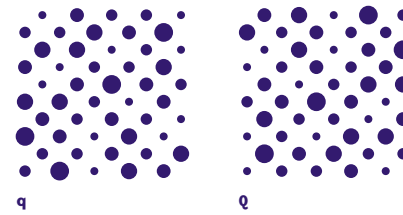
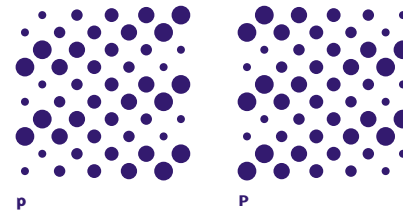
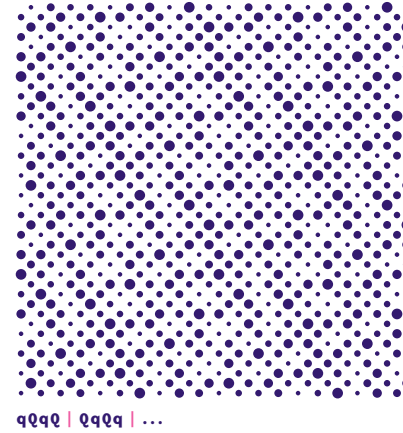
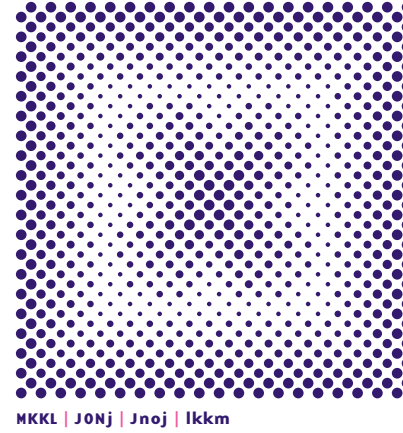
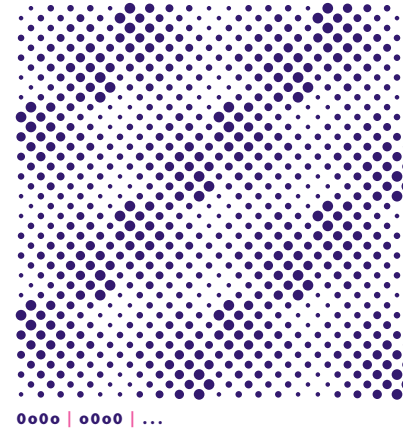
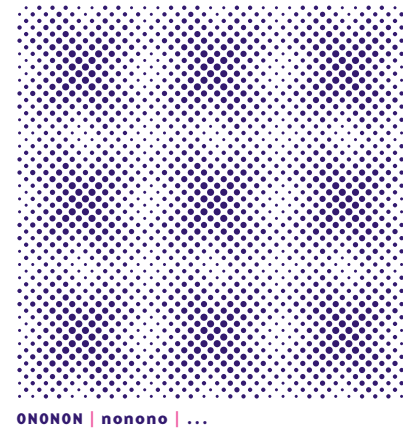
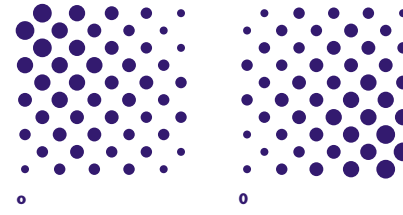
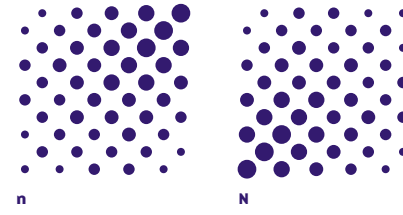
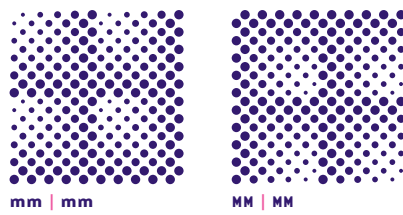
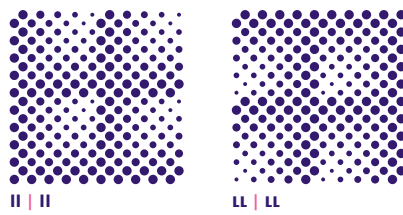
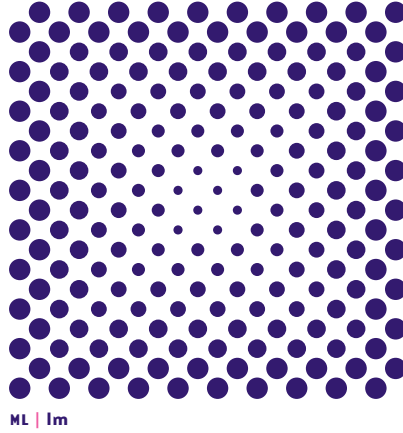
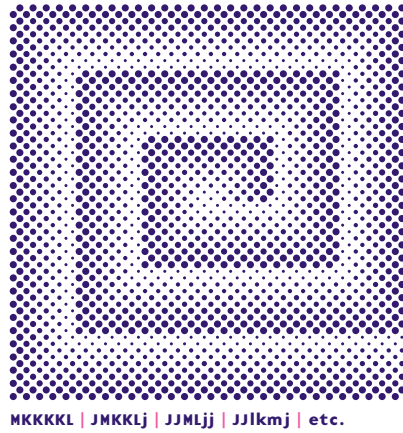
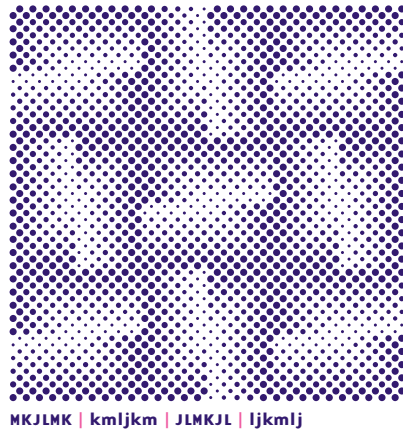
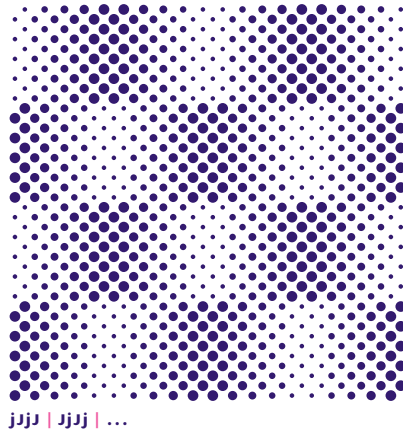
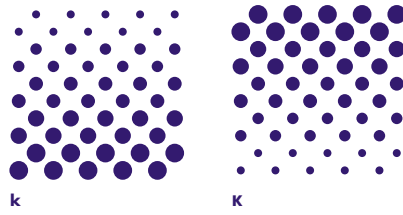
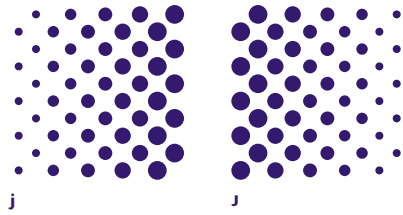
iii | ...

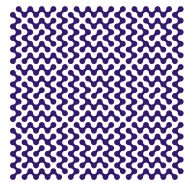


I

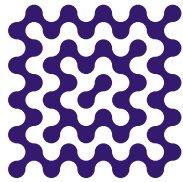


III | ...

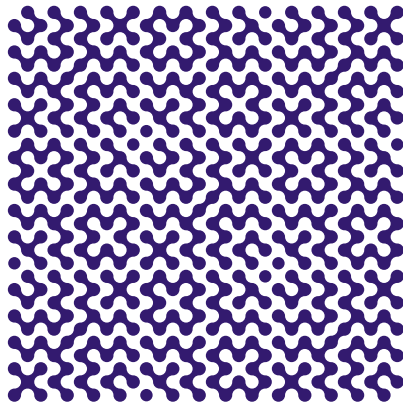




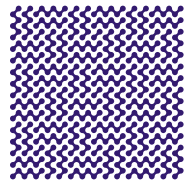
rrr | ...



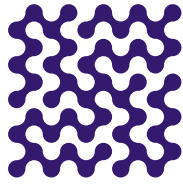
R



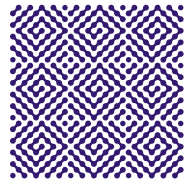
XxX | xXx | ...



sss | ...



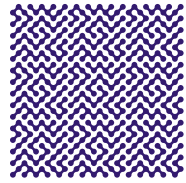
S



ttt | ...



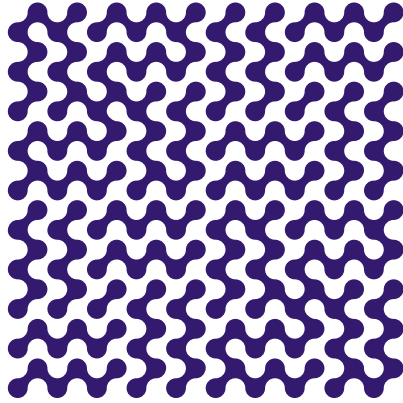
T



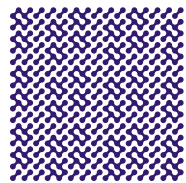
uuu | ...



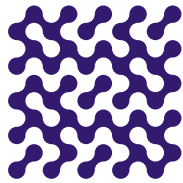
U



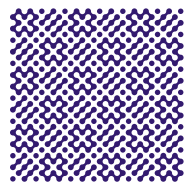
Ss | sS



vvv | ...



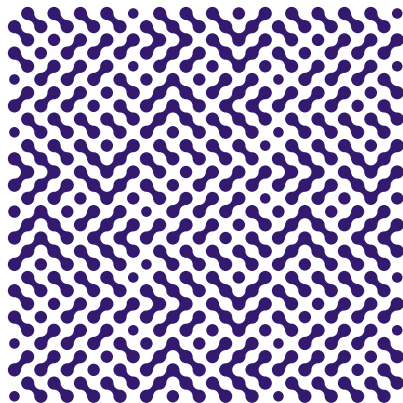
V



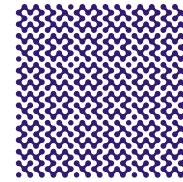
www | ...



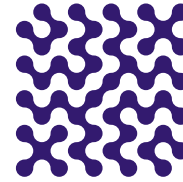
W



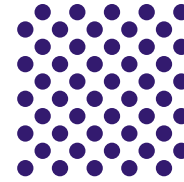
yYy | YyY | ...



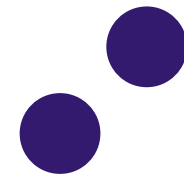
xxx | ...



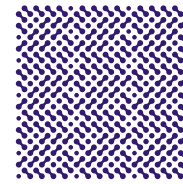
X



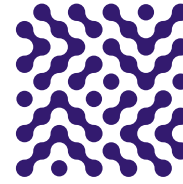
4



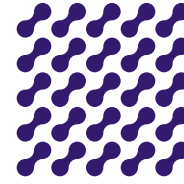
\$



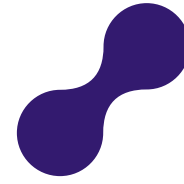
yyy | ...



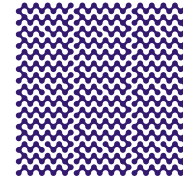
Y



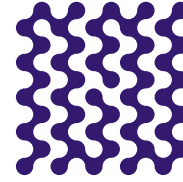
6



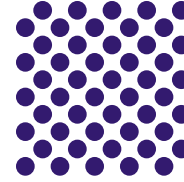
^



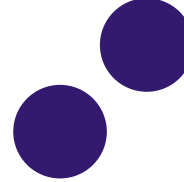
zzz | ...



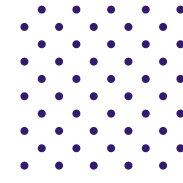
Z



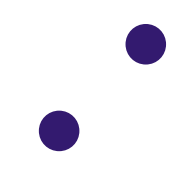
7



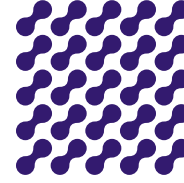
8



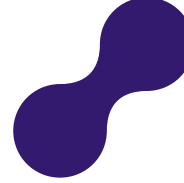
1



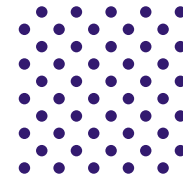
!



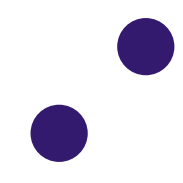
8



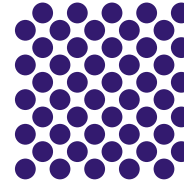
*



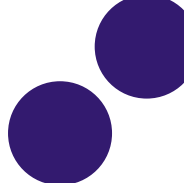
2



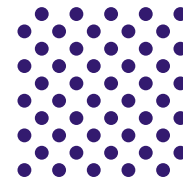
@



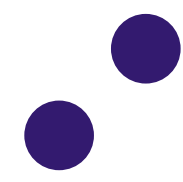
9



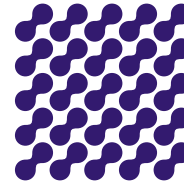
(



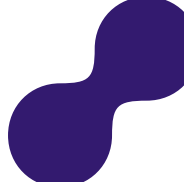
3



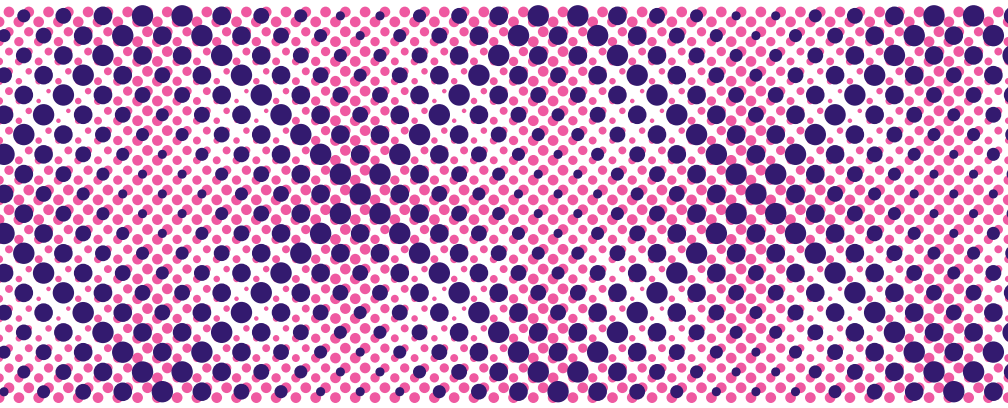
#



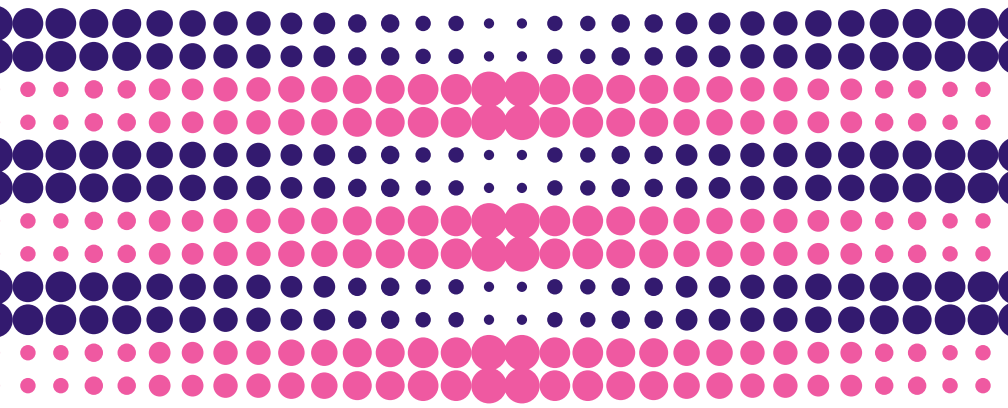
0



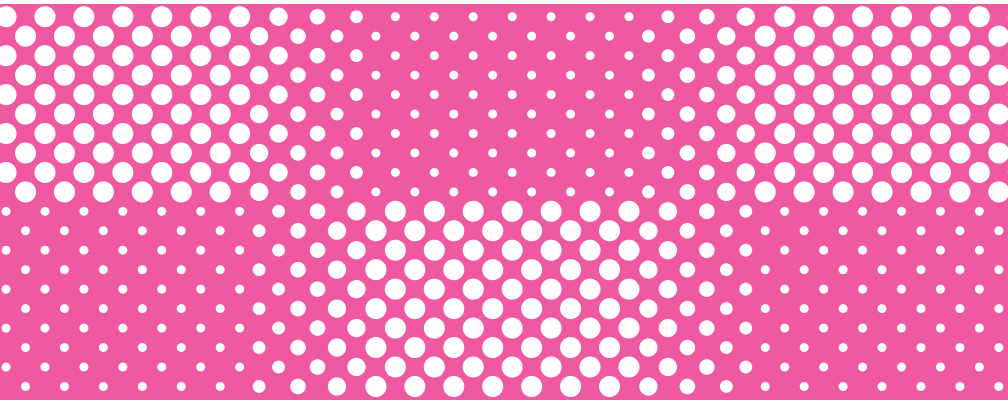
)



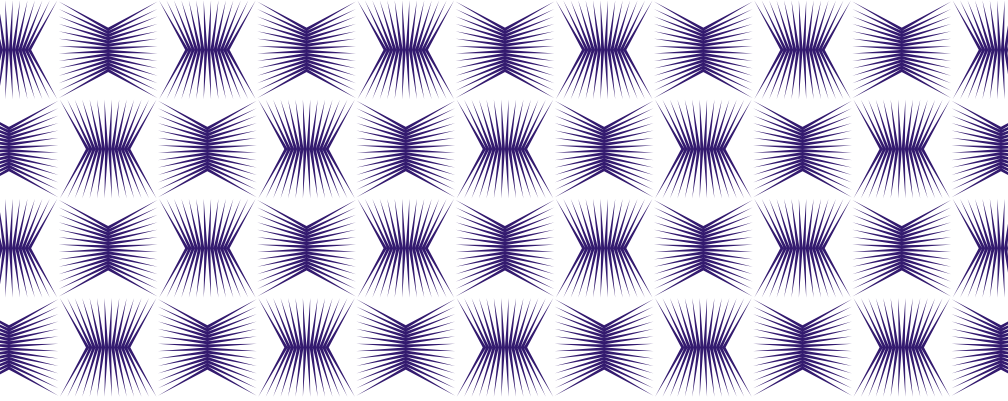
Front Layer: bBbBbB | BbBbBb Back Layer: 50% point size of front: MLMLML... | lmlmlm... | ...



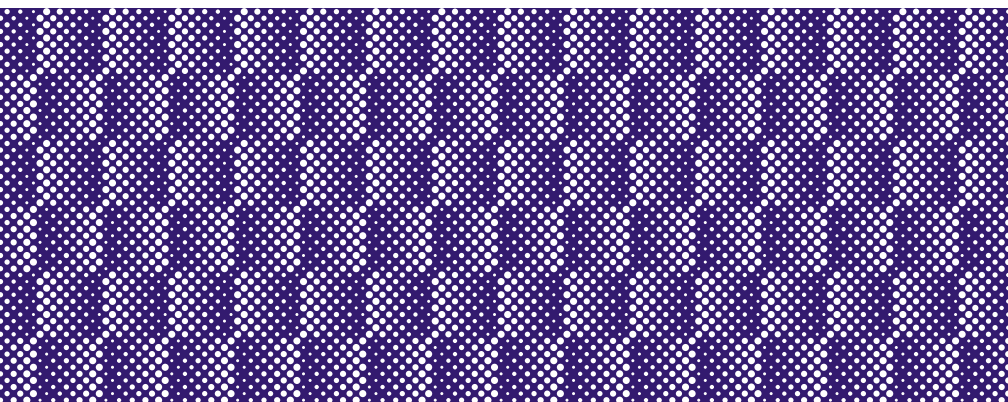
(*&^%\$#@!@#\$\$%^&*(!@#\$\$%^&*(&^%\$#@! | ...



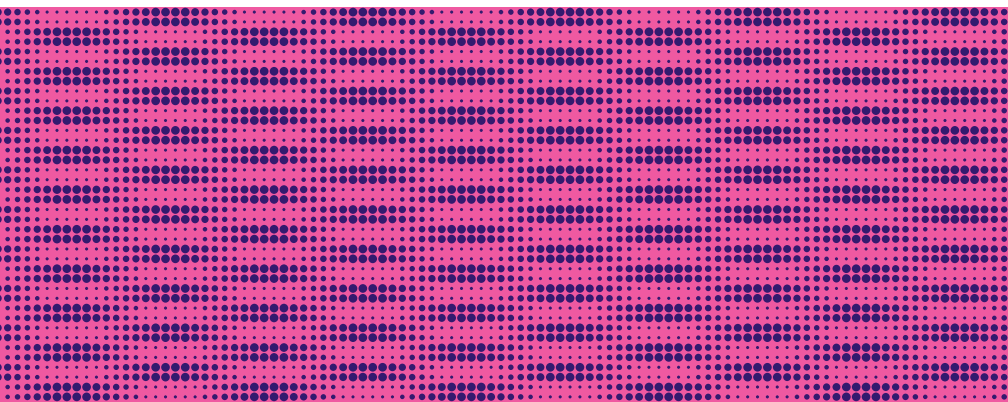
1j7J1 | 7J1j7



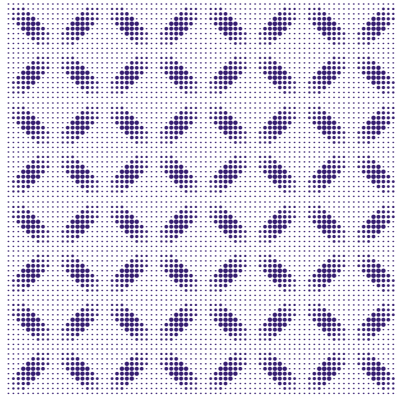
VvVvVv... | VvVvVv... | ...



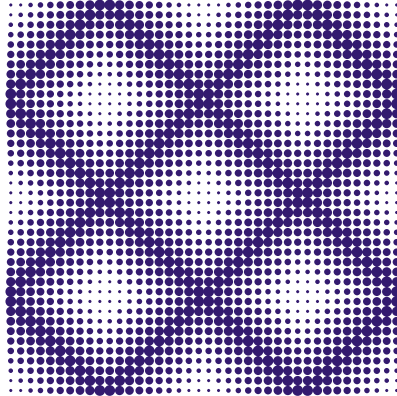
JJJ... | jjj... | ...



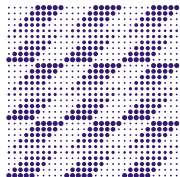
EeEeEe... | eEeEeE... | ...



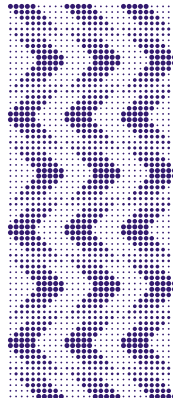
RaRaRaRa | aRaRaRa | ...



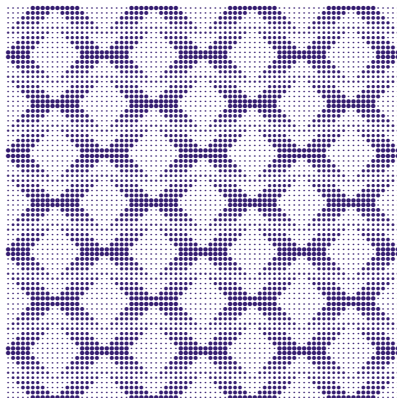
bBbB | BbBb | ...



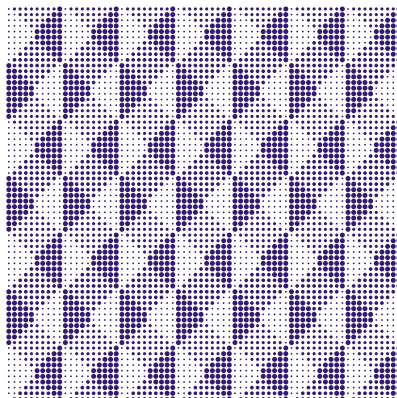
ccc | ...



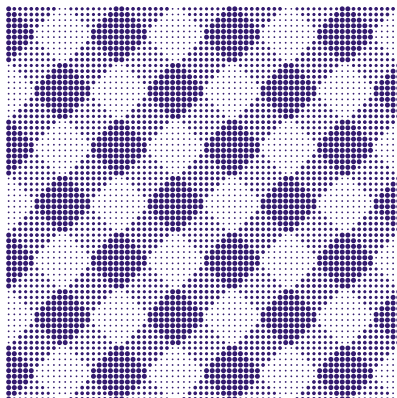
CCC | ccc | ...



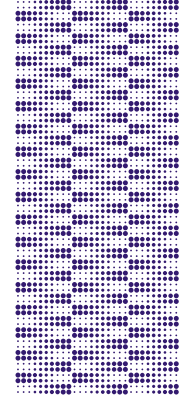
cCcCcCc | CcCcCcC | ...



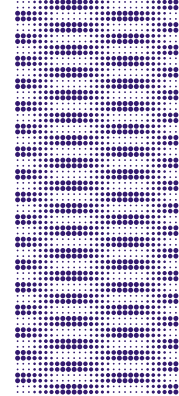
dddddd | DDDDDD | ...



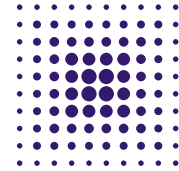
DdDdDd | dDdDdD | ...



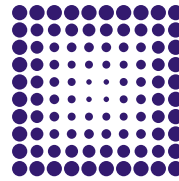
eee | EEE | ...



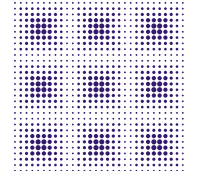
eEe | EeE | ...



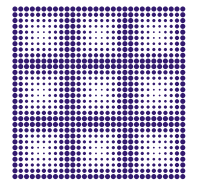
f



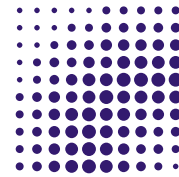
F



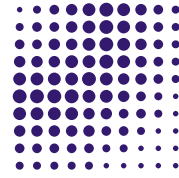
fff | ...



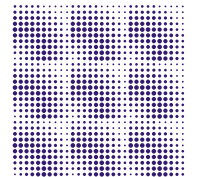
FFF | ...



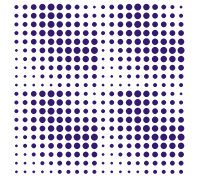
g



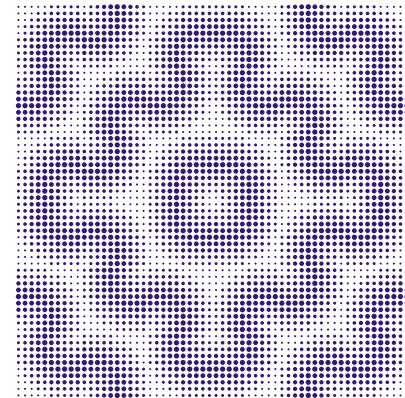
G



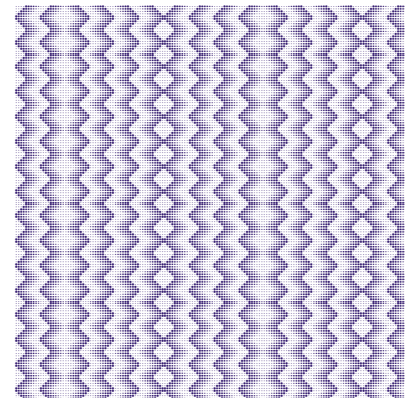
hhh | ...



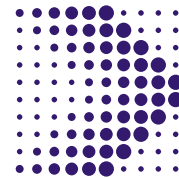
HH | ...



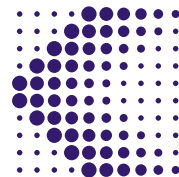
gGghHh | GgGHhH | ... | HhGgG | hHhGg | ...



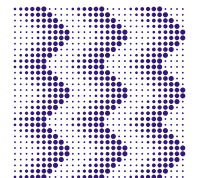
IiiiiIIIIiiii | ...



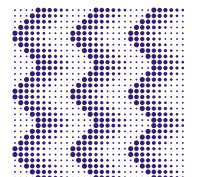
i



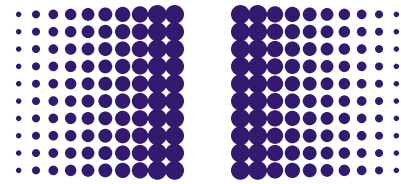
I



iii | ...

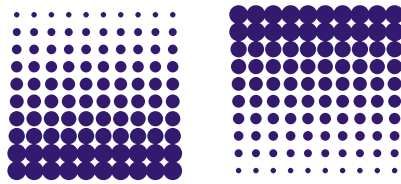


III | ...



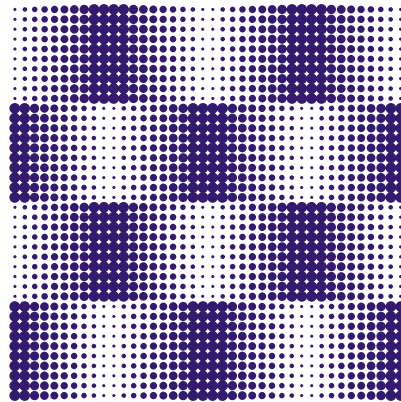
j

J

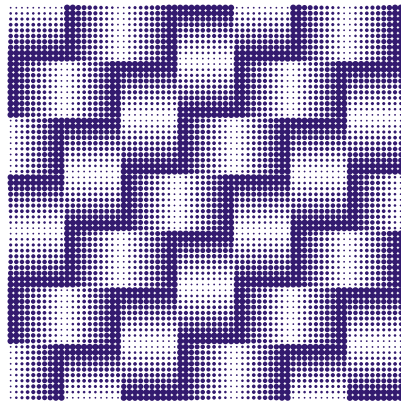


k

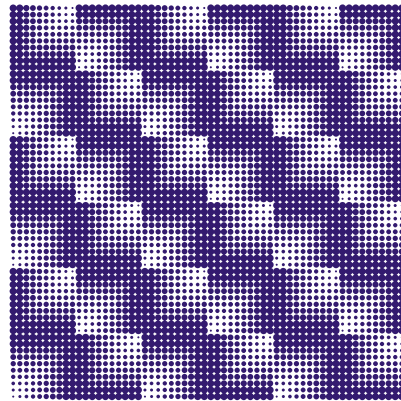
K



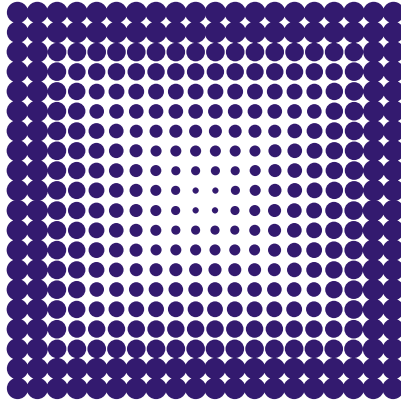
jJj | JjJ | ...



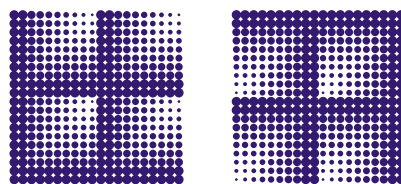
kJk... | Jjk... | jKk... | KkJ... | ...



lLlLl | LlLlL | ...

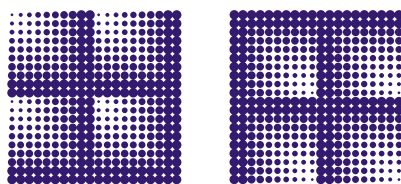


Ml | lM



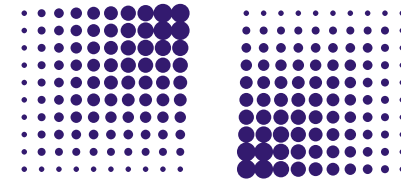
ll | ...

Ll | ...



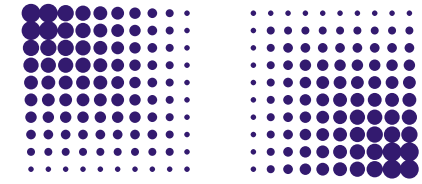
mm | ...

MM | ...



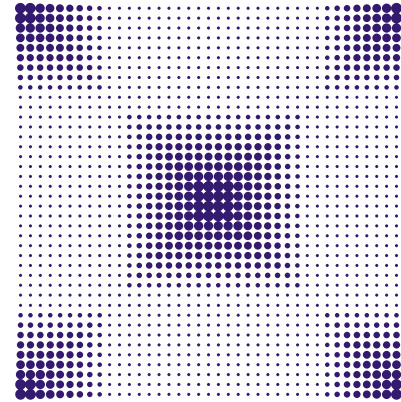
n

N

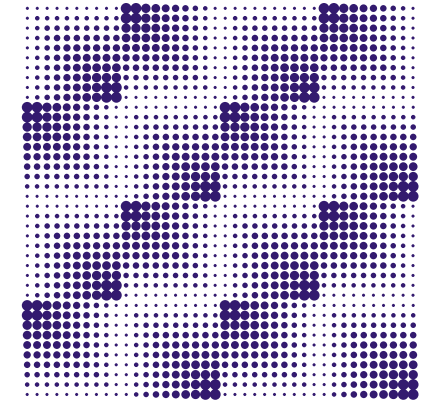


o

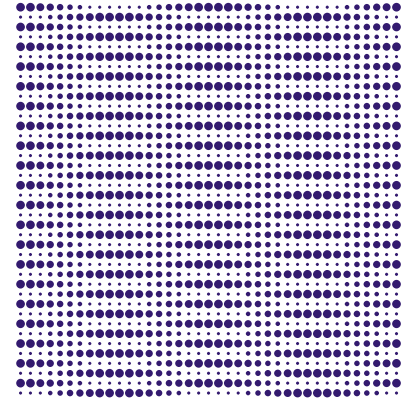
O



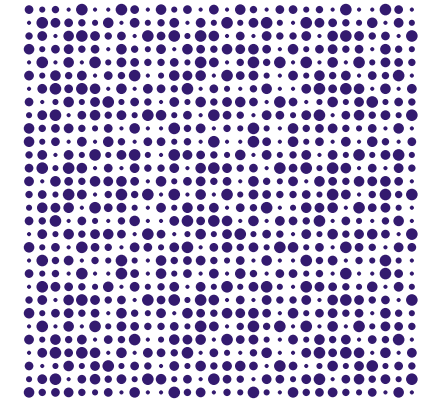
o11n | 10N1 | 1no1 | N110



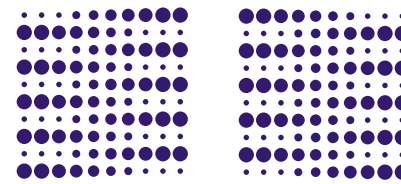
0o0o | o0o0 | ...



PpPp | ...

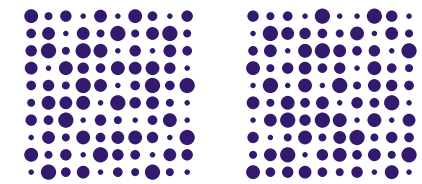


QqQ | qQq | ...



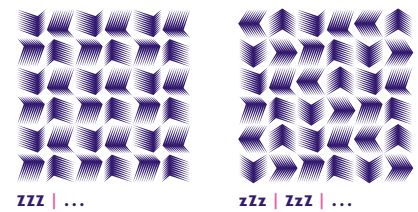
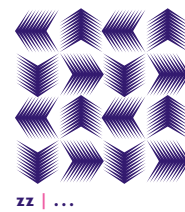
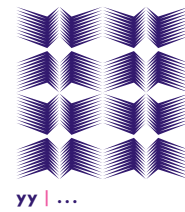
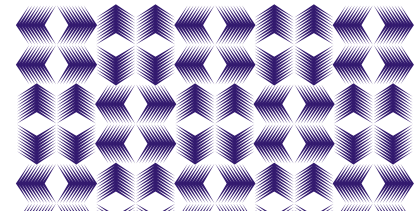
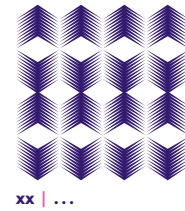
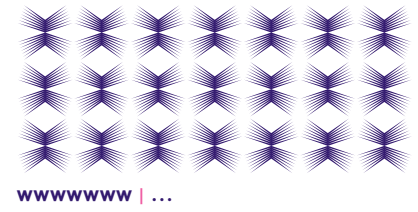
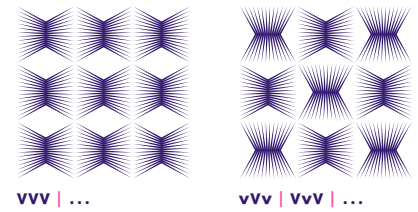
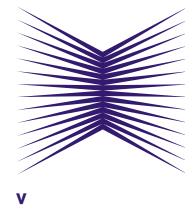
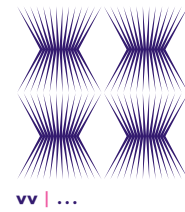
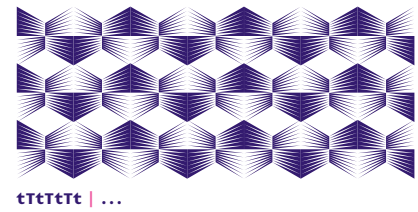
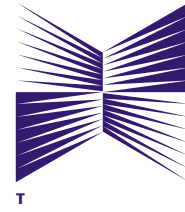
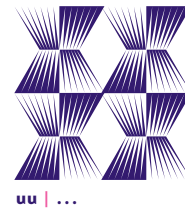
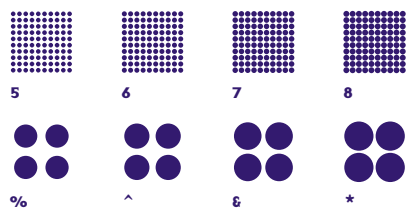
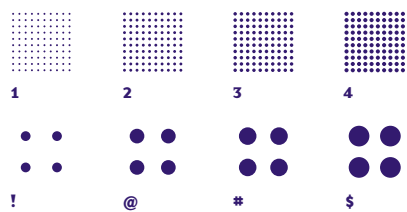
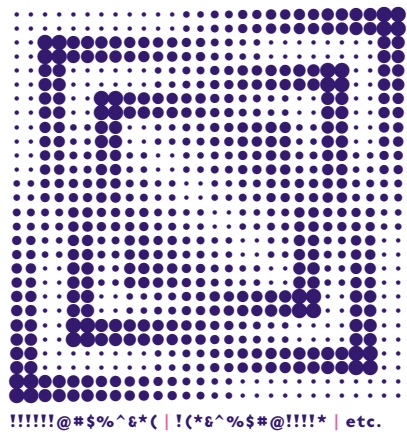
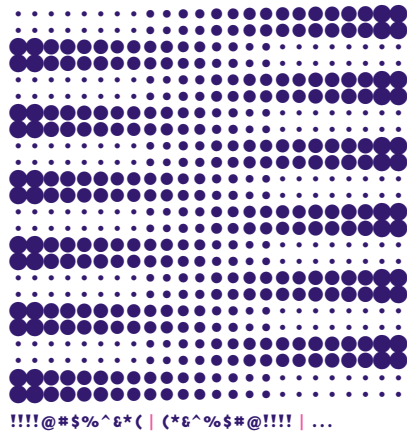
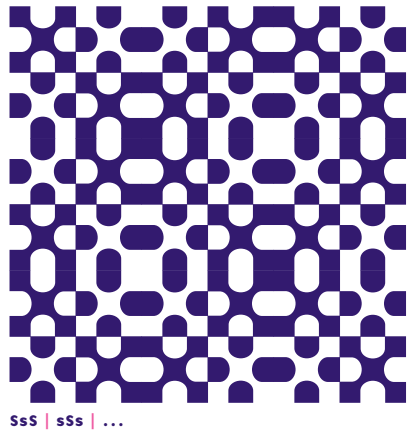
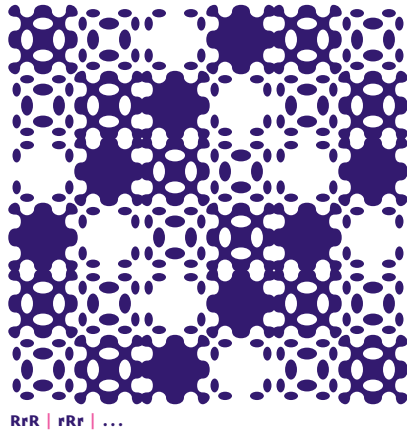
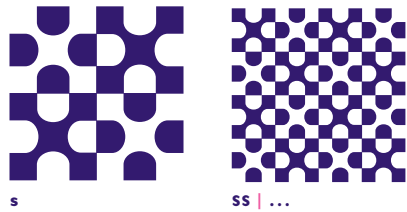
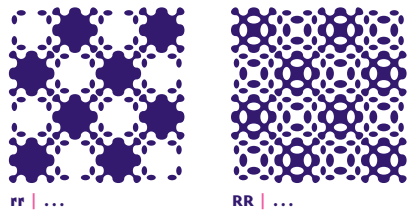
p

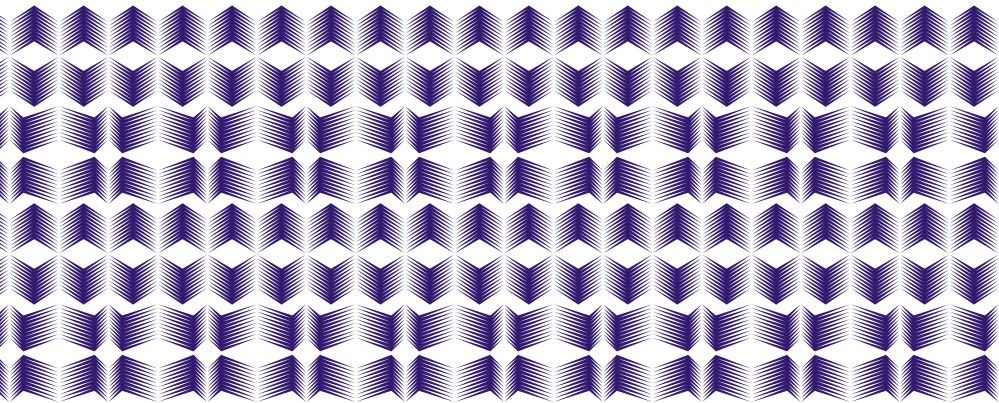
P



q

Q

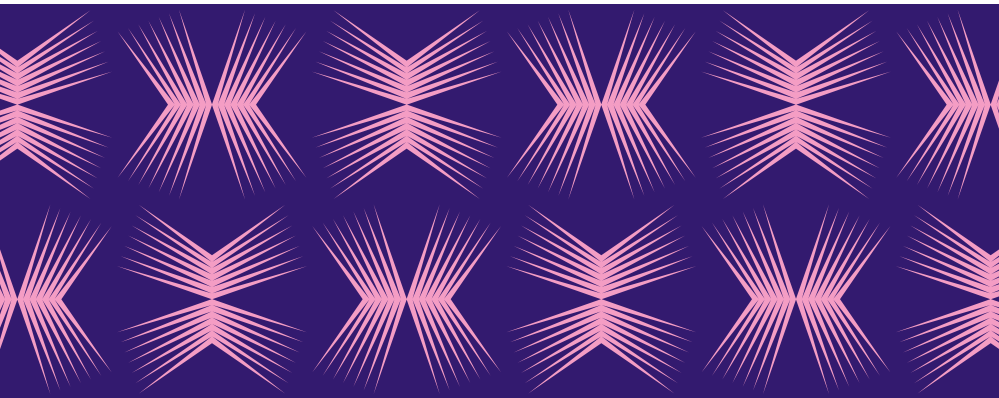




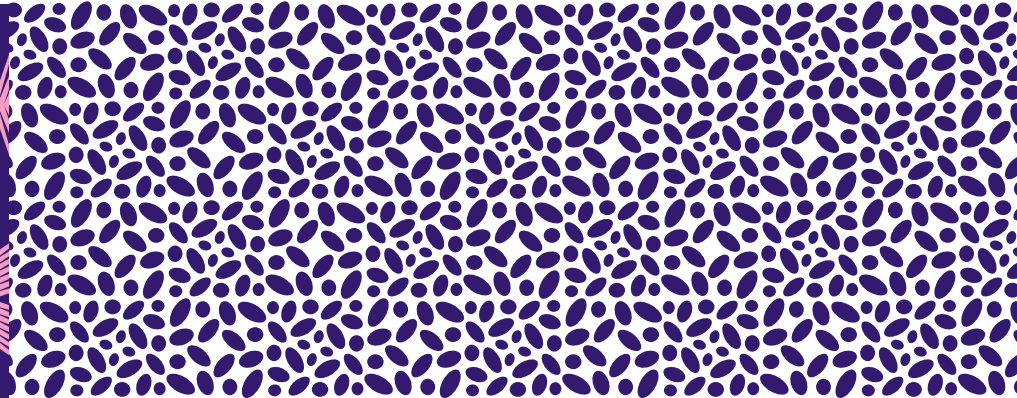
xxx... | yyy... | ...



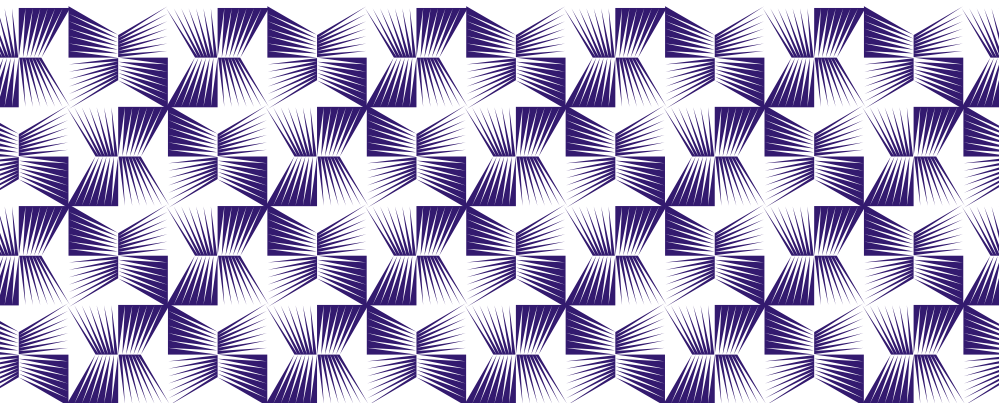
CCC... | ... | cCc... | ... | ...



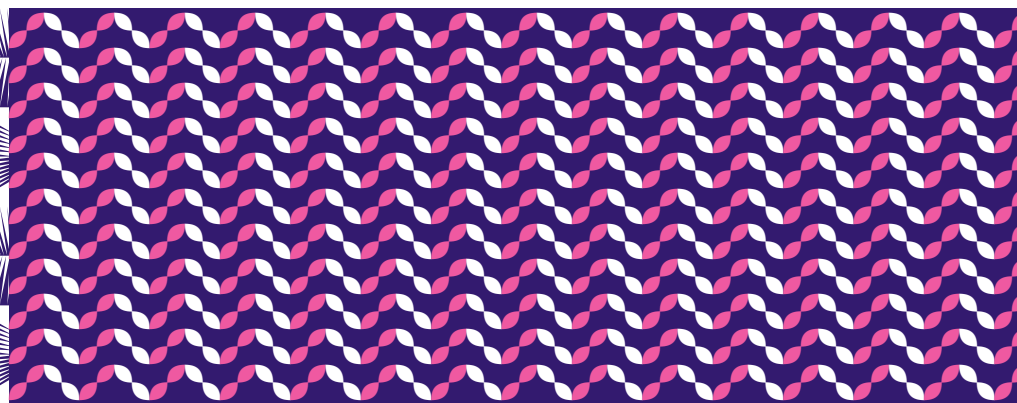
WwWwW | wWwWw



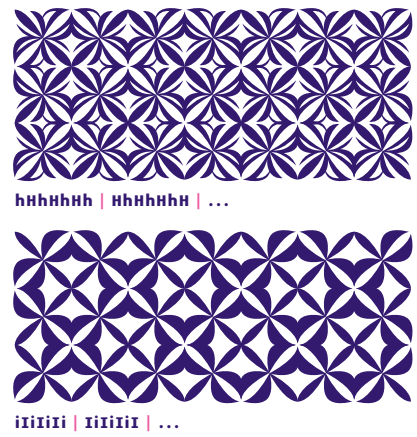
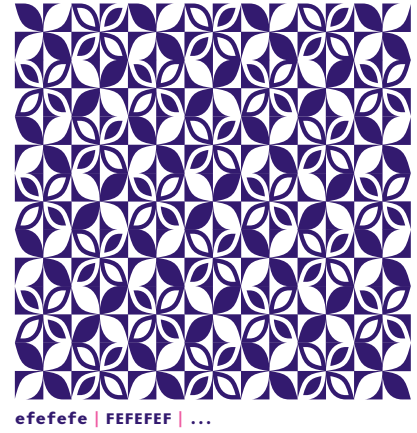
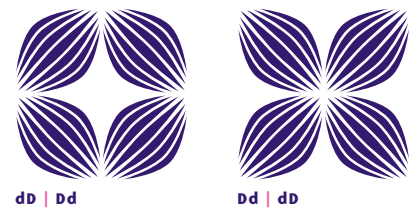
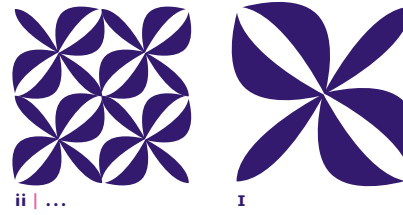
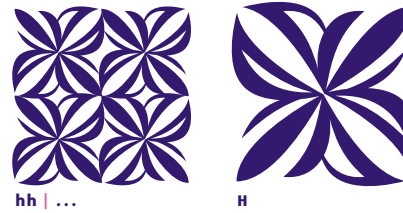
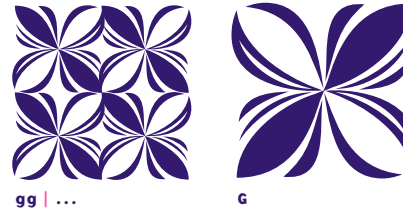
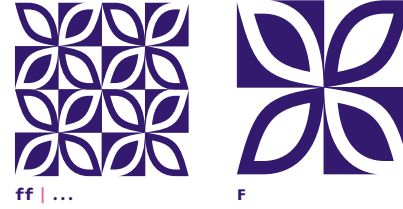
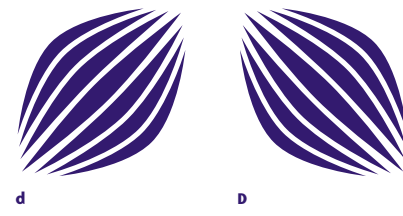
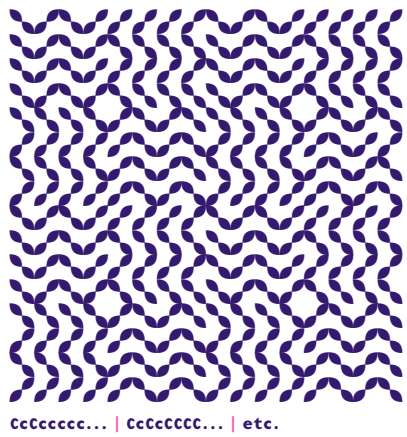
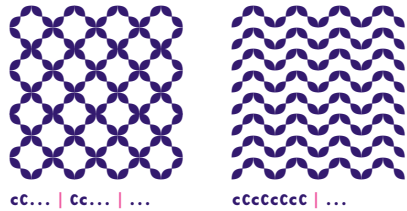
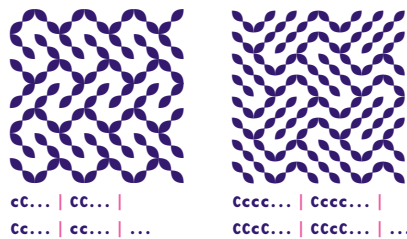
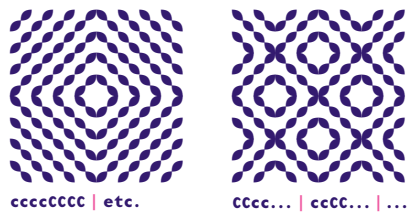
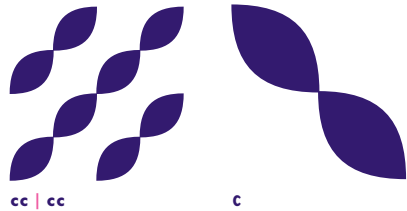
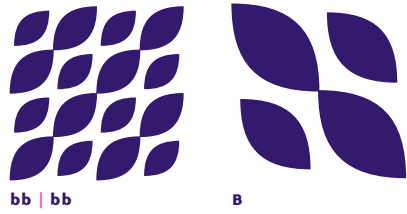
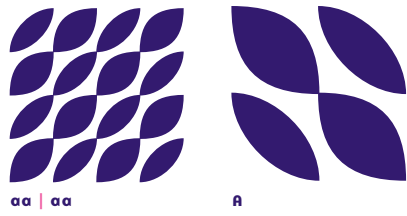
o(o(o(... | (o(o(o(... | ...

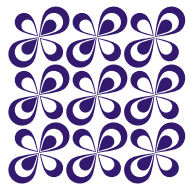


ututut... | tututu... | ...

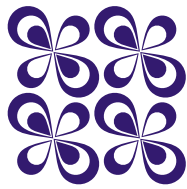


cCcCcC... | ...

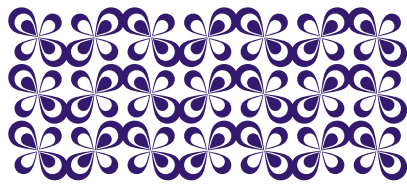




jji | ...



JJ | ...



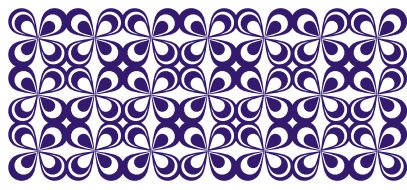
JzJzJ | ...



kk | ...



K



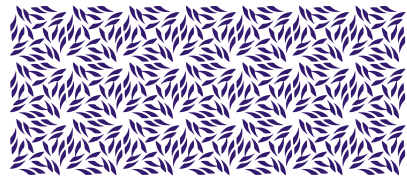
kKkKkKk | KkKkKkK | ...



l



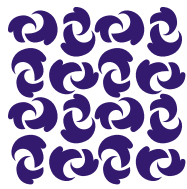
LL | ...



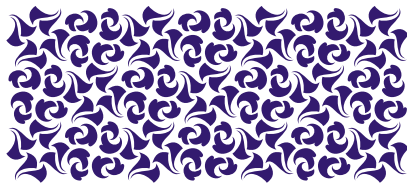
llllll | ...



mm | ...



MM | ...



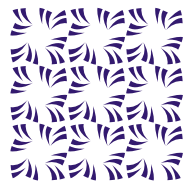
mMmMmMm | MmMmMmM | ...



nn | ...



N



NNN | ...



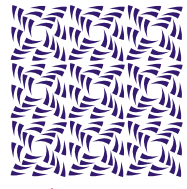
nNnN | NnNn | ...



oo | ...



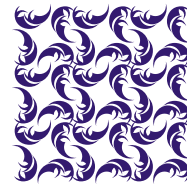
O



ooo | ...



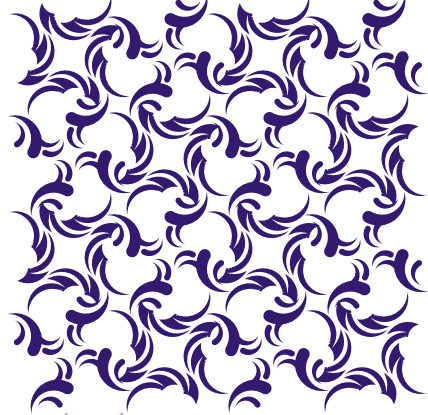
nono | onon | ...



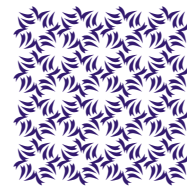
ppp | ...



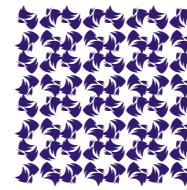
P



rRrR | RrRr | ...



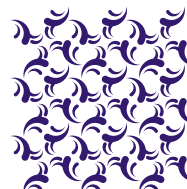
qqqq | ...



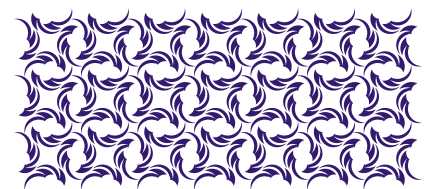
QQQQ | ...



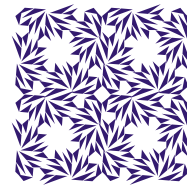
r



RRR | ...



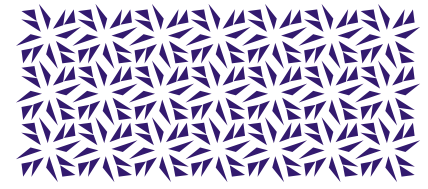
rrrrrr | ...



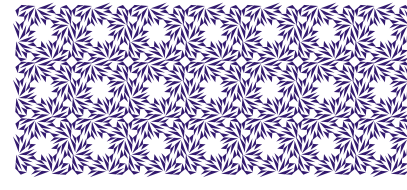
ss | ...



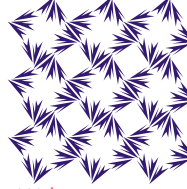
S



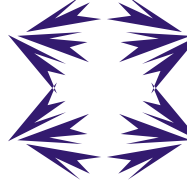
SSSSSS | ...



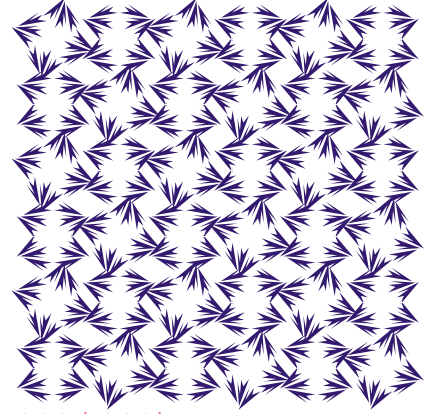
SSSSSS | ...



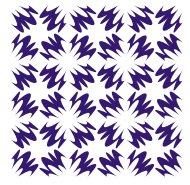
ttt | ...



T



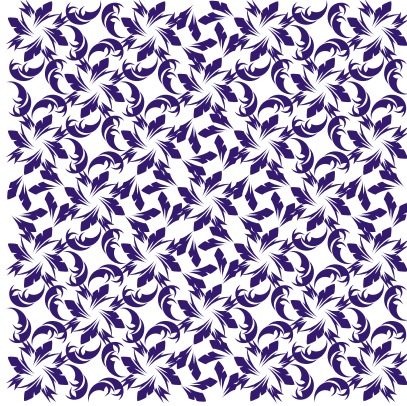
tTtTtT | TtTtTt | ...



uuu | ...



u



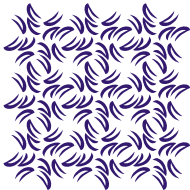
vPvV... | Pv... | vPvV... | Vv... | ...



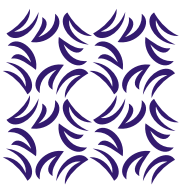
v



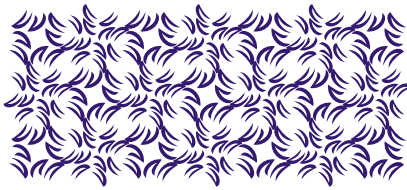
VvV | ...



www | ...



Ww | ...



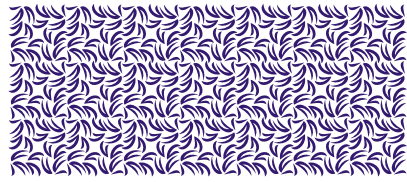
WwWwWwW | wWwWwWw | ...



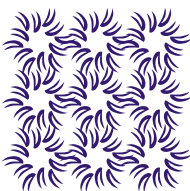
xxx | ...



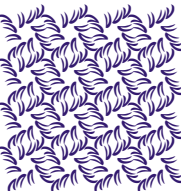
x



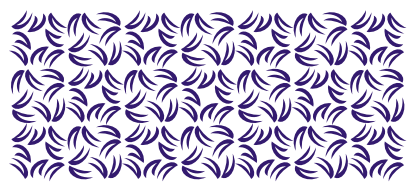
XXXXXXX | ...



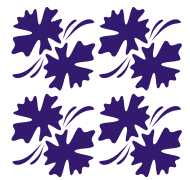
yyy | ...



YYYY | ...



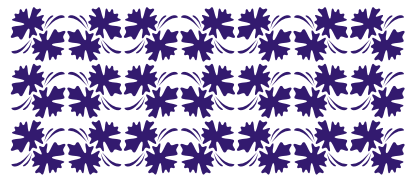
WxWxWxW | xWxWxWx | ...



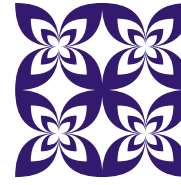
zz | ...



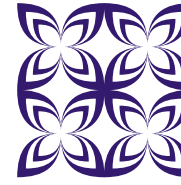
z



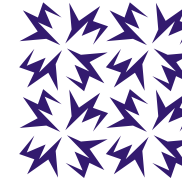
zLzLzLz | LzLzLzL | ...



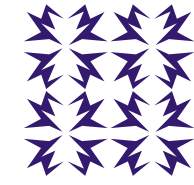
11 | ...



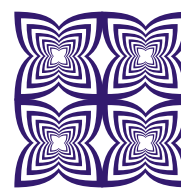
!! | ...



77 | ...



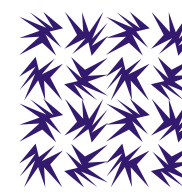
66 | ...



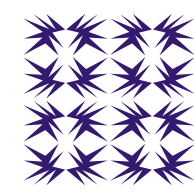
22 | ...



@



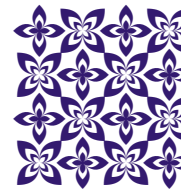
88 | ...



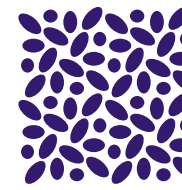
** | ...



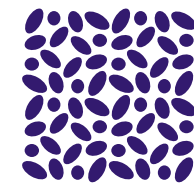
3@3 | @3@ | ...



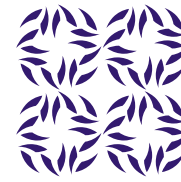
#1#1 | 1#1# | ...



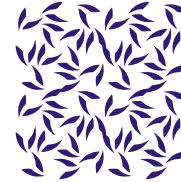
99 | ...



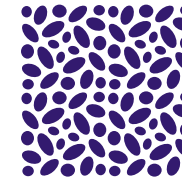
((| ...



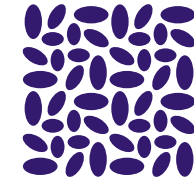
44 | ...



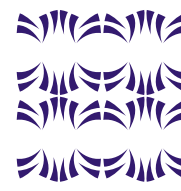
\$\$ | ...



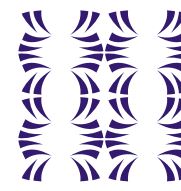
00 | ...



)) | ...



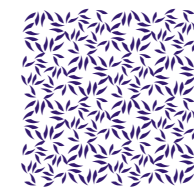
55 | ...



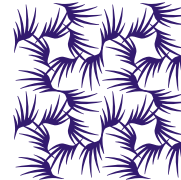
%% | ...



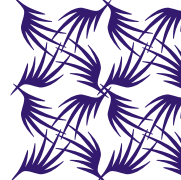
5%5% | %5%5 | ...



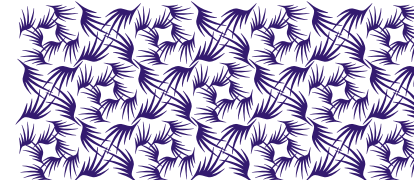
4\$4\$ | \$4\$4 | ...



66 | ...



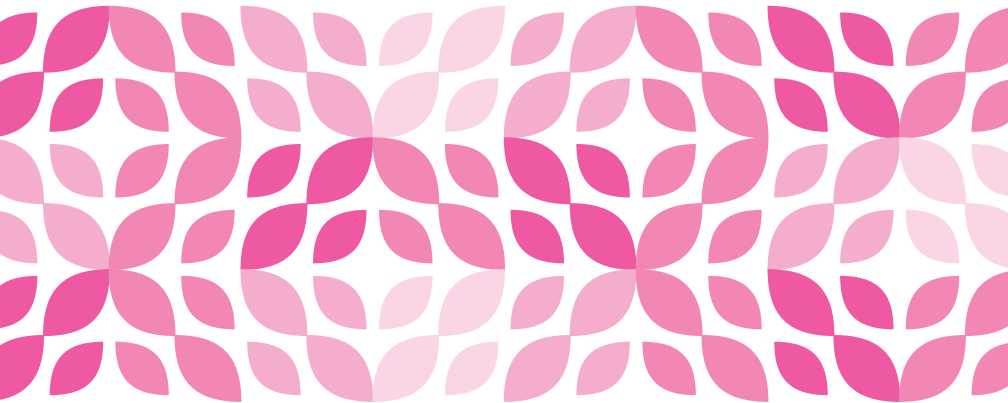
^^ | ...



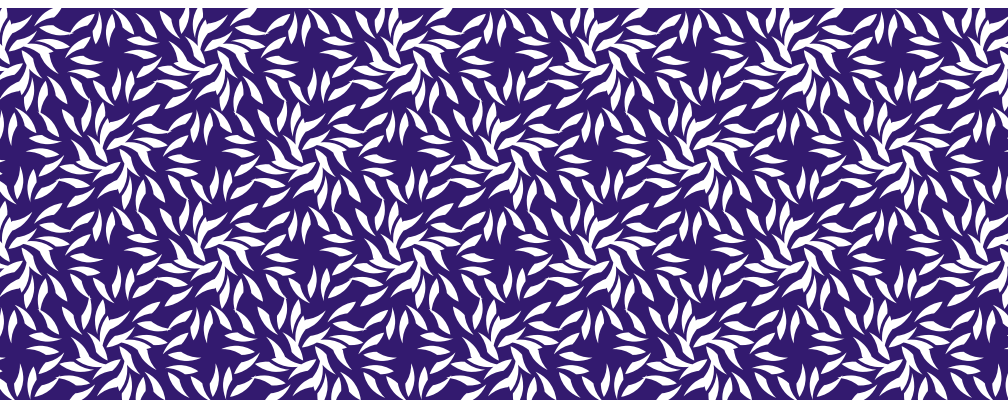
6^6^6^6 | ^6^6^6^ | ...



Front Layer: #!#!#!... | !#!#!#... | ... Back Layer: 131313... | 313131... | ...



bBBbBBb | bbbBBbB | bBBbBBb



141414... | 414141... | ...

Puzzler Font Package: \$95

Including Puzzler Halftone, Puzzler Geometric, and Puzzler Floral.

Puzzler Wrapping Papers: \$12

Set of six sheets; two sheets of three different designs, as shown on the cover. Please see our web site for the actual colors and full view of the designs: <http://www.emigre.com/Puzzler>

Each sheet is 22.25 X 31.5 inches, offset printed on uncoated stock.

Shipped as flat sheets folded down to 7.875 x 11.125 inches.

The paper is lightweight, opaque, and slightly off-white.

Emigre Magazine Back Issues

Many back issues remain available at the regular cover price or less.

Collectors' issues (available in very limited quantities) start at \$25.

Please visit our website for a full showing of available issues and prices.

Order On-line

www.emigre.com

Fonts are available for immediate download, all other items are shipped within five business days.

Order by Fax

Print out a faxable order form at: www.emigre.com/EFax.php

and fax to: (530) 756-1300

Order by Mail

Enclose payment by check or charge your credit card.

All checks must be payable through a US bank, in US dollars.

Mail to: Emigre, 1700 Shattuck Ave., #307, Berkeley, CA 94709, U.S.A.

Emigre News

Add yourself to the Emigre News emailing list. We use Emigre News to help keep you informed of new products, services, and special limited offers.

To sign up go to: www.emigre.com/enews

Emigre Type Catalog

To order a copy of the comprehensive Emigre Type Catalog go to:

www.emigre.com//EmigreCatalog.php

Mailing List

Help us keep our email and mailing lists up to date. You can change your address, or take yourself off our mailing list at:

www.emigre.com/work/acct_login.php

EMIGRE

1700 SHATTUCK AVE., #307
BERKELEY, CA 94709
U.S.A.

PRSRT STD
U.S. POSTAGE
PAID
DENVER, CO
PERMIT NO. 3280

CHANGE SERVICE REQUESTED

