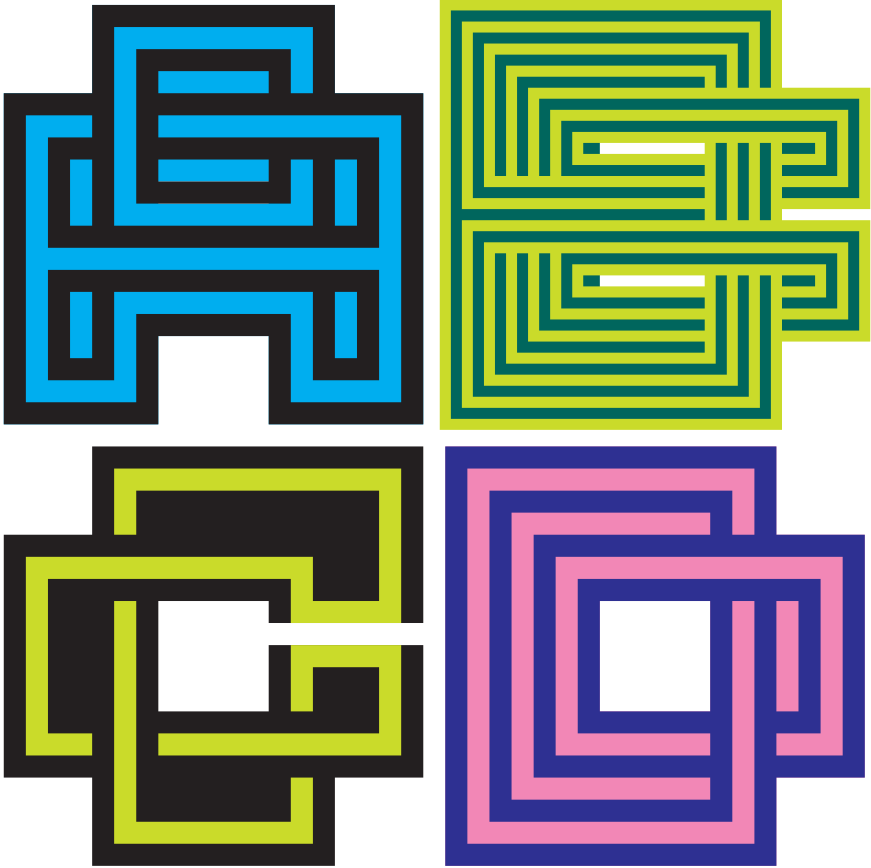


---

**LO-RES MONOSPACED**  
**DESIGNED BY ZUZANA LICKO**

---



---

**EMIGRE**

---

**LO-RES MONOSPACED**  
**LICENSED AND DISTRIBUTED BY EMIGRE**

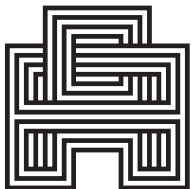
---



Solid



Woven Double



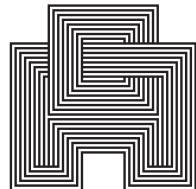
Woven Quadruple



Woven Single



Woven Double Reversed



Woven Octuple

---

**LO-RES MONOSPACED**  
**DESIGNED BY ZUZANA LICKO**

---

Designing a typeface is a process of staying on the straight and narrow. Each glyph in the alphabet wants to be unique, yet needs to fit in a larger system of hundreds of glyphs with similar characteristics in order to make a comprehensive font. However, the process of drawing, redrawing, editing and searching for solutions easily leads one to stray. Ideas for glyphs are sometimes stretched to a point where they no longer fit the original scheme, but may show potential for an entirely new direction. Most of these distractions lead to dead ends, but others, on rare occasions, can turn into ideas for new fonts.

Lo-Res Monospaced is such a typeface. While working on a much larger family of fonts named Lo-Res Outlined, which are years in the making, Licko stumbled upon the idea of making a mono spaced version. The idea was so energizing, she decided to shift focus and finish it before returning to her original designs. The result is close-knit family of six modular fonts.

This mono spaced design takes its playfulness into the world of patterns with its abstracted, woven letterforms. The characters fill up an M-square entirely, thereby allowing the letters, when set without line spacing, to create dense patterns filling a square grid. It should be obvious that this design is intentionally sacrificing legibility for being highly expressive. And we expect that users will apply the font accordingly.

Lo-Res Monospaced was an idea born from happenstance, and from being receptive to the alternatives that present themselves during the design process. On the following pages we show you examples of how to combine and layer the six versions of this typeface. You might enjoy the creative challenge to further define its utility and expand upon its possibilities.

---

**LO-RES MONOSPACED**  
**SOLID**

---

A B C D E F  
G H I J K L  
M N O P Q R  
S T U V W X  
Y Z [ \ ] ^ \_  
` a b c d e

---

**LO-RES MONOSPACED**  
**WOVEN SINGLE**

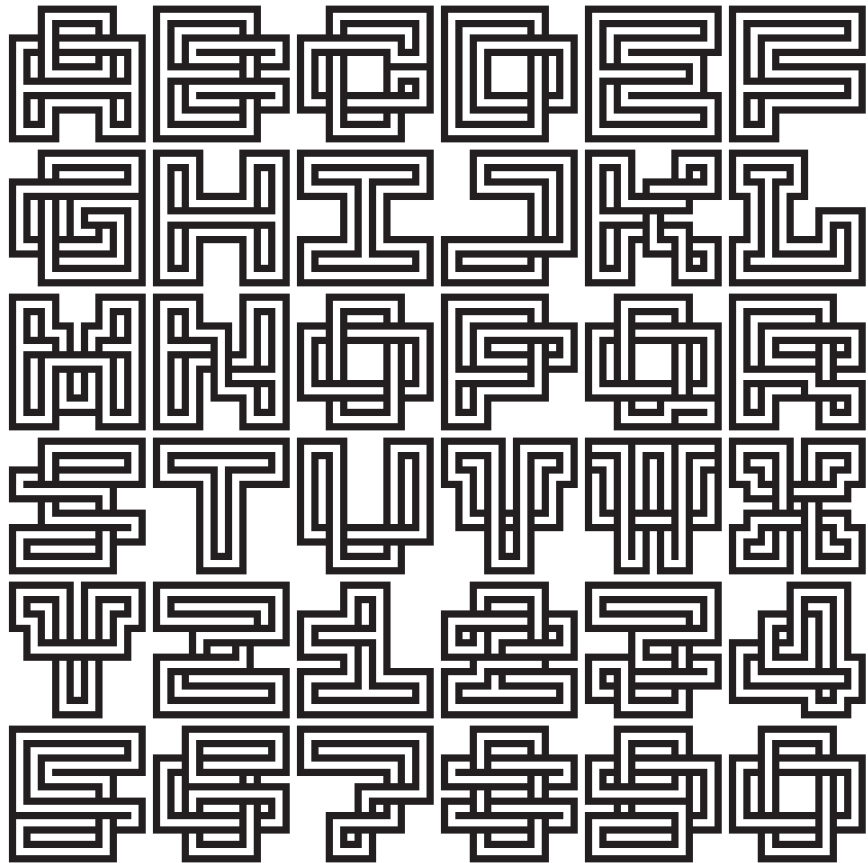
---

A B C D E F  
G H I J K L  
M N O P Q R  
S T U V W X  
Y Z [ \ ] ^ \_  
` a b c d e

---

**LO-RES MONOSPACED**  
**WOVEN DOUBLE**

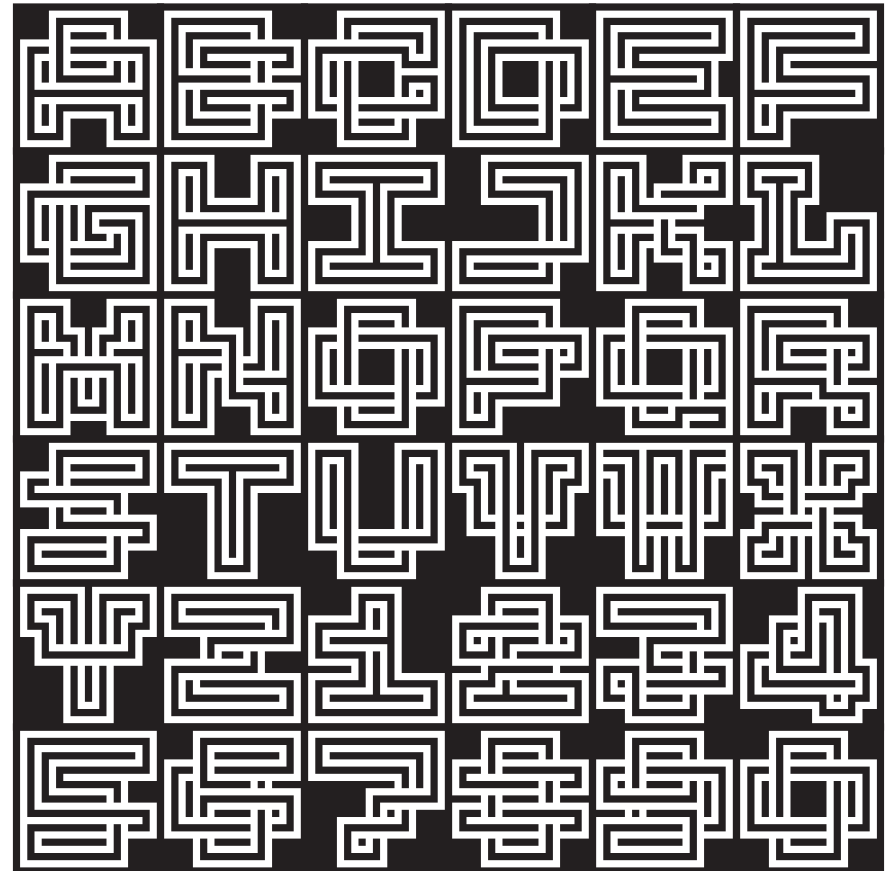
---



---

**LO-RES MONOSPACED**  
**WOVEN DOUBLE REVERSED**

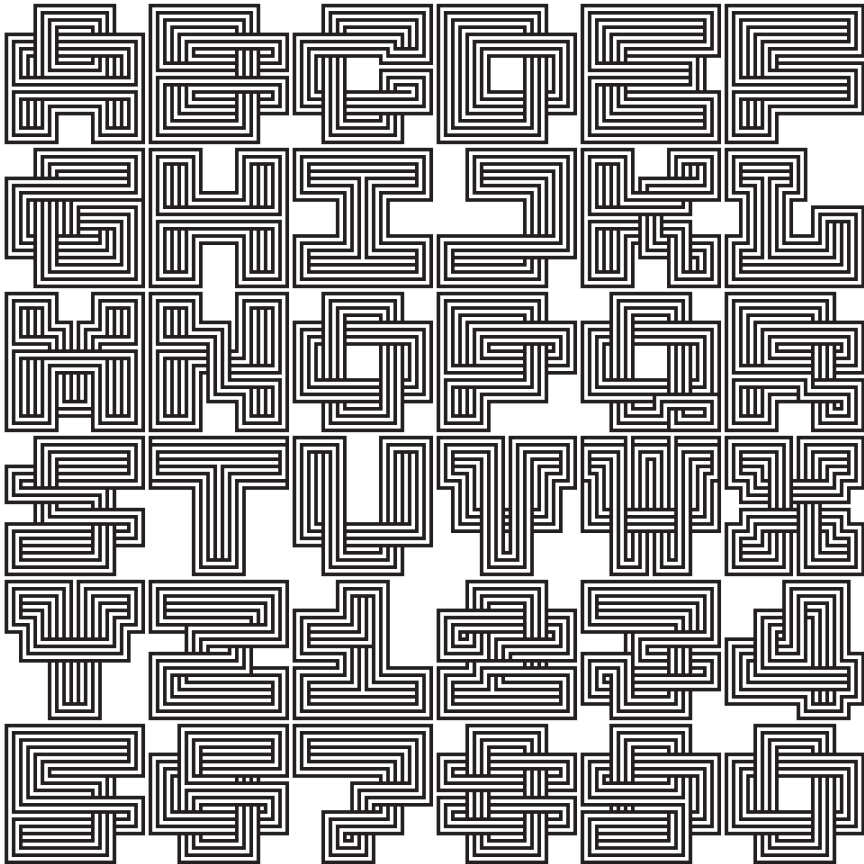
---



---

**LO-RES MONOSPACED**  
**WOVEN QUADRUPLE**

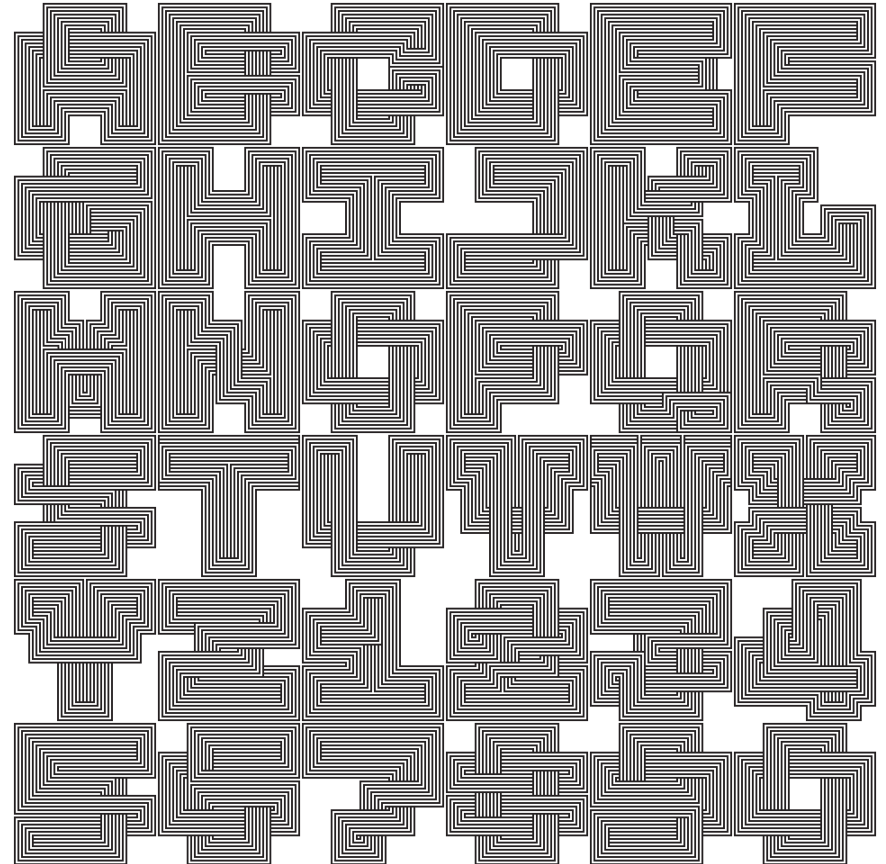
---



---

**LO-RES MONOSPACED**  
**WOVEN OCTUPLE**

---

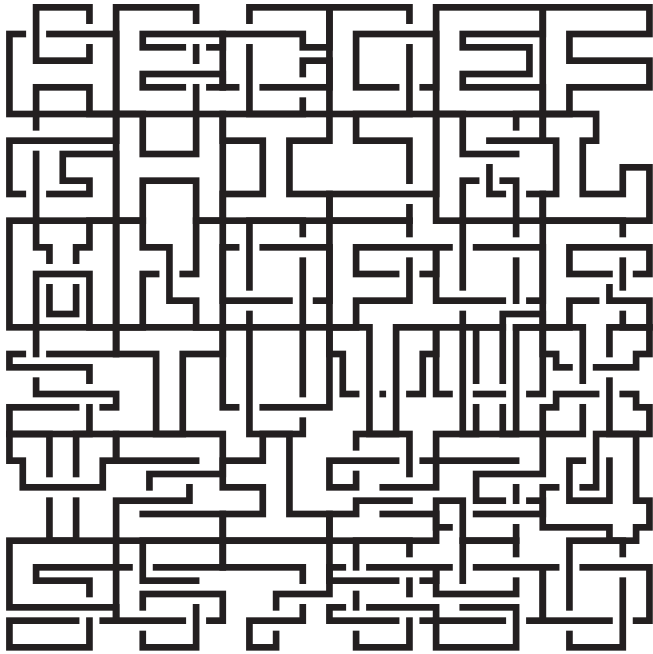


For a showing of the complete character sets of all Lo-Res Monospaced fonts, please go to:  
<https://www.emigre.com/Fonts/Lo-Res-Monospaced>

---

## LO-RES MONOSPACED ABSTRACTIONS

---

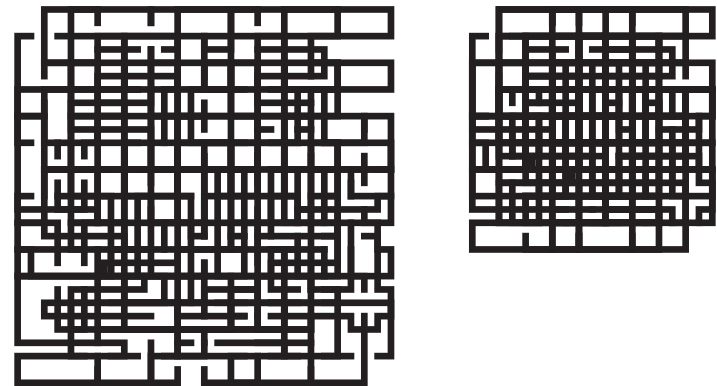
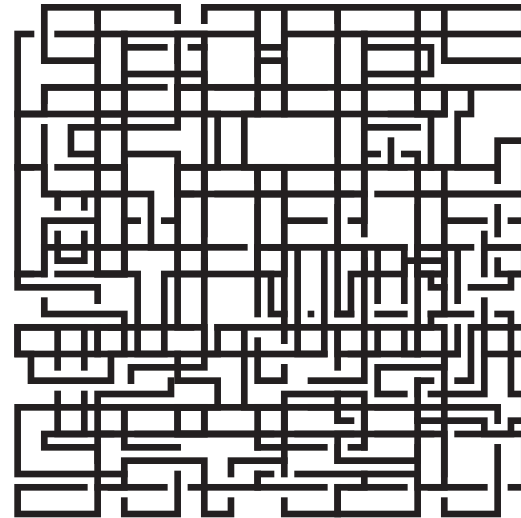


To delve further into abstraction, and/or have characters perfectly touch or overlap, reduce line spacing in 10% increments of the point size. For example, 100 point type can have leading set to 90, 80, 70, etc. This rule applies to all the Monospaced fonts. The four examples of the Woven Single font shown on these two pages are set at 50/40, 50/30, 50/20 and 50/10 respectively. To tighten horizontal alignment, set tracking in increments of -100 units.

---

## LO-RES MONOSPACED ABSTRACTIONS

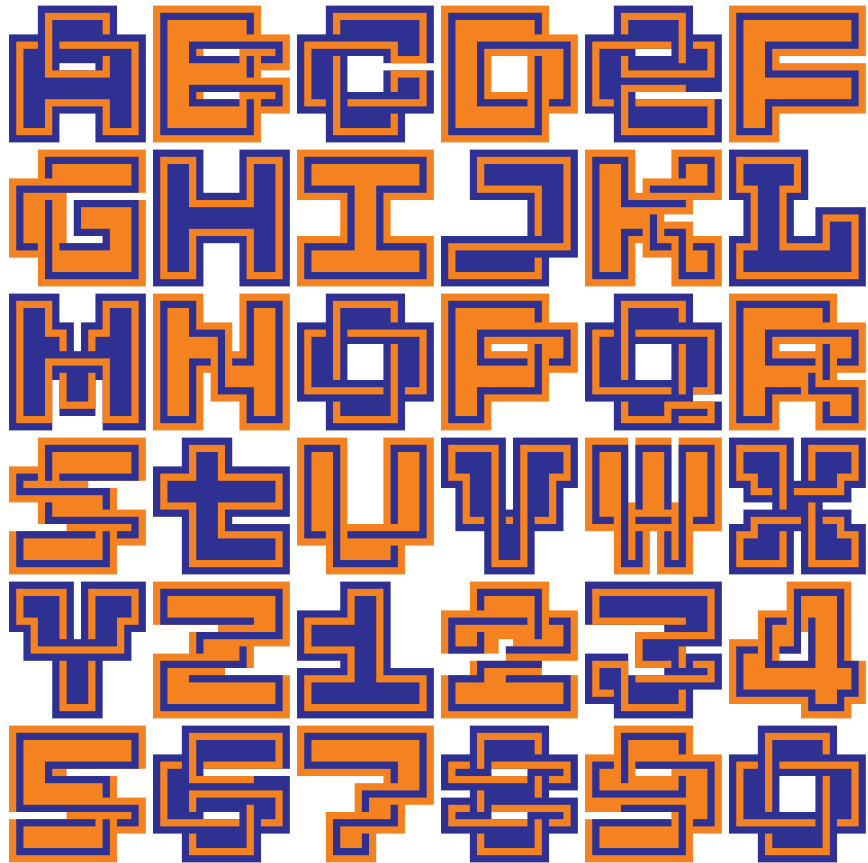
---



---

**LO-RES MONOSPACED**  
**WOVEN SINGLE | SOLID**

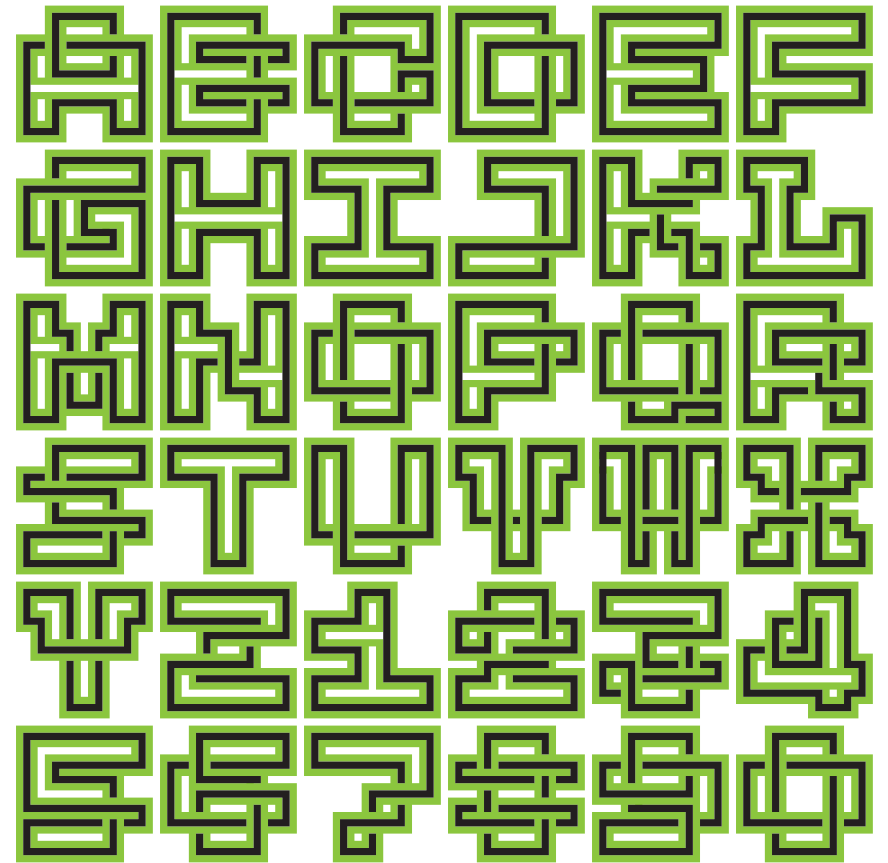
---



---

**LO-RES MONOSPACED**  
**WOVEN SINGLE | DOUBLE**

---

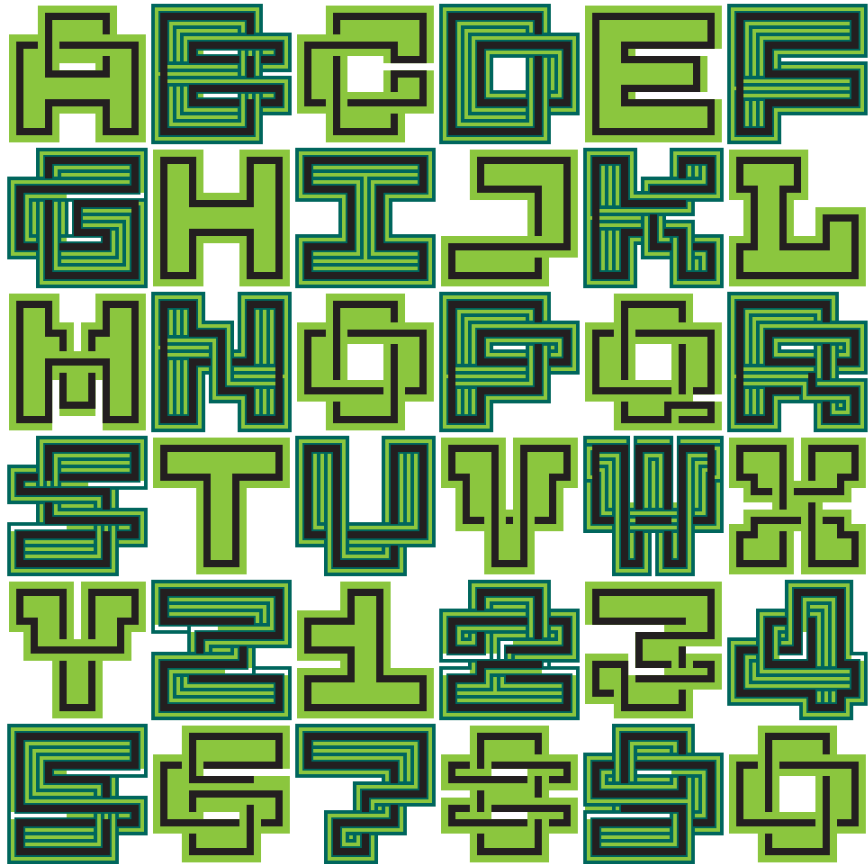


---

**LO-RES MONOSPACED**

**WOVEN SINGLE | QUADRUPLE | SOLID**

---



---

**EMIGRE**

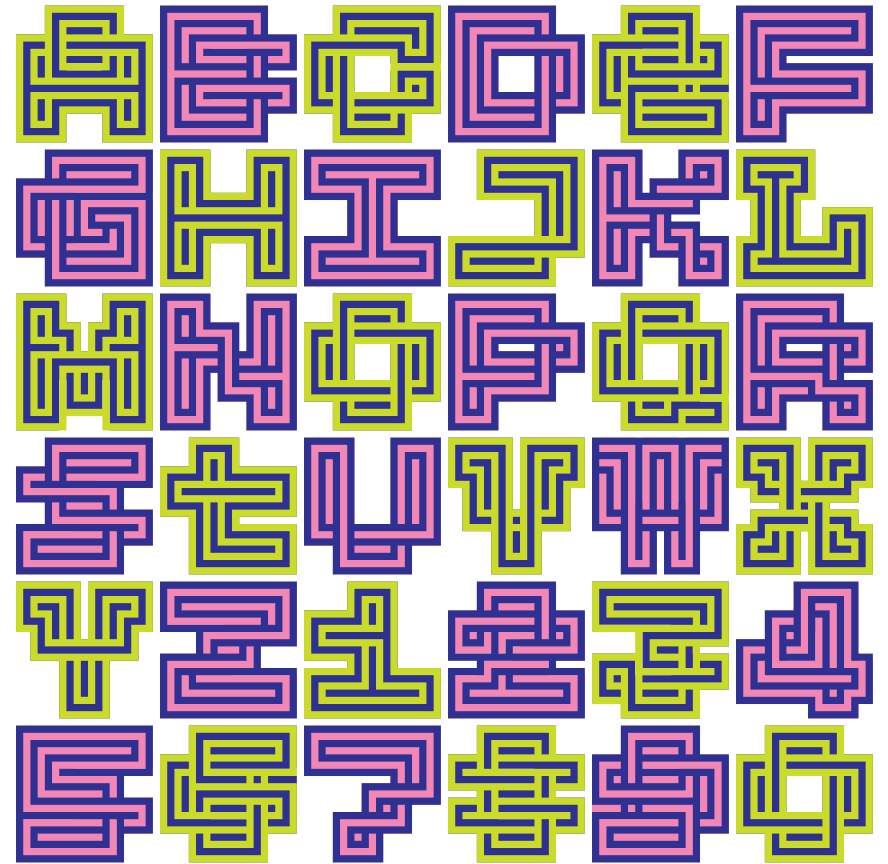
14

---

**LO-RES MONOSPACED**

**WOVEN DOUBLE | SOLID**

---



---

**EMIGRE**

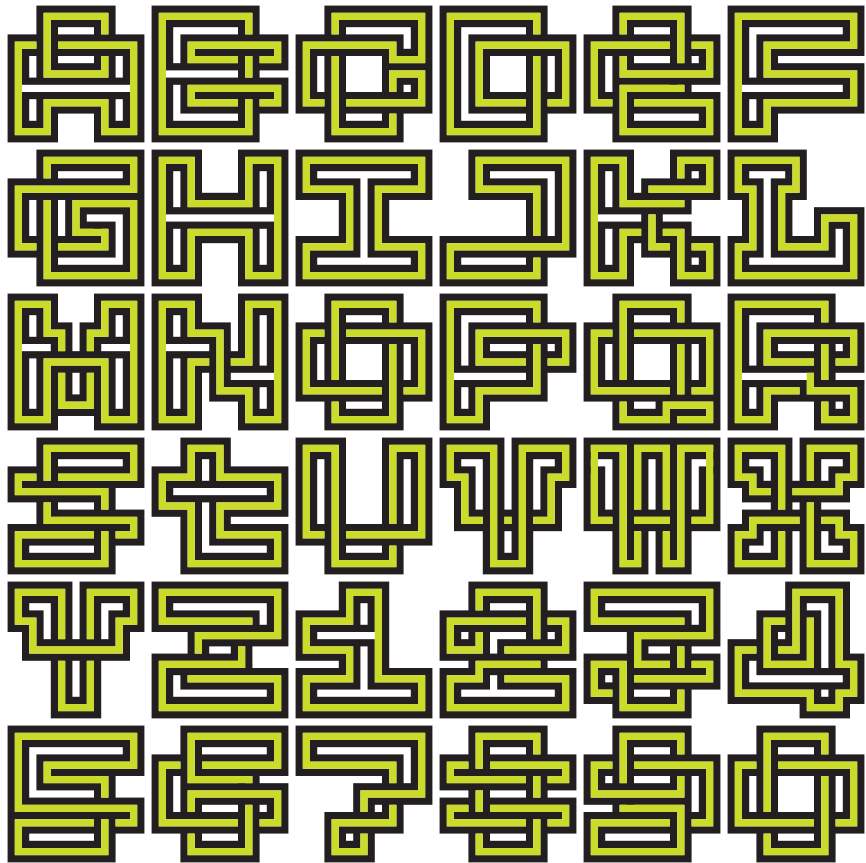
15



---

**LO-RES MONOSPACED**  
**WOVEN SINGLE | DOUBLE**

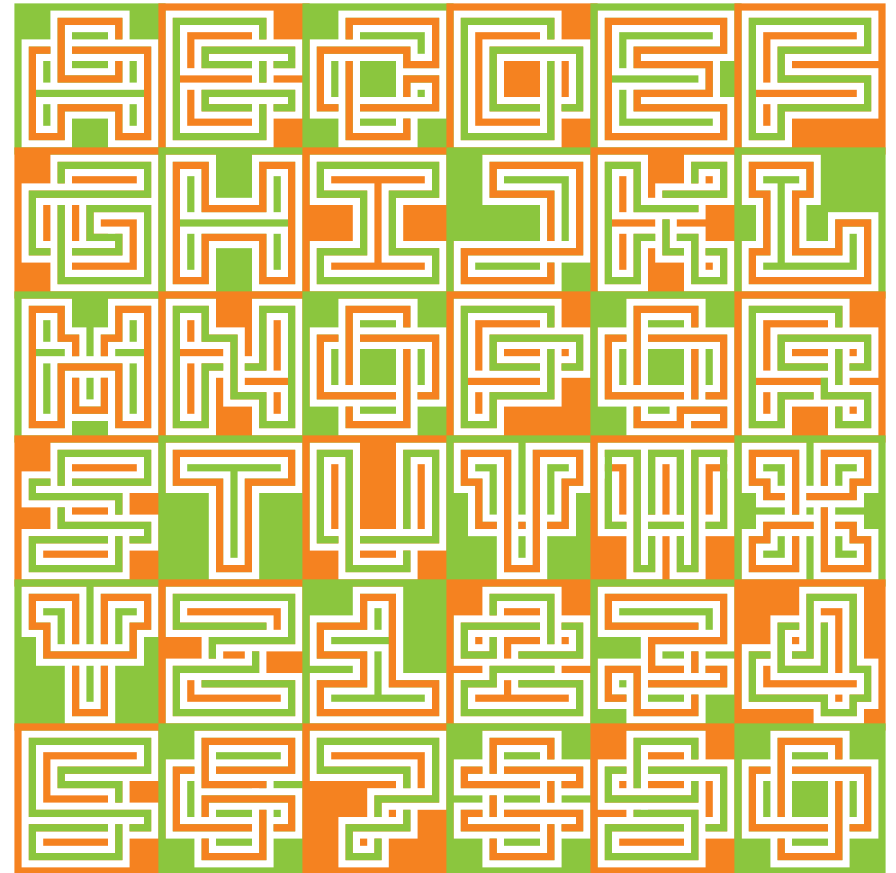
---



---

**LO-RES MONOSPACED**  
**WOVEN SINGLE | DOUBLE REVERSED**

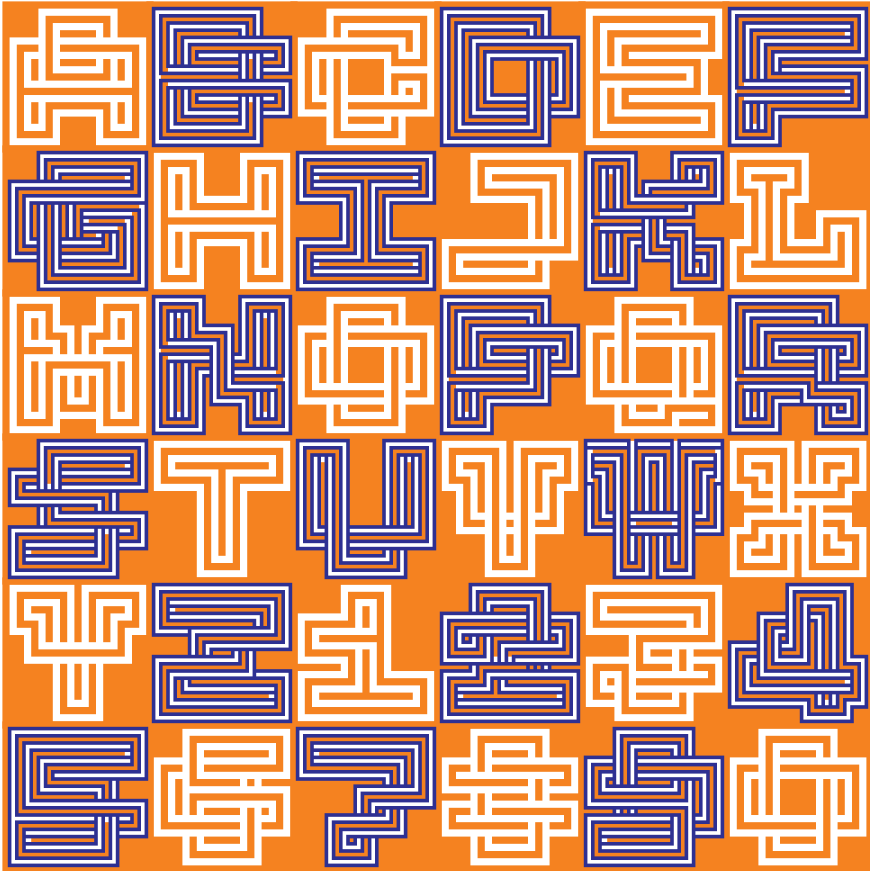
---



---

**LO-RES MONOSPACED**  
**WOVEN QUADRUPLE | DOUBLE REVERSED**

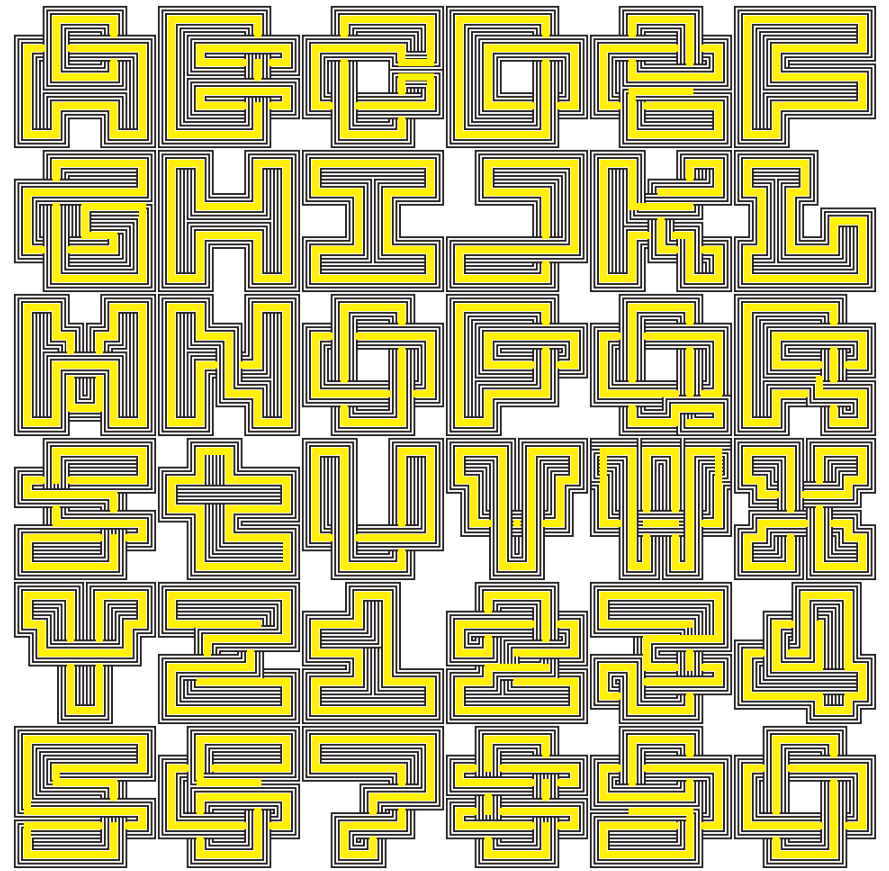
---



---

**LO-RES MONOSPACED**  
**WOVEN SINGLE | OCTUPLE**

---

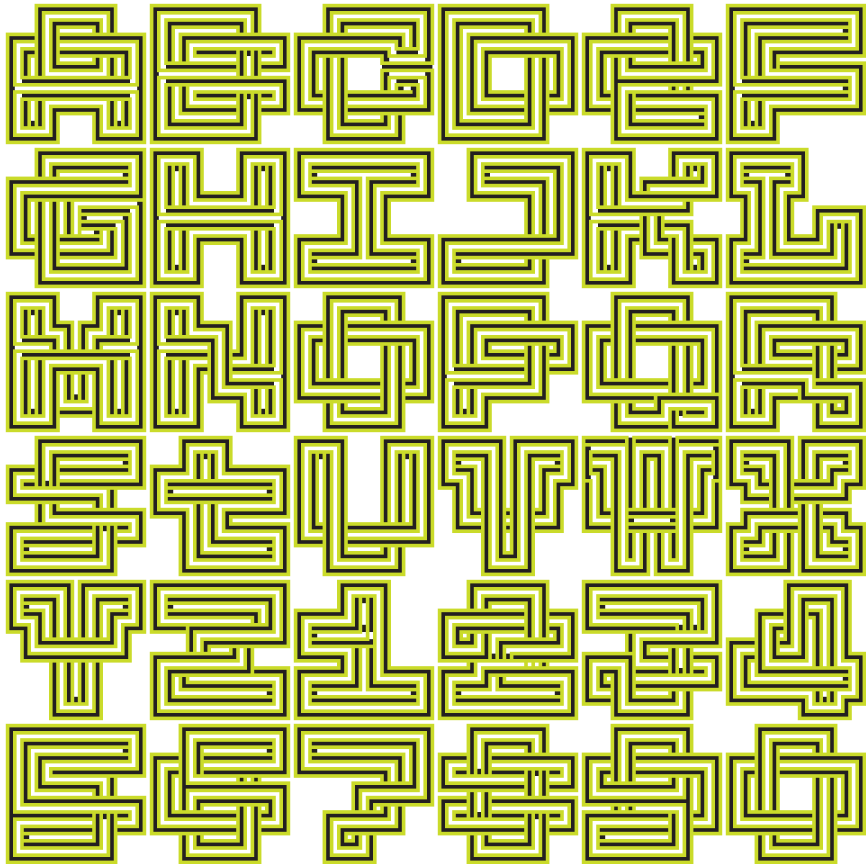


---

**LO-RES MONOSPACED**

**WOVEN QUADRUPLE | DOUBLE**

---



---

**EMIGRE**

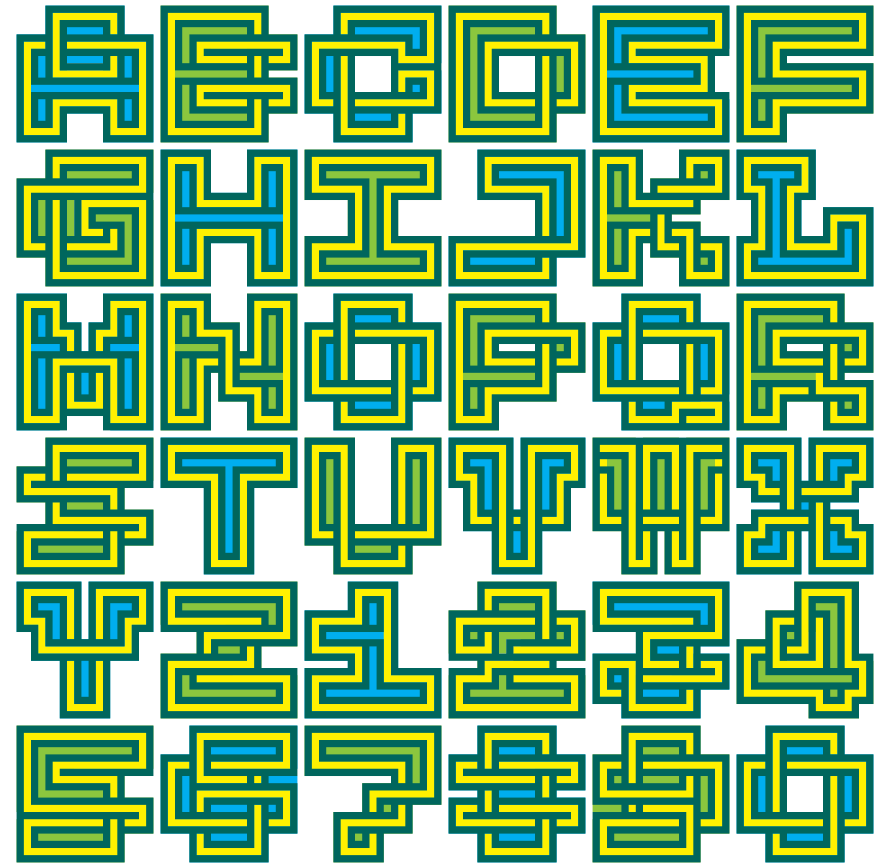
20

---

**LO-RES MONOSPACED**

**WOVEN DOUBLE | SINGLE | SOLID**

---



---

**EMIGRE**

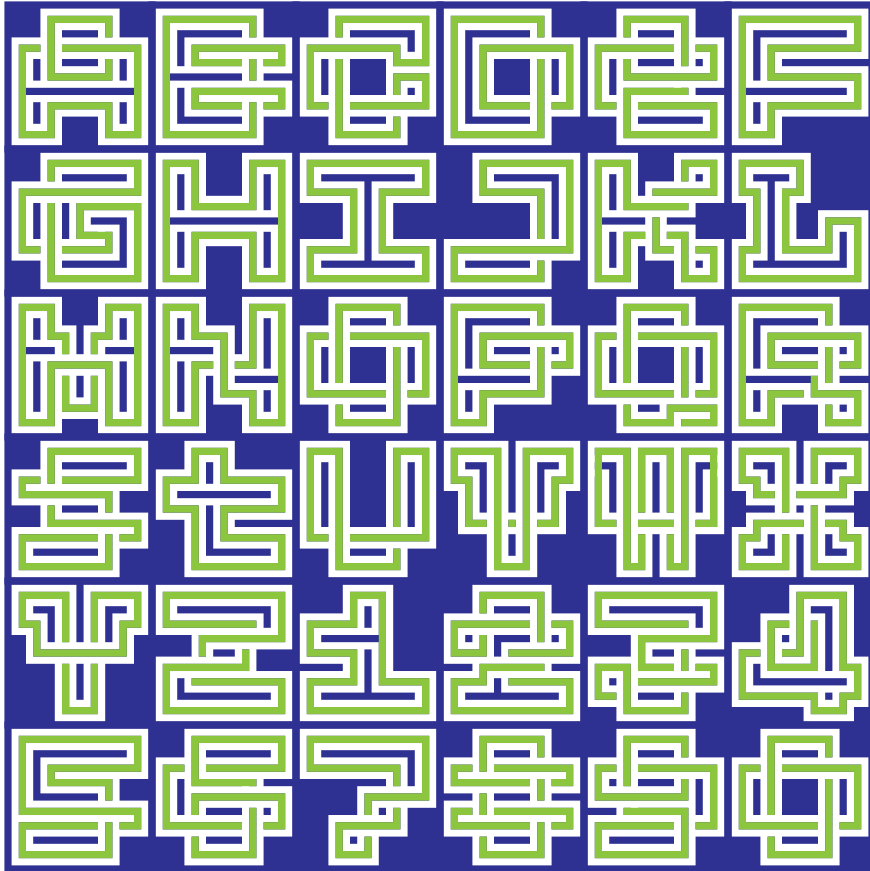
21

---

**LO-RES MONOSPACED**

**WOVEN SINGLE | DOUBLE REVERSED**

---

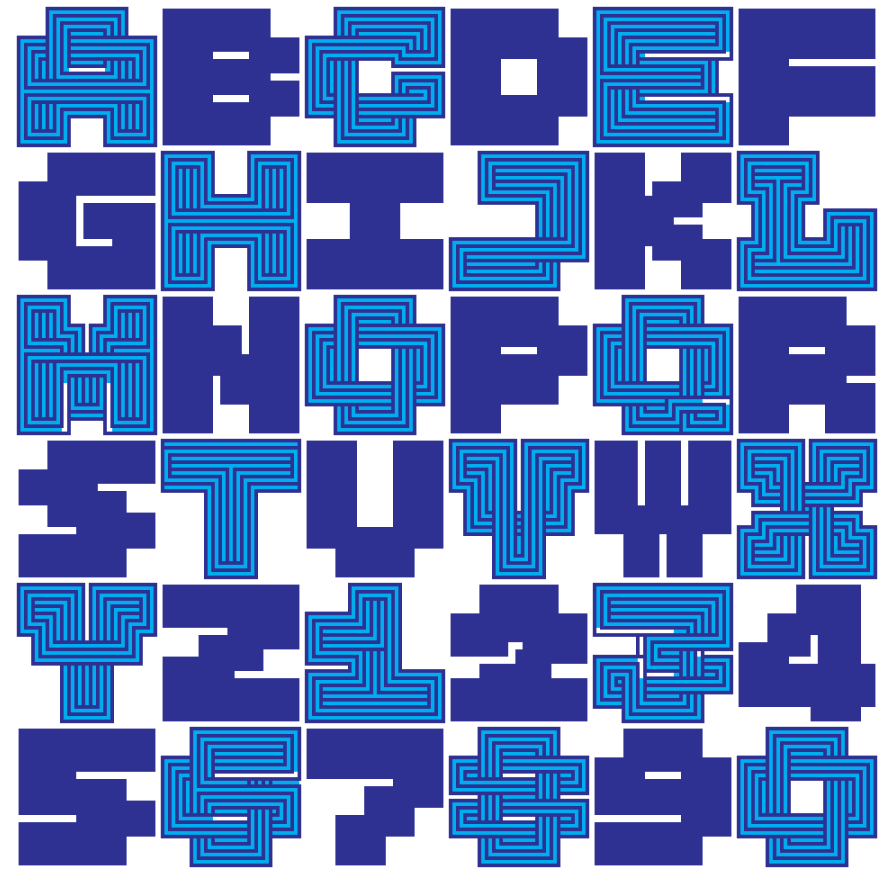


---

**LO-RES MONOSPACED**

**WOVEN QUADRUPLE | SOLID**

---

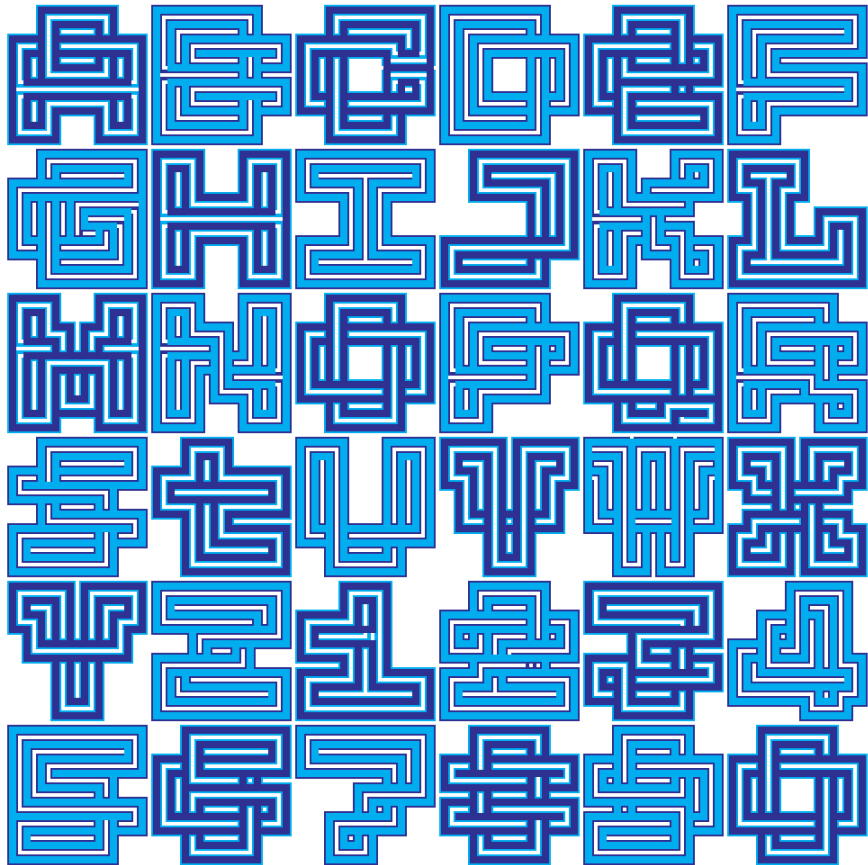


---

**LO-RES MONOSPACED**

**WOVEN DOUBLE | QUADRUPLE**

---

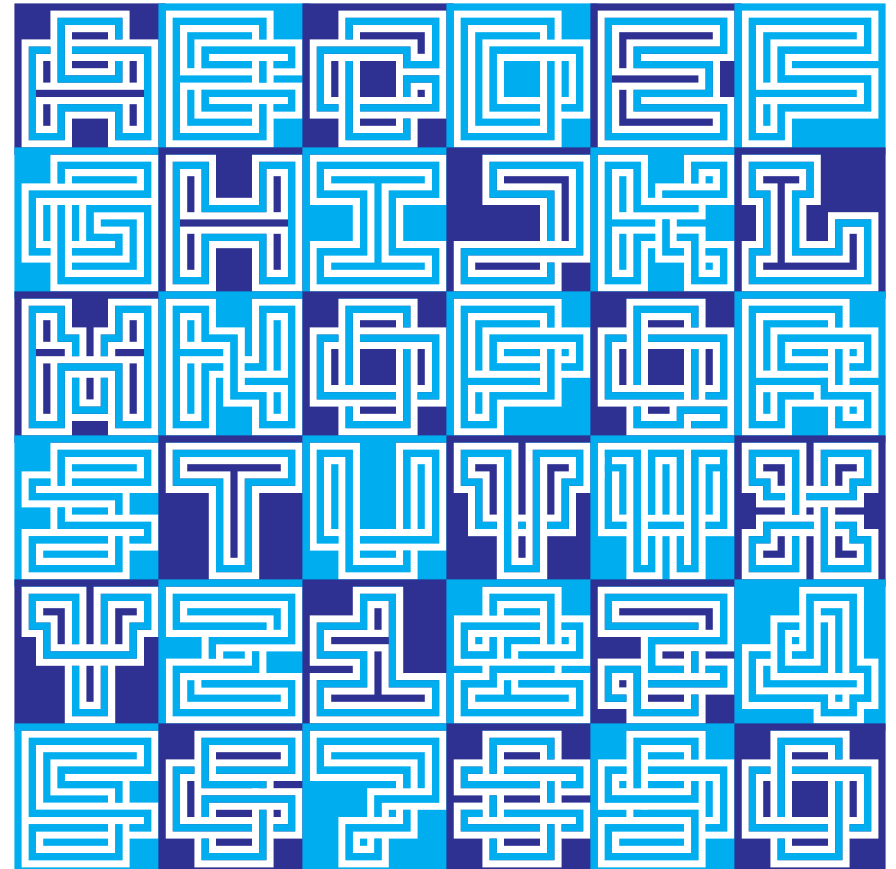


---

**LO-RES MONOSPACED**

**WOVEN SINGLE | DOUBLE REVERSED**

---



---

**LO-RES MONOSPACED**

**WOVEN DOUBLE | SINGLE | SOLID**

---



---

**EMIGRE**

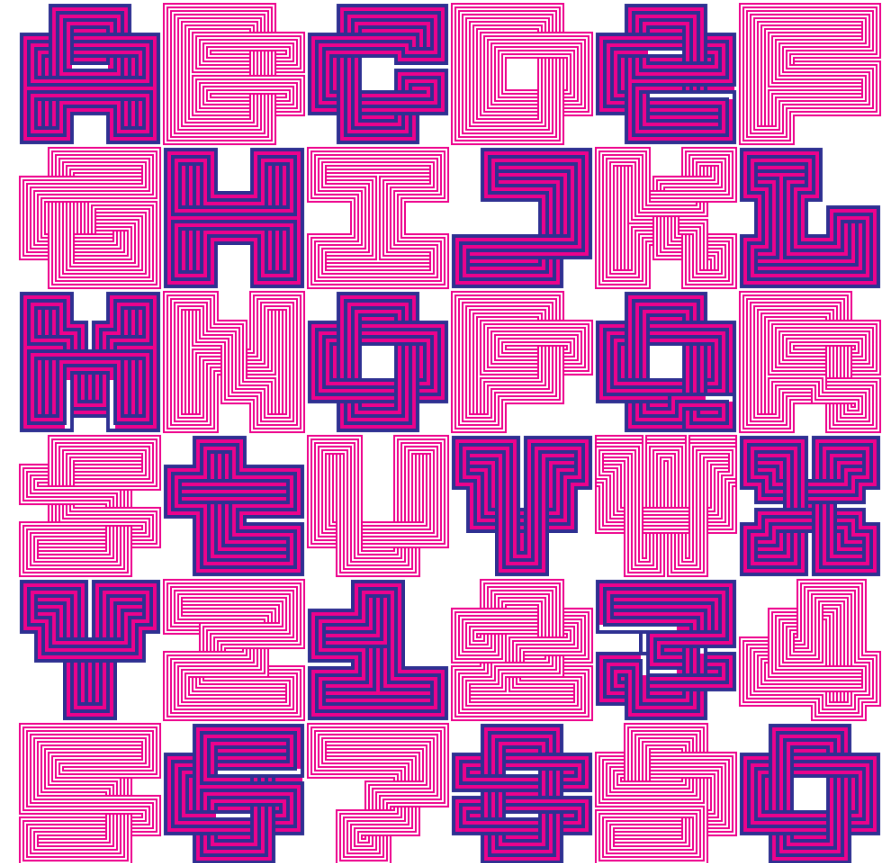
26

---

**LO-RES MONOSPACED**

**WOVEN QUADRUPLE | OCTUPLE | SOLID**

---



---

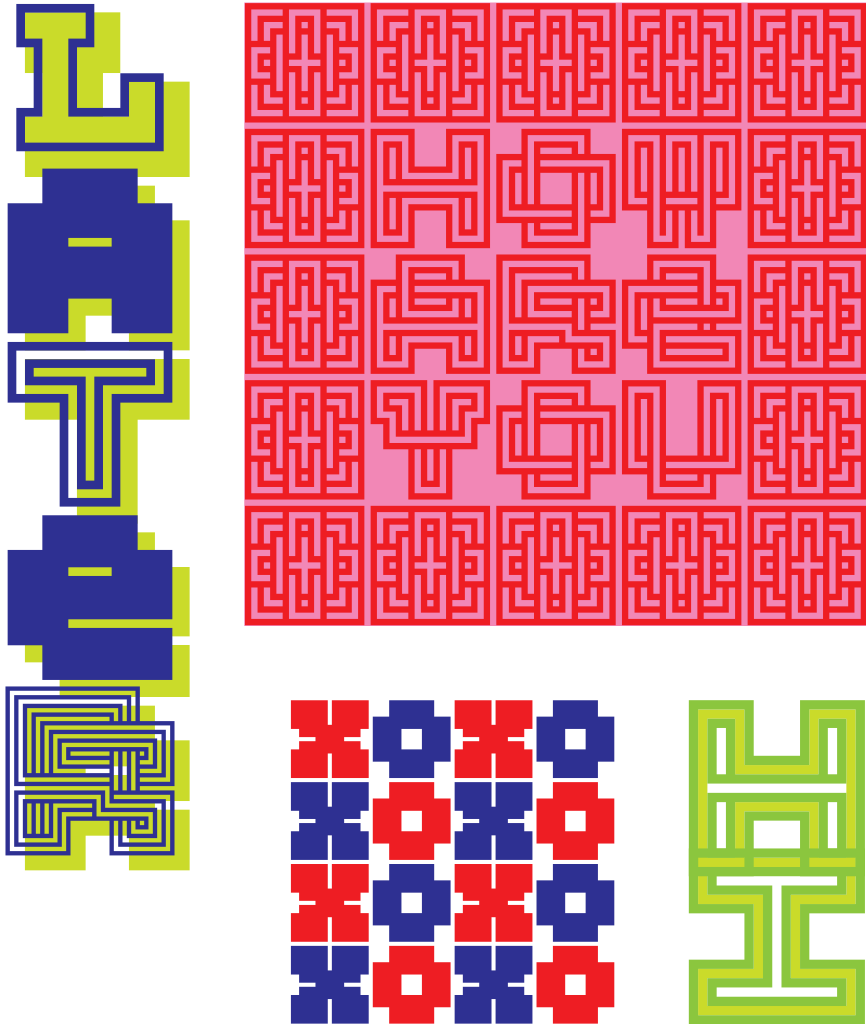
**EMIGRE**

27

---

**LO-RES MONOSPACED  
GALLERY**

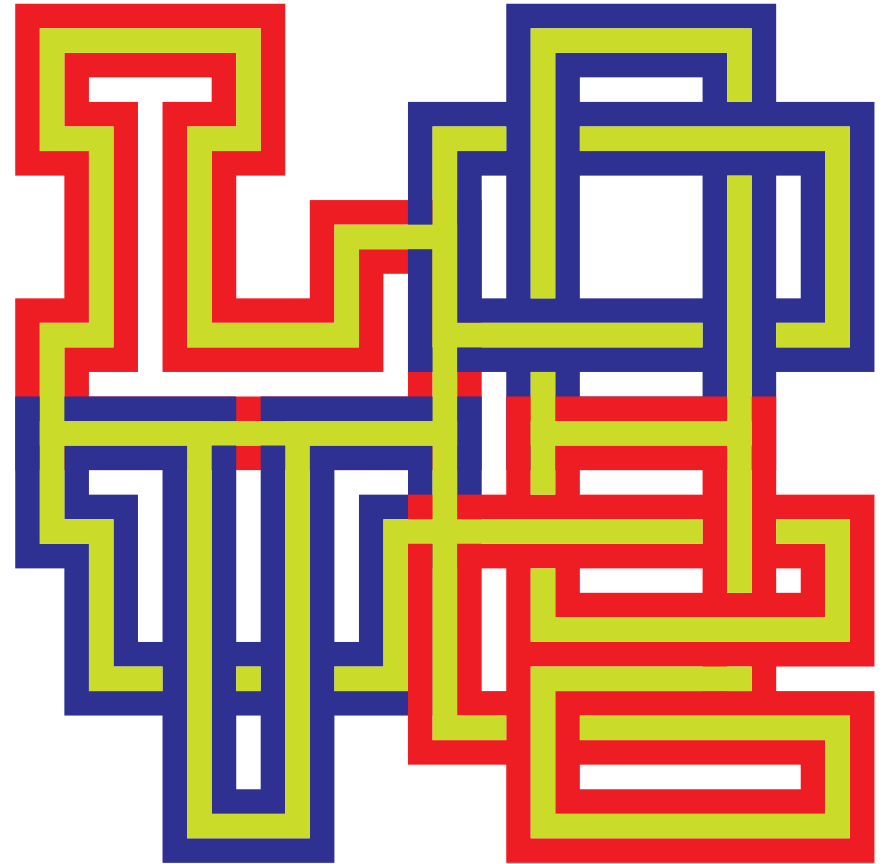
---



---

**LO-RES MONOSPACED  
GALLERY**

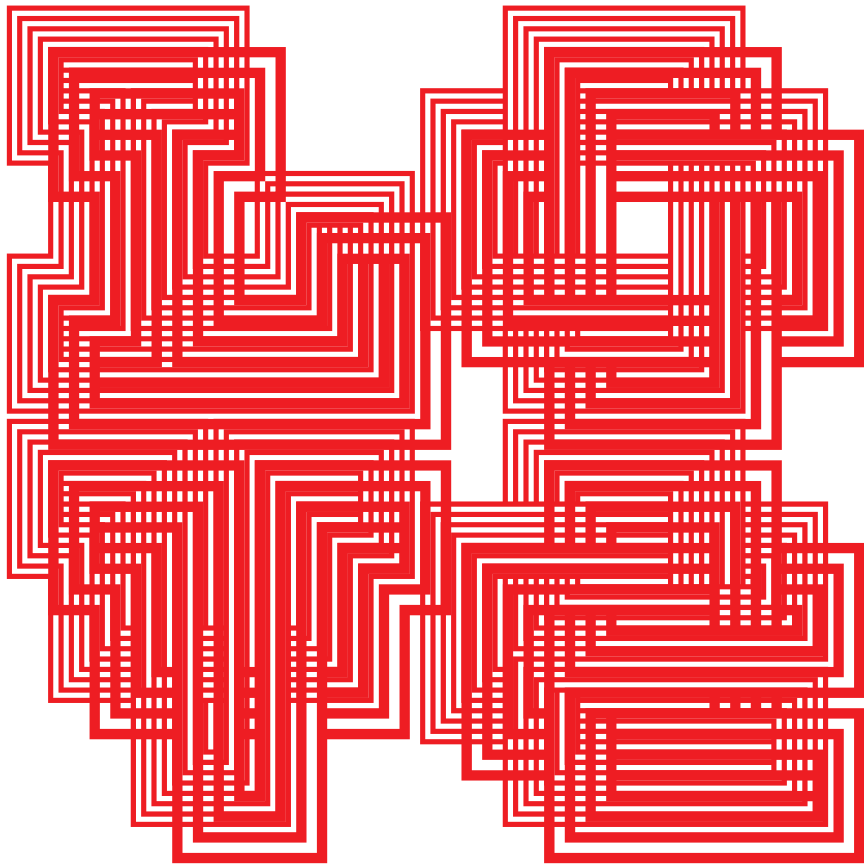
---



---

**LO-RES MONOSPACED  
GALLERY**

---



---

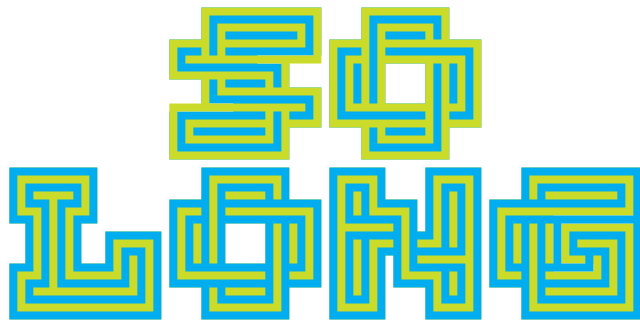
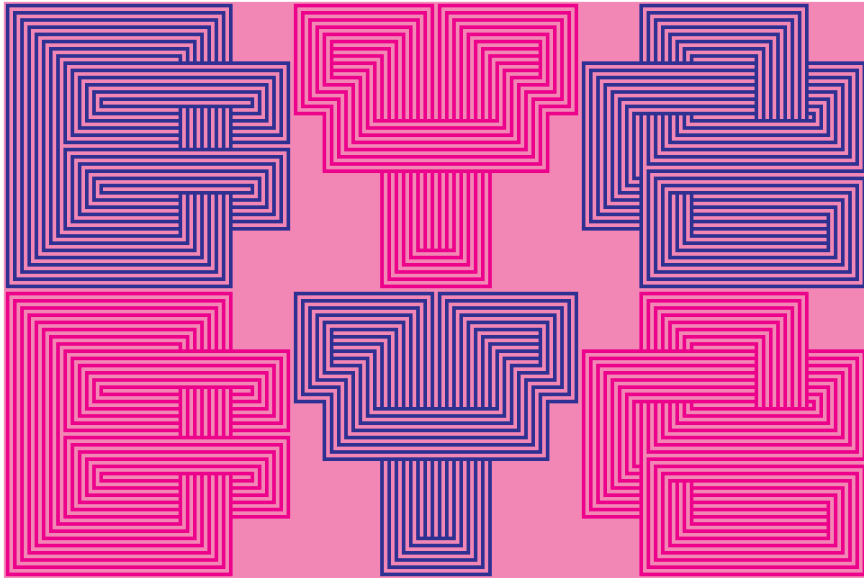
**LO-RES MONOSPACED  
GALLERY**

---





**LO-RES MONOSPACED  
GALLERY**

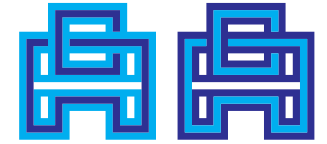


**LO-RES MONOSPACED  
OVERLAY COMBINATIONS KEY**



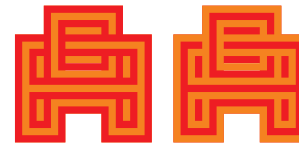
**SINGLE  
SOLID**

**SINGLE  
SOLID**



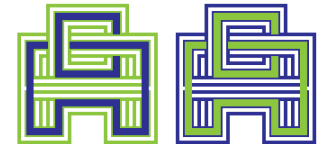
**SINGLE  
DOUBLE**

**SINGLE  
DOUBLE**



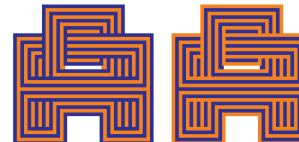
**DOUBLE  
SOLID**

**DOUBLE  
SOLID**



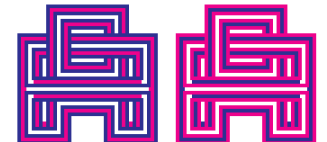
**SINGLE  
QUADRUPLE**

**SINGLE  
QUADRUPLE**



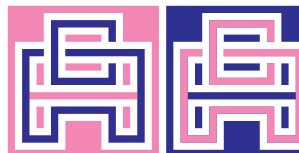
**QUADRUPLE  
SOLID**

**QUADRUPLE  
SOLID**



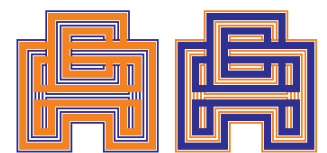
**QUADRUPLE  
DOUBLE**

**QUADRUPLE  
DOUBLE**



**SINGLE  
REVERSED**

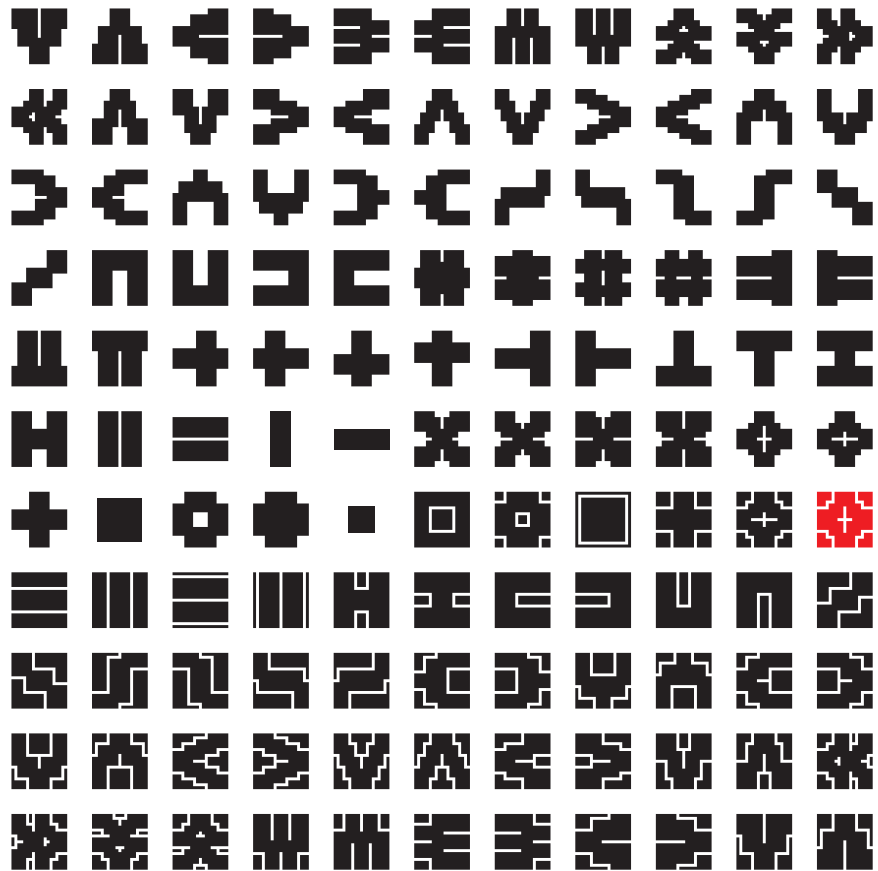
**SINGLE  
REVERSED**



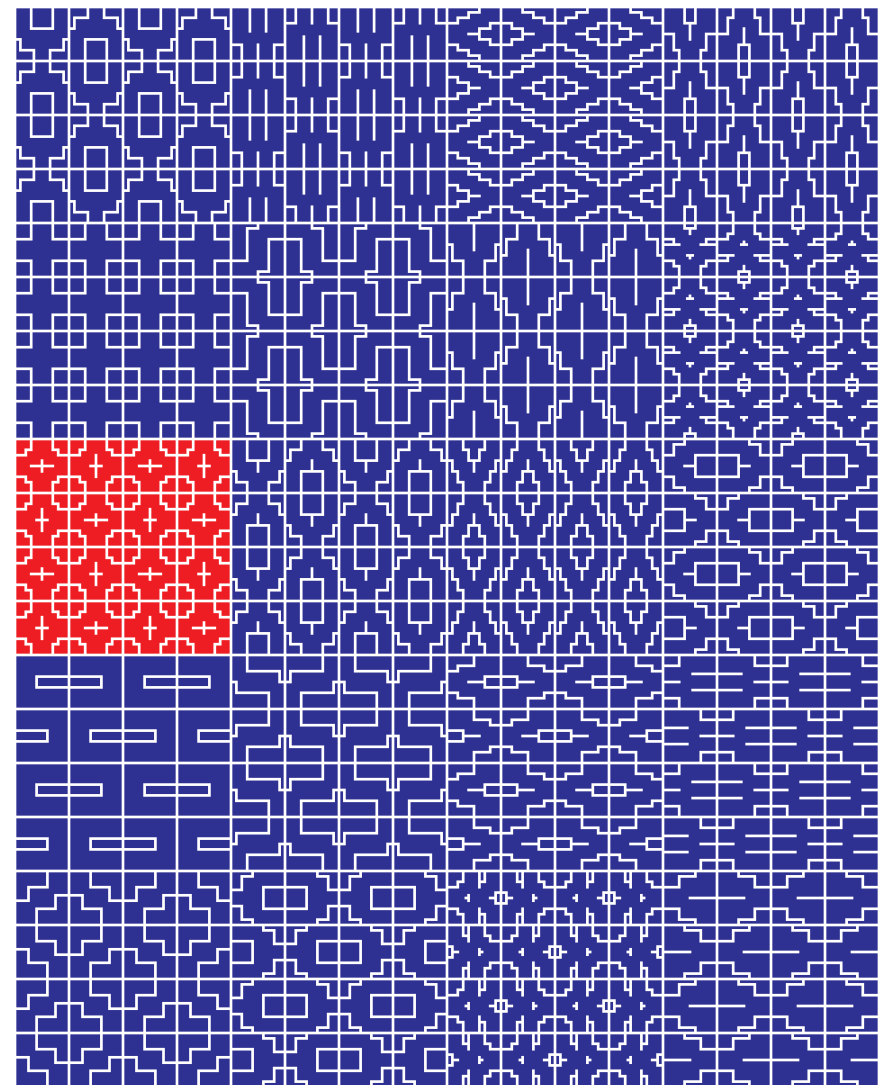
**DOUBLE  
OCTUPLE**

**DOUBLE  
OCTUPLE**

**LO-RES MONOSPACED  
PATTERN ELEMENTS**



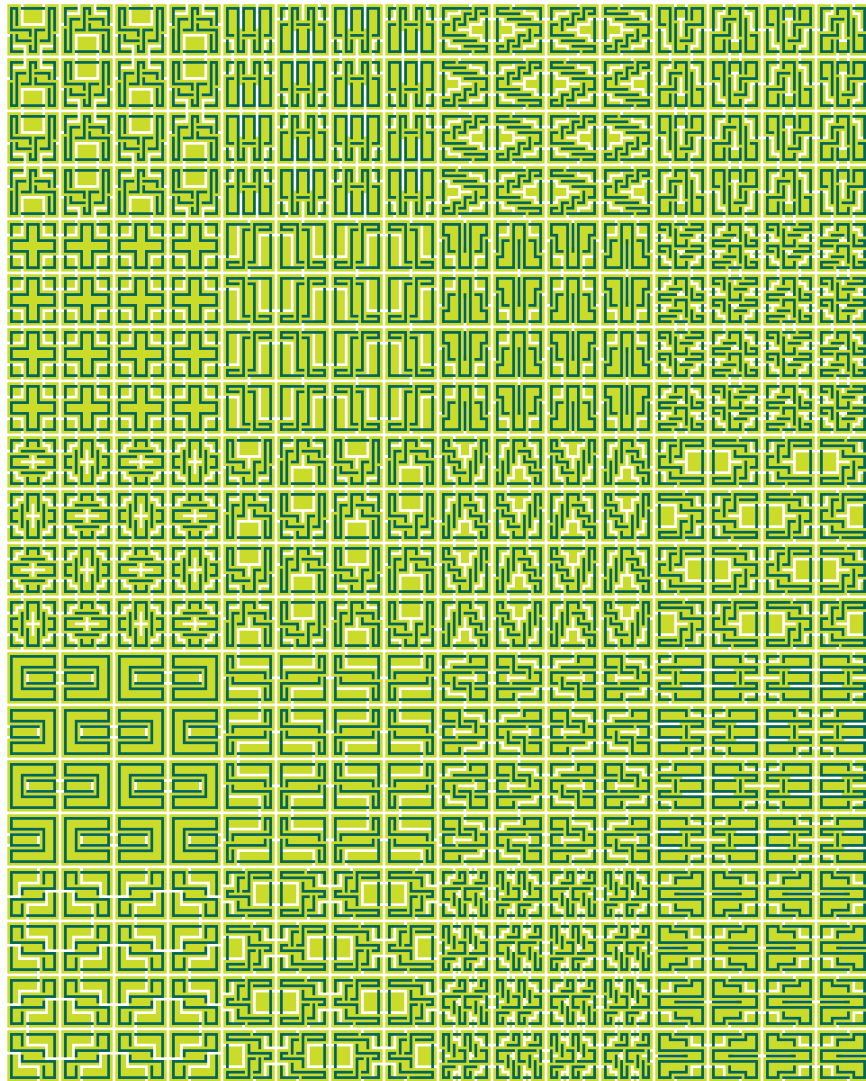
**LO-RES MONOSPACED  
PATTERN ELEMENTS | SOLID**



---

**LO-RES MONOSPACED**  
**PATTERN ELEMENTS | WOVEN SINGLE | SOLID**

---



---

**WWW.EMIGRE.COM**

---

**EMIGRE TYPE CATALOGS**

To receive the latest Emigre type specimens by mail for free go to:

[emigre.com/TypeSpecimens](http://emigre.com/TypeSpecimens)

Printed copies of Emigre's past type specimens are available for sale, and for free as downloadable PDF files at: [emigre.com/TypeSpecimens](http://emigre.com/TypeSpecimens)

**EMIGRE MAGAZINE**

Browse all pages of the full run of *Emigre* magazine in high resolution at Letterform Archive: [oa.letterformarchive.org](http://oa.letterformarchive.org)

Issues No. 64 - 69 are available for free as downloadable PDF files at:

[emigre.com/Magazine/PDF](http://emigre.com/Magazine/PDF)

**EMIGRE APP**

View and read all pages of the entire collection of Emigre Fonts type specimens, and all issues of *Emigre* magazine, in this easy-to-use app made for graphic designers and type aficionados alike. Download for free from the Apple Store at: [emigre.com/App](http://emigre.com/App)



**MAILING LIST**

Help us keep our email and mailing lists up to date. You can change your email address, or take yourself off our mailing list at: [emigre.com/MyAccount](http://emigre.com/MyAccount)

Emigre  
1700 Shattuck Ave., #307  
Berkeley, CA 94709  
U.S.A.  
[info@emigre.com](mailto:info@emigre.com)



