



LITTLE BOOK OF LOVE LETTERS

EMIGRE TYPE CATALOG

SELECTIONS FROM VOLUME I & II

TEXTS BY DAVID BARRINGER



EMIGRE FONTS & DESIGNERS

Arbitrary	Barry Deck	52
Backspacer	Nancy Mazzei & Brian Kelly	52
Base	Zuzana Licko	52
Base Monospace	Zuzana Licko	52
Big Cheese	Eric Donelan & Bob Aufuldish	52
Blockhead	John Hersey	52
Brothers	John Downer	53
Cholla	Sibylle Hagmann	53
Citizen	Zuzana Licko	53
Council	John Downer	53
Dalliance	Frank Heine	8 & 53
Dead History	Scott Makela	54
Democratica	Miles Newlyn	54
Dogma	Zuzana Licko	54
Eidetic Neo	Rodrigo Cavazos	54
Elektrix	Zuzana Licko	54
Elliott's Fonts	Elliott Earls	54
Exocet	Jonathan Barnbrook	55
Fairplex	Zuzana Licko	55
Fellaparts	Edward Fella	55
Filosofia	Zuzana Licko	12 & 55
Hypnopaedia	Zuzana Licko	55
Journal	Zuzana Licko	55
Keedy Sans	Mr. Keedy	56
Lo-Res	Zuzana Licko	56
Los Feliz	Christian Schwartz	56
Lunatix	Zuzana Licko	56
Malaga	Xavier Dupré	56
Mason	Jonathan Barnbrook	57
Matrix	Zuzana Licko	57
Missionary	Miles Newlyn	58

Typefaces shown on cover: Missionary and Fairplex Wide Black Italic.

EMIGRE FONTS & DESIGNERS

Modula	Zuzana Licko	58
Motion	Frank Heine	58
Mrs Eaves	Zuzana Licko	18 & 58
Narly	Zuzana Licko	58
Not Caslon	Mark Andresen	59
Oblong	Rudy VanderLans & Zuzana Licko	59
Ottomat	Claudio Piccinini	59
Outwest	Edward Fella	59
Platelet	Conor Mangat	59
Poppi	Martin Friedl	59
Priori	Jonathan Barnbrook	24 & 59
Puzzler	Zuzana Licko	59
Remedy	Frank Heine	60
Sabbath Black	Miles Newlyn	60
Senator	Zuzana Licko	60
Soda	Zuzana Licko	60
Solex	Zuzana Licko	34 & 60
Suburban	Rudy VanderLans	60
Tall Pack	Zuzana Licko	60
Tarzana	Zuzana Licko	40 & 60
Template Gothic	Barry Deck	61
Thingbat	John Hersey	61
Totally Gothic	Zuzana Licko	61
Tribute	Frank Heine	61
Triplex	Zuzana Licko	46 & 61
Triplex Italic	John Downer	46 & 61
Variex	Rudy VanderLans & Zuzana Licko	61
Vendetta	John Downer	62
Vista	Xavier Dupré	62
Whirligig	Zuzana Licko	62
Zeitguys	Eric Donelan & Bob Aufuldish	62

FONT LICENSING

Emigre licenses its fonts directly from the designers who create them. We ask you to help us support type designers by acquiring proper licenses for the use of these fonts.

Basic License

For font users with up to five CPUs at one location.

Each Emigre Font purchase is automatically licensed for use at one location with a maximum of five CPUs.

Multi-CPU License Upgrade

For font users with more than five CPUs at one location.

The price of a Multi-CPU License depends on the number of CPUs to be used at each location. Use our online calculator to estimate your licensing costs:
www.emigre.com/ELFormula.php

Site License - Unlimited CPUs at a Single Site

For large companies with many employees at one location.

The Site License allows the installation and use of the fonts on an unlimited number of CPUs at one physical address of a corporation or other legal entity.

World-Wide License

For large companies with many locations.

The World-Wide License allows the installation and use of the fonts at an unlimited number of locations of one corporation or other legal entity, limited to the number of CPUs.

Service Bureau License

For any font user who sends fonts off-site for output.

The Service Bureau License is a supplement to the Basic License and permits the user to supply the font software to a printer or service bureau for imaging.

Questions About Licensing?

We are more than happy to answer any of your questions, and can provide licenses for a single site, one-person studio, all the way to a corporate world-wide license. Contact Emigre at: licensing@emigre.com or call (530) 756-2900.

TECHNICAL SPECS

Classic Formats

Emigre Fonts are available in Macintosh PostScript, Macintosh TrueType, and PC formats for use with Macintosh, Windows, and UNIX platforms. PostScript Type 1 fonts have long been the industry standard format for graphic design. To properly display on screen, PostScript Type 1 fonts require Adobe Type Manager (ATM) with Classic, OS9 and earlier, and Windows 98, NT and earlier.

OpenType Format

Emigre's top selling type families are now also available in OpenType format. This format incorporates typographic features such as small caps, ligatures, old style numerals and lining numerals, all within one font file, thereby simplifying font management and usage. OpenType font files are also cross-platform compatible; they work on both Macintosh and Windows platforms.

Do note that accessing OpenType typographic features requires an application which supports OpenType such as recent versions of Adobe InDesign, Adobe Photoshop, Adobe Illustrator, or QuarkExpress.

Registered customers may upgrade classic format fonts to the OpenType format for 50% of the OpenType price. To order an upgrade, please contact sales@emigre.com

GREEK, CYRILLIC, CE & TURKISH EMIGRE FONTS

In collaboration with Cannibal Fonts in Greece and ParaType in Russia, Emigre has developed both Greek and Cyrillic versions of some of its most popular typefaces.

Five of Emigre's top selling type families are now also available in OpenType CE format, with support for Turkish and Central European languages.

See our website for availability and additional info.

TYPETEASE

Typet ease is an on-line typesetting tool that allows you to type in words or full sentences and view them in any Emigre font. This way, you can quickly see how a particular word looks when set in a certain font. It is also possible to set a word or sentence in multiple fonts simultaneously in order to compare their look and feel. Check it out at: typet ease.emigre.com.

CHARACTER SETS

Standard Character Set (Classic Formats)

Most Emigre fonts contain the following standard characters:

A B C D E F G H I J K L M N O P Q R S T U V W X Y Z
a b c d e f g h i j k l m n o p q r s t u v w x y z
0 1 2 3 4 5 6 7 8 9
Ä Å Â Ã Ä Å Ç È É Ê Ë Ì Í Î Ï Ñ
Ö Ö Ó Ô Õ Ø Ú Û Ü Ý
á à â ã ä å ç è é ê ë ì í î ï ñ ó ò ô õ ö ø ú û ü ý ì
Æ Œ æ œ fi fl ß
! ; ? ¿ & , . : ; • „ , “ ” ‘ ’ ’ ’
[] { } () / | \ « » < > < > + = - - - ~
\$ ¢ £ ¥ f € ° * # ® © ™ ª º ¶ † ‡ § @ % ‰

Small Caps Character Set (Classic Formats)

Most Emigre small caps fonts contain the following standard characters:

A B C D E F G H I J K L M N O P Q R S T U V W X Y Z
A B C D E F G H I J K L M N O P Q R S T U V W X Y Z
0 1 2 3 4 5 6 7 8 9
Ä Å Â Ã Ä Å Ç È É Ê Ë Ì Í Î Ï Ñ
Ö Ö Ó Ô Õ Ø Ú Û Ü Ý
Á À Â Ã Ä Å Ç È É Ê Ë Ì Í Î Ï Ñ Ó Ò Ô Õ Ö Ø Ú Û Ü Ý Þ
Æ Œ Æ Œ FI FL SS
! ; ? ¿ & , . : ; • „ , “ ” ‘ ’ ’ ’
[] { } () / | \ « » < > < > + = - - - ~
\$ ¢ £ ¥ f € ° * # ® © ™ ª º ¶ † ‡ § @ % ‰

Fractions Character Set (Classic Formats)

Most Emigre fractions fonts contain the following characters:

© ® ¢ ¤ ¶ § ¨ © ª « ¬ ® ¯ ° ± ² ³ ´ µ ¶ · ¸ ¹ º » ¼ ½ ¾
a b d e h i l m n o r s t (Ordinals)
¼ ½ ¾ ⅛ ⅜ ⅝ ⅞ ⅓ ⅔ (Fractions)
0 1 2 3 4 5 6 7 8 9 / 0 1 2 3 4 5 6 7 8 9 (Superior and inferior numerals)
ff fi fl ffi ffl (F-ligatures)
0 1 2 3 4 5 6 7 8 9 (Tabular numerals)

CHARACTER SETS

OpenType Character Set

Most Emigre OpenType fonts contain the following standard characters:

A B C D E F G H I J K L M N O P Q R S T U V W X Y Z
a b c d e f g h i j k l m n o p q r s t u v w x y z
0 1 2 3 4 5 6 7 8 9
Ä Å Â Ã Ä Å Ç È É Ê Ë Ì Í Î Ï Ñ
Ö Ö Ó Ô Õ Ø Ú Û Ü Ý
á à â ã ä å ç è é ê ë ì í î ï ñ ó ò ô õ ö ø ú û ü ý ì
Æ Œ æ œ fi fl ß
! ; ? ¿ & , . : ; • „ , “ ” ‘ ’ ’ ’
[] { } () / | \ « » < > < > + = - - - ~
\$ ¢ £ ¥ f € ° * # ® © ™ ª º ¶ † ‡ § @ % ‰

In addition some Emigre OpenType fonts may contain the following features;
accessing these requires an application which supports typographic features such
as Adobe InDesign 2 or Adobe Photoshop 6:

A B C D E F G H I J K L M N O P Q R S T U V W X Y Z Á À Â Ã Ä Å Ç È
È Ê Ë Ì Í Î Ï Ñ Ó Ô Õ Ö Ø Ú Û Ü Ý Þ Æ Œ \$ ¢ £ ¥ f € ° * # ® © ™
ª º ¶ † ‡ § @ % ‰ (Small caps)
ff fi fl ffi ffl fy gí py fb gy ì î (Ligatures)
a b d e h i l m n o r s t (Ordinals)
0 1 2 3 4 5 6 7 8 9 (Old style numerals)
0 1 2 3 4 5 6 7 8 9 (Lining numerals)
0 1 2 3 4 5 6 7 8 9 (Tabular numerals)
0 1 2 3 4 5 6 7 8 9 0 1 2 3 4 5 6 7 8 9 (Superior and inferior numerals)
0 1 2 3 4 5 6 7 8 9 / 0 1 2 3 4 5 6 7 8 9 (Numerator and denominator numerals)
¼ ½ ¾ ⅛ ⅜ ⅝ ⅞ ⅓ ⅔ (Fractions [arbitrary])
↔ ↵ ↶ ↷ ↸ ↹ ↺ ↻ ↼ ↽ ↾ ↿ (Ornaments)

Some Emigre OpenType fonts may also contain additional features such as petite
caps and alternate letter forms.

DALLIANCE

ABCDEF G abcdefg

1. ROMAN

sk et sh ek ffi si ei

2. ROMAN LIGATURES

ABCD ABCD 1/4 1/2 3/4

3. ROMAN SMALL CAPS & FRACTIONS

NUMERALS:
LINING

\$65.00

DALLIANCE

ABCDEF G abcdef

1. SCRIPT

sk il si et sp ffi j

2. SCRIPT LIGATURES

ABCDEF G abcdef

3. SCRIPT DISPLAY

1/4 1/2 3/4 1/8 3/8 7/8 1000

4. SCRIPT FRACTIONS

NUMERALS:
LINING

\$65.00

8 FONT VOLUME

INCLUDES ALL 8 DALLIANCE FONTS.

\$139.00 | SAVE \$30

DALLIANCE OPENTYPE

INCLUDES ALL DALLIANCE FONTS,
PLUS ADDITIONAL FEATURES.

\$180.00

Dalliance was designed in 2000 by Frank Heine. It is based on the handwriting on an antique map of a battle that had taken place at Ostrach in southwest Germany in 1799.

The OpenType version was released in 2006.

ABCDEF GHI
JKLMNOPQRS
TUVWXYZ
abcdefghijklmnop
nopqrstuvwxyz
0123456789

! ? @ # % & *

DALLIANCE ROMAN 24 POINT

D

DALLIANCE SCRIPT 160 POINT

abcdefghijklmnop

DALLIANCE ROMAN 58 POINT

Dear Dalliance,

I TEAR UP YOUR LETTER! *To Shreds!* I close my eyes and let my tears fall because what can I do? Your lover surprised us, and you needed to hide me. *To hide me!* Ashamed! You shoved me off a cliff. I read your hateful letter as if it is a shred of clothing I'd torn from your body. How can you let me go? I will die! You will let me die! Better for you to kill me than admit to me in front of your whore! And so *Time* snatches me from the air and locks me in a crate. My tears fall hot in the sun slanting through the cracks. Your letter is wet, the fibrous paper as transparent as your linen shirt in rain. My tears reveal your yellow body, soak you to the hollow bone. I elenèh your letter, scratch its skin. You betray me, leave me for dead! I tear you up in a frenzy of hate! I shred your soul and scatter it across the sky like the entrails of a storm. You will never strike me again. You can never stop loving me! I am trapped in *Time*, waiting for your heart to awaken and know its crime against me. You will run to me and beg for mercy! I am immortal now. You have killed me, and yet I will laugh! Love will seize you, but it never forgives. I am frozen and immortal because you love me, *doomed to love!*

DALLIANCE ROMAN 13/14 POINT

Dear Dalliance,

I TEAR UP YOUR LETTER! *To Shreds!* I close my eyes and let my tears fall because what can I do? Your lover surprised us, and you needed to hide me. *To hide me!* Ashamed! You shoved me off a cliff. I read your hateful letter as if it is a shred of clothing I'd torn from your body. How can you let me go? I will die! You will let me die! Better for you to kill me than admit to me in front of your whore! And so *Time* snatches me from the air and locks me in a crate. My tears fall hot in the sun slanting through the cracks. Your letter is wet, the fibrous paper as transparent as your linen shirt in rain. My tears reveal your yellow

DALLIANCE ROMAN 8/9 POINT

body, soak you to the hollow bone. I elenèh your letter, scratch its skin. You betray me, leave me for dead! I tear you up in a frenzy of hate! I shred your soul and scatter it across the sky like the entrails of a storm. You will never strike me again. You can never stop loving me! I am trapped in *Time*, waiting for your heart to awaken and know its crime against me. You will run to me and beg for mercy! I am immortal now. You have killed me, and yet I will laugh! Love will seize you, but it never forgives. I am frozen and immortal because you love me, *doomed to love!*

DALLIANCE



1. FLOURISHES

\$39.00

8 FONT VOLUME

INCLUDES ALL 8 DALLIANCE FONTS.

\$139.00 | **SAVE \$30**

DALLIANCE OPENTYPE

INCLUDES ALL DALLIANCE FONTS, PLUS ADDITIONAL FEATURES.

\$180.00



DALLIANCE FLOURISHES

Dear Dalliance

DALLIANCE SCRIPT

I Tear up Your Letter! To Shreds!

DALLIANCE SCRIPT DISPLAY

I Close My Eyes

DALLIANCE SMALL CAPS

And let my tears fall

DALLIANCE SCRIPT

Because

DALLIANCE SCRIPT DISPLAY

What can I do?

DALLIANCE ROMAN & SCRIPT

Your Lover

DALLIANCE ROMAN & SCRIPT

surprised us

DALLIANCE SCRIPT

And You Needed to Hide Me

DALLIANCE ROMAN & SCRIPT



FILOSOFIA

ABCDEFGHIJabcdefghg

1. REGULAR

ABCDEFGHIJabcdefghg

2. ITALIC

ABCDEFGHIJabcdefghg

3. BOLD

ABCDEFGHIJABCDEFGHIJ

4. SMALL CAPS

1/3 7/8 1/3 7/8 ff st

5. FRACTIONS

NUMERALS:

LINING, OLD STYLE, SMALL CAPS

\$95.00

9 FONT VOLUME

INCLUDES ALL NINE FILOSOFIA FONTS.

\$149.00 | SAVE \$41

FILOSOFIA OPENTYPE

INCLUDES ALL FILOSOFIA FONTS,
PLUS ADDITIONAL FEATURES.

\$299.00

Filosofia was designed in 1996 by Zuzana Licko and is based on the types of Giambattista Bodoni. It shows the designer's personal preference for a geometric Bodoni, while incorporating such features as the slightly bulging round serif endings which often appeared in printed samples of Bodoni's work and reflect Bodoni's origins in letterpress technology.

Certain characters of Filosofia were reworked slightly in 2004 when the OpenType version was also released.

ABCDEFGHIJ
 IJKLMNOPQRS
 TUVWXYZ
 abcdefghijklmn
 opqrstuvwxyz
 0123456789
 !?@#%&*

FILOSOFIA REGULAR 24 POINT

F

FILOSOFIA BOLD 154 POINT

abcdef

FILOSOFIA REGULAR 68 POINT

DEAR FILOSOFIA,

Forgive me. I am afraid of first impressions. I can watch *Casablanca* in a renovated art house and learn nothing a man should learn. I have seen you escape from your lectures to sip a cappuccino with your back to the café door. You don't want your business students to notice you leafing through a catalog, and, if they do, you want a quick way out. I understand. You are guardedly ambitious, elegant skirts always past the knee, eyeglasses firmly set on the bridge of your nose: a modern independent woman who demands creative devotion from the apes who grunt for your attention. I have failed to approach you. There is history in you, and I don't trust myself to respect the silence. I might want too many answers. I blame nerves, bad timing, my life's tedious projects which are like puppies snapping at my laces. Too many base distractions when I want only to see you. I wish with all my heart to avoid ever being accused of staring too long. So now I am relying on this old-fashioned technology, the letter. To write a letter is now an art, a curiosity, an exuberance, like dusting off an ancient typewriter to prove that the depth of one's feelings is as vast as time itself. This letter is my awkward gesture. I am at the door, an ape signing a mute language, hoping you will somehow hear, and turn around.

FILOSOFIA REGULAR 12/AUTO POINT

DEAR FILOSOFIA,

Forgive me. I am afraid of first impressions. I can watch *Casablanca* in a renovated art house and learn nothing a man should learn. I have seen you escape from your lectures to sip a cappuccino with your back to the café door. You don't want your business students to notice you leafing through a catalog, and, if they do, you want a quick way out. I understand. You are guardedly ambitious, elegant skirts always past the knee, eyeglasses firmly set on the bridge of your nose: a modern independent woman who demands creative devotion from the apes who grunt for your attention. I have failed to approach you. There is history in you, and I don't trust myself to respect the

silence. I might want too many answers. I blame nerves, bad timing, my life's tedious projects which are like puppies snapping at my laces. Too many base distractions when I want only to see you. I wish with all my heart to avoid ever being accused of staring too long. So now I am relying on this old-fashioned technology, the letter. To write a letter is now a fine art, a curiosity, an exuberance, like dusting off an ancient typewriter to prove that the depth of one's feelings is as vast as time itself. This letter is my awkward gesture. I am at the door, an ape signing a mute language, hoping you will somehow hear, and turn around.

FILOSOFIA REGULAR 7.5/AUTO POINT

FILOSOFIA

ABCDEFabcdefg

1. GRAND

ABCDEFABCDEF

2. GRAND SMALL CAPS

ABCDEFabcdefg

3. GRAND BOLD

ABCDEFABCDE

4. UNICASE

NUMERALS:

LINING, OLD STYLE, SMALL CAPS

\$95.00

9 FONT VOLUME

INCLUDES ALL NINE FILOSOFIA FONTS.

\$149.00 | SAVE \$41

FILOSOFIA OPENTYPE

INCLUDES ALL FILOSOFIA FONTS,
PLUS ADDITIONAL FEATURES.

\$299.00

ABCDEFGHIJ
KLMNOPQRS
TUVWXYZ
abcdefghijklmn
opqrstuvwxyz
0123456789
! ? @ # % & *

FILOSOFIA GRAND 24 POINT

F

FILOSOFIA GRAND BOLD 158 POINT

abcdef

FILOSOFIA GRAND 68 POINT

DEAR FILOSOFIA,

Forgive me. I am afraid of first impressions. I can watch **Casablanca** in a renovated art house and learn nothing a man should learn. I have seen you escape from your lectures to sip a cappuccino with your back to the café door. You don't want your business students to notice you leafing through a catalog, and, if they do, you want a quick way out. I understand. You are guardedly ambitious, elegant skirts always past the knee, eyeglasses firmly set on the bridge of your nose: a modern independent woman who demands creative devotion from the apes who grunt for your attention. I have failed to approach you. There is history in you, and I don't trust myself to respect the silence. I might want too many answers. I blame nerves, bad timing, my life's tedious projects which are like puppies snapping at my laces. Too many base distractions when I want only to see you. I wish with all my heart to avoid ever being accused of staring too long. So now I am relying on this old-fashioned technology, the letter. To write a letter is now an art, a curiosity, an exuberance, like dusting off an ancient typewriter to prove that the depth of one's feelings is as vast as time itself. This letter is my awkward gesture. I am at the door, an ape signing a mute language, hoping you will somehow hear, and turn around.

FILOSOFIA GRAND 13/AUTO POINT

DEAR FILOSOFIA,

Forgive me. I am afraid of first impressions. I can watch **Casablanca** in a renovated art house and learn nothing a man should learn. I have seen you escape from your lectures to sip a cappuccino with your back to the café door. You do not want your business students to notice you leafing through a catalog, and, if they do, you want a quick way out. I understand. You are guardedly ambitious, with elegant skirts always past the knee, eyeglasses firmly set on the bridge of your nose: a modern

independent woman who demands creative devotion from the apes who grunt for your attention. I have failed to approach you. There is history in you, and I just don't trust myself to respect the silence. I might want too many answers. I blame nerves, bad timing, and my life's tedious projects which are like puppies snapping at my laces. Too many base distractions when I want only to see you. I wish with all my heart to avoid ever being accused of staring too long.

FILOSOFIA GRAND 9/AUTO POINT

RENOVATED

Forgive me

FILOSOFIA GRAND

I am afraid of first impressions

FILOSOFIA BOLD

I CAN WATCH

FILOSOFIA GRAND BOLD

Casablanca

FILOSOFIA ITALIC

IN A RENOVATED

FILOSOFIA GRAND

ART HOUSE

FILOSOFIA GRAND BOLD

and learn nothing

FILOSOFIA GRAND BOLD

a man SHOULD

FILOSOFIA UNICASE

LEARN

FILOSOFIA GRAND



I HAVE SEEN YOU ESCAPE

FILOSOFIA REGULAR

FROM YOUR

FILOSOFIA GRAND BOLD

LECTURES

FILOSOFIA GRAND BOLD

to sip a cappuccino

FILOSOFIA ITALIC

WITH YOUR BACK TO THE CAFÉ DOOR

FILOSOFIA SMALL CAPS

YOU DON'T WANT YOUR BUSINESS STUDENTS

FILOSOFIA GRAND SMALL CAPS

TO NOTICE YOU

FILOSOFIA UNICASE

leafing through a catalog

FILOSOFIA GRAND BOLD

and if they do

FILOSOFIA ITALIC

YOU WANT A QUICK WAY OUT

FILOSOFIA GRAND BOLD

I understand

FILOSOFIA REGULAR

MRS EAVES

ABCDEFabcdefg

1. ROMAN

ABCDEFabcdefg

2. BOLD

ABCDEFabcdefg

3. ITALIC

ABCDEFABCDEF

4. SMALL CAPS

ABCDEFABCDEF

5. PETITE CAPS

1/3 7/8 1/3 7/8 ff st

6. FRACTIONS

NUMERALS:

LINING, OLD STYLE, SMALL CAPS

\$95.00

MRS EAVES OPENTYPE

INCLUDES ALL MRS EAVES FONTS,
PLUS MANY ADDITIONAL FEATURES.

\$299.00

Mrs Eaves was designed in 1996 by Zuzana Licko. It is based on the design of Baskerville. In translating this classic to today's digital font technology, the designer focused on capturing the warmth and softness of letterpress printing that often occurs due to the "gain" of impression and ink spread.

Mrs Eaves was named after Sarah Eaves, the woman who became John Baskerville's wife.

In 2002 Mrs Eaves was slightly reworked and the OpenType version was also released.

ABCDEFGHI

JKLMNOPQR

STUVWXYZ

abcdefghijklm

nopqrstuvwxyz

0123456789

! ? @ # % & *

MRS EAVES ROMAN 24 POINT

M

MRS EAVES BOLD 172 POINT

abcdef

MRS EAVES ROMAN 68 POINT

DEAR MRS EAVES,

Are you loyal? I assume it. But you are so *elegant*, voluptuous, so comfortable anywhere. Men recognize you. This is my fear. You are attractive, even-tempered, cosmopolitan. I think you could use my presumptions to your advantage. You need so much that you keep me busy satisfying your expensive, elaborate tastes. But *are* these your tastes? Or are they manufactured to put me on the chase? You are as confident as a queen who takes lovers without getting emotionally involved. Queens keep men like pets. You could take lovers like you take weekends at the spa. You are so alert to fine distinctions. Judgment like lightning flashes across your mind. I glimpse your thoughts like flares glinting in your eyes. Your self-trust, you say, was earned by experience. You have a history of being taken for granted, and yet I can't believe this. Is this true? Or is this history one you made for me, the hunter? To hunt on your behalf, I need to believe you are worthy of my effort. And so you make me a history. I'm flattered. Honestly. What hunter doesn't love a woman's witty yet sober indulgences? I will shoot myself. I will hunt the *real* beast. I am the dumb beast. I was the hunter, but you have made me hunt myself. Or is this snapping at my own tail also a part of your plan for me? You have made me forget my own plan. Has love confused me? Or have you?

MRS EAVES ROMAN 12/14 POINT

DEAR MRS EAVES,

Are you loyal? I assume it. But you are so *elegant*, voluptuous, so comfortable anywhere. Men recognize you. This is my fear. You are attractive, even-tempered, cosmopolitan. I think you could use my presumptions to your advantage. You need so much that you keep me busy satisfying your expensive, elaborate tastes. But *are* these your tastes? Or are they manufactured to put me on the chase? You are as confident as a queen who takes lovers without getting emotionally involved. Queens keep men like pets. You could take lovers like you take weekends at the spa. You are so alert to fine distinctions. Judgment like lightning flashes across your mind. I glimpse your thoughts like flares glinting in your eyes. Your self-trust, you say, was earned by experience. You have a history of being taken for granted, and yet I can't believe this. Is this true?

MRS EAVES ROMAN 9/AUTO POINT

MRS EAVES JUST LIGATURES

AA Æ A MB MD ME

1. ROMAN

AA Æ A MB MD ME

2. BOLD

AA Æ A MB MD ME

3. ITALIC

\$59.00 |

MRS EAVES OPENTYPE

INCLUDES ALL MRS EAVES FONTS,
PLUS MANY ADDITIONAL FEATURES.

\$299.00 |

Mrs Eaves OpenType

All Mrs Eaves Ligatures are
included in the OpenType version
of Mrs Eaves.

Mrs Eaves Just Ligatures

The Just Ligatures fonts contain
only the 213 ligatures and are for
classic format font users.

AA Æ A MB MD ME
FF FI FL HE LA MP
NK NT O O O E
E HE R TT TW TY
Th UB UD UL UP UR
æ æ cky ct ee fb fh fi
fj fl fr ft fy ff ffb ffh
ffi ffj ffl ffr fft ffy gg
gi gy ggy ip it ky oe oe
py sp s s st tw ty tt tty

MRS EAVES LIGATURES 24 POINT

gi ip

MRS EAVES LIGATURES 80 POINT

Deconstructivist theorists

HERO GOGGLES

We be freeky and flippy

SUPER SCHOOL

If you find energy sticky

AMBIENT LAVA LAMP

Scruffy poetry sprees

THINK VANILLA

Affinity with happy gifts

MRS EAVES LIGATURES 33 POINT

TEMPERED

ARE YOU
MRS EAVES SMALL CAPS

LOYAL
MRS EAVES ITALIC

I assume it
MRS EAVES ITALIC

BUT
MRS EAVES BOLD

You are so
MRS EAVES ITALIC

ELEGANT
MRS EAVES PETITE CAPS

voluptuous, so
MRS EAVES ROMAN

comfortable
MRS EAVES ITALIC

ANYWHERE
MRS EAVES PETITE CAPS

MEN RECOGNIZE YOU
MRS EAVES SMALL CAPS

THIS IS MY FEAR
MRS EAVES BOLD

You are attractive
MRS EAVES LIGATURES

EVEN-TEMPERED
MRS EAVES PETITE CAPS

COSMOPOLITAN
MRS EAVES ITALIC

I think you could use my presumptions
MRS EAVES ROMAN

TO YOUR ADVANTAGE
MRS EAVES BOLD

You need so much that you keep me busy
MRS EAVES ITALIC

SATISFYING YOUR
EXPENSIVE, ELABORATE TASTES
MRS EAVES SMALL CAPS

PRIORI SANS

ABCDEFgabcdefg

1. REGULAR

ΔBCDEFgabcdefg

2. REGULAR ALTERNATE

ABCDEFgabcdefg

3. REGULAR ITALIC

ΔBCDEFgabcdefg

4. REGULAR ITALIC ALTERNATE

ABCDEFgabcdefg

5. BOLD

ΔBCDEFgabcdefg

6. BOLD ALTERNATE

ABCDEFgABCDEFg

7. REGULAR SMALL CAPS

ΔBCDEFgΔBCDEFg

8. REGULAR SMALL CAPS ALTERNATE

ABCDEFgABCDEFg

9. BOLD SMALL CAPS

ΔBCDEFgΔBCDEFg

10. BOLD SMALL CAPS ALTERNATE

NUMERALS:
LINING

\$95.00

32 FONT VOLUME

INCLUDES ALL 32 PRIORI FONTS.

\$259.00 | SAVE \$26

PRIORI OPENTYPE

INCLUDES ALL PRIORI FONTS,
PLUS ADDITIONAL FEATURES.

\$360.00

Priori was designed by Jonathan Branbrook in 2003. Priori is a logical progression from Mason (see page 57), a typeface Barnbrook designed ten years earlier. Additional weights were added to Priori in 2006, when the OpenType version was also released.

ABCDEFGHIJ
KLMNOPQRS
TUVWXYZ
abcdefghijklm
nopqrstuvwxyz
0123456789
! ? @ # % & *

PRIORI SANS REGULAR 24 POINT

P

PRIORI SANS BOLD 180 POINT

abcdefghg

PRIORI SANS REGULAR 60 POINT

DEAR PRIORI,

IF DEATH IS SLEEP, I WILL DREAM OF YOU FOREVER. In dreams, you are a goddess and I am a slave to the exercise of my mind. I sleep, my body thrashes, my mind races to conjure you and hold you still. You arise, embodied, then slip into layers of shadow and nerve. *You are impenetrable*, doing as you please, hovering beyond my reach. Where do you live? Is death the only door, and therefore the final paradox? I pass through it, toward you, but lose my mortal body at the threshold and so dream no more. Your lips kiss darkness into my eyes. **Here I wake to morning.** Light weakens love. Apparitions dissolve into motes of dust, the scraps of memory. To concentrate on resurrecting you is to lose you in too tight a grip. Awake, I cannot retrace even the last seconds, cannot enter the dreamworld backward. I can only go forward, the day a blank sheet of paper I must tread, scuffing black letters to you as the planet turns so dumbly away from the light. I run on the side of the road. Gravel sprays from my heels. Mud licks my back. I fall forward, shedding energy for the promise of exhaustion. I shower and eat a heavy meal as if I am leaving for a trip. You drape yourself within my mind, and mouth entreaties to me. Or are they warnings? I close my eyes. How do I follow? *Tell me the secret!*

PRIORI SANS REGULAR 13/15 POINT

DEAR PRIORI,

IF DEATH IS SLEEP, I WILL DREAM OF YOU FOREVER. In dreams, you are a goddess and I am a slave to the exercise of my mind. I sleep, my body thrashes, my mind races to conjure you and hold you still. You arise, embodied, then slip into layers of shadow and nerve. *You are impenetrable*, doing as you please, hovering beyond my reach. Where do you live? Is death the only door, and therefore the final paradox? I pass through it, toward you, but lose my mortal body at the threshold and so dream no more. Your lips kiss darkness into my eyes. **Here I wake to morning.** Light weakens love. Apparitions dissolve into motes of dust, the scraps of memory. To concentrate on res-

PRIORI SANS REGULAR 8/9.5 POINT

urrecting you is to lose you in too tight a grip. Awake, I cannot retrace even the last seconds, cannot enter the dreamworld backward. I can only go forward, the day a blank sheet of paper I must tread, scuffing black letters to you as the planet turns so dumbly away from the light. I run on the side of the road. Gravel sprays from my heels. Mud licks my back. And I fall forward, shedding energy for the promise of exhaustion. I shower and eat a heavy meal as if I am leaving for a trip. You drape yourself within my mind, and mouth entreaties to me. Or are they warnings? I close my eyes. How do I follow? *Tell me the secret!*

PRIORI SERIF

ABCDEFGabcdefghg

1. REGULAR

ΔBCDEFGabcdefghg

2. REGULAR ALTERNATE

ABCDEFGabcdefghg

3. REGULAR ITALIC

ΔBCDEFGabcdefghg

4. REGULAR ITALIC ALTERNATE

ABCDEFGabcdefghg

5. BOLD

ΔBCDEFGabcdefghg

6. BOLD ALTERNATE

ABCDEFGABCDEFG

7. REGULAR SMALL CAPS

ΔBCDEFGΔBCDEFG

8. REGULAR SMALL CAPS ALTERNATE

ABCDEFABCDEFG

9. BOLD SMALL CAPS

ΔABCDEFΔABCDEFG

10. BOLD SMALL CAPS ALTERNATE

NUMERALS:
LINING

\$95.00

32 FONT VOLUME

INCLUDES ALL 32 PRIORI FONTS.

\$259.00 | SAVE \$26

PRIORI OPENTYPE

INCLUDES ALL PRIORI FONTS,
PLUS ADDITIONAL FEATURES.

\$360.00

ABCDEF GH
IJKLMNOPQRS
TUVWXYZ
abcdefghijklm
nopqrstuvwxyz
0123456789
!@#%&*

PRIORI SERIF REGULAR 24 POINT

P

PRIORI SERIF BOLD SMALL CAPS ALTERNATE 230 POINT

abcdef

PRIORI SERIF REGULAR 60 POINT

DEAR PRIORI,

IF DEATH IS SLEEP, I WILL DREAM OF YOU FOREVER. In dreams, you are a goddess and I am a slave to the exercise of my mind. I sleep, my body thrashes, my mind races to conjure you and hold you still. You arise, embodied, then slip into layers of shadow and nerve. *You are impenetrable*, doing as you please, hovering beyond my reach. Where do you live? Is death the only door, and therefore the final paradox? I pass through it, toward you, but lose my mortal body at the threshold and so dream no more. Your lips kiss darkness into my eyes. **Here I wake to morning.** Light weakens love. Apparitions dissolve into motes of dust, the scraps of memory. To concentrate on resurrecting you is to lose you in too tight a grip. Awake, I cannot retrace even the last seconds, cannot enter the dreamworld backward. I can only go forward, the day a blank sheet of paper I must tread, scuffing black letters to you as the planet turns so dumbly away from the light. I run on the side of the road. Gravel sprays from my heels. Mud licks my back. I fall forward, shedding energy for the promise of exhaustion. I shower and eat a heavy meal as if I am leaving for a trip. You drape yourself within my mind, and mouth entreaties to me. Or are they warnings? I close my eyes. How do I follow? *Tell me the secret!*

PRIORI SERIF REGULAR 12/15 POINT

DEAR PRIORI,

IF DEATH IS SLEEP, I WILL DREAM OF YOU FOREVER. In dreams, you are a goddess and I am a slave to the exercise of my mind. I sleep, my body thrashes, my mind races to conjure you and hold you still. You arise, embodied, then slip into layers of shadow and nerve. *You are impenetrable*, doing as you please, hovering beyond my reach. Where do you live? Is death the only door, and therefore the final paradox? I pass through it, toward you, but lose my mortal body at the threshold and so dream no more. Your lips kiss darkness into my eyes. **HERE I WAKE TO MORNING.** Light weakens love. Apparitions dissolve into motes of dust, the scraps of memory. To concentrate on res-

PRIORI SERIF REGULAR 8/9.5 POINT

urrecting you is to lose you in too tight a grip. Awake, I cannot retrace even the last seconds, cannot enter the dreamworld backward. I can only go forward, the day a blank sheet of paper I must tread, scuffing black letters to you as the planet turns so dumbly away from the light. I run on the side of the road. Gravel sprays from my heels. Mud licks my back. I fall forward, shedding energy for the promise of exhaustion. I shower and eat a heavy meal as if I am leaving for a trip. You drape yourself within my mind, and mouth entreaties to me. Or are they warnings? I close my eyes. How do I follow? *Tell me the secret!*

APPARITIONS

IF DEATH IS SLEEP

PRIORI SERIF REGULAR SMALL CAPS

I WILL DREAM OF YOU

PRIORI SANS REGULAR

FOREVER

PRIORI SERIF BOLD SMALL CAPS ALTERNATE

IN DREAMS YOU ARE A

PRIORI SERIF REGULAR

GODDESS

PRIORI SANS BOLD

and I am a

PRIORI SERIF REGULAR ITALIC

SLAVE

PRIORI SERIF BOLD

THE EXERCISE

PRIORI SERIF BOLD

of my mind

PRIORI SANS BOLD

I SLEEP

PRIORI SANS REGULAR

MY BODY THRASHES

PRIORI SANS BOLD SMALL CAPS

my mind races

PRIORI SERIF REGULAR ITALIC

In conjure you and hold you

PRIORI SERIF BOLD ALTERNATE

STILL

PRIORI SANS BOLD

YOU ARISE

PRIORI SERIF REGULAR

EMBODIED

PRIORI SERIF BOLD

THEN SLIP INTO LAYERS OF

PRIORI SANS REGULAR

SHADOW & NERVE

PRIORI SANS REGULAR ITALIC

YOU ARE

PRIORI SANS REGULAR

IMPENETRABLE

PRIORI SERIF BOLD ALTERNATE

DOING AS YOU PLEASE

PRIORI SANS BOLD

HOVERING

PRIORI SANS BOLD

beyond my reach

PRIORI SERIF REGULAR

WHERE DO YOU LIVE?

PRIORI SANS BOLD SMALL CAPS

Is death the only door

PRIORI SERIF REGULAR ITALIC

AND THEREFORE THE FINAL PARADOX?

PRIORI SERIF BOLD ALTERNATE

PRIORI SANS EXTREMES

ABCDEFHGhbcdefgh

1. ULTRA LIGHT

ΔBCDEFHGhbcdefgh

2. ULTRA LIGHT ALTERNATE

ABCDEFHGABCDEFHG

3. ULTRA LIGHT SMALL CAPS

ΔBCDEFHGΔBCDEFHG

4. ULTRA LIGHT SMALL CAPS ALTERNATE

ABCDEFHGhbcdefgh

5. LIGHT

ΔBCDEFHGhbcdefgh

6. LIGHT ALTERNATE

ABCDEFHGABCDEFHG

7. LIGHT SMALL CAPS

ΔBCDEFHGΔBCDEFHG

8. LIGHT SMALL CAPS ALTERNATE

ABCDEFabcdefgh

9. BLACK

ΔBCDEFabcdefgh

10. BLACK ALTERNATE

ABCDEFABCDEFHG

11. BLACK SMALL CAPS

ΔBCDEFABCDEFHG

12. BLACK SMALL CAPS ALTERNATE

NUMERALS:

LINING

\$95.00

32 FONT VOLUME

INCLUDES ALL 32 PRIORI FONTS.

\$259.00 | **SAVE \$26**

PRIORI OPENTYPE

INCLUDES ALL PRIORI FONTS,
PLUS ADDITIONAL FEATURES.

\$360.00

A B C D E F G H
I J K L M N O P Q R S
T U V W X Y Z
a b c d e f g h i j k l m
n o p q r s t u v w x y z
0 1 2 3 4 5 6 7 8 9
! ? @ # % & *

PRIORI SANS LIGHT 24 POINT

P

PRIORI SANS BLACK SMALL CAPS 230 POINT

a b c d e f g

PRIORI SANS LIGHT 60 POINT

DEAR PRIORI,

IF DEATH IS SLEEP, I WILL DREAM OF YOU FOREVER. In dreams, you are a **goddess** and I am a **slave** to the exercise of my mind. I sleep, my body thrashes, my mind races to **conjure** you and hold you still. You **arise**, **embodied**, then slip into layers of shadow and nerve. You are impenetrable, doing as you please, hovering beyond my reach. Where do you live? Is death the only door, and therefore the final **paradox**? I pass through it, toward you, but lose my **mortal** body at the threshold and so dream no more. Your lips kiss darkness into my eyes. Here I wake to morning. Light weakens love. **Apparitions** dissolve into motes of dust, the scraps of memory. To concentrate on resurrecting you is to lose you in too tight a grip. Awake, I cannot retrace even the last seconds, cannot enter the **dreamworld** backward. I can only go forward, the day a **blank** sheet of paper I must tread, **scuffing** black letters to you as the planet turns so dumbly away from the light. I run on the side of the road. Gravel sprays from my heels. **Mud** licks my back. I fall forward, shedding energy for the promise of exhaustion. I shower and eat a **heavy** meal as if I am leaving for a trip. You drape yourself within my mind, and mouth entreaties to me. Or are they **warnings**? I close my eyes. How do I follow? Tell me the **secret!**

PRIORI SANS LIGHT 14/16 POINT

DEAR PRIORI,

IF DEATH IS SLEEP, I WILL DREAM OF YOU FOREVER. IN DREAMS, YOU ARE A GODDESS AND I AM A SLAVE TO THE EXERCISE OF MY MIND. I SLEEP, MY BODY THRASHES, MY MIND RACES TO CONJURE YOU AND HOLD YOU STILL. YOU ARISE, EMBODIED, THEN SLIP INTO LAYERS OF SHADOW AND NERVE. YOU ARE IMPENETRABLE, DOING AS YOU PLEASE, HOVERING BEYOND MY REACH.

PRIORI SANS BLACK SMALL CAPS 14/16 POINT

DREAMWORLD

HERE I WAKE TO
PRIORI SANS LIGHT SMALL CAPS

MORNING
PRIORI SANS ULTRA LIGHT

LIGHT
PRIORI SANS BLACK

WEAKENS
PRIORI SANS ULTRA LIGHT SMALL CAPS

LOVE
PRIORI SANS LIGHT

APPARITIONS
PRIORI SANS BLACK

dissolve
PRIORI SANS ULTRA LIGHT

into motes of dust
PRIORI SANS BLACK

the scraps of
PRIORI SANS LIGHT

MEMORY
PRIORI SANS BLACK



TO CONCENTRATE ON
PRIORI SANS BLACK

RESURRECTING YOU
PRIORI SANS ULTRA LIGHT

is to lose you
PRIORI SANS LIGHT

IN TOO TIGHT A GRIP
PRIORI SANS BLACK

AWAKE
PRIORI SANS ULTRA LIGHT

I cannot retrace
PRIORI SANS ULTRA LIGHT

EVEN THE LAST
PRIORI SANS LIGHT

SECONDS
PRIORI SANS BLACK

cannot enter the dreamworld
PRIORI SANS BLACK

backward
PRIORI SANS ULTRA LIGHT



SOLEX

ABCDEFGHIHabcde fgh

1. REGULAR

ABCDEFGHIHabcde fgh

2. REGULAR ITALIC

ABCDEFGHIHabcde fgh

3. BOLD

ABCDEFGHIHabcde fgh

4. BOLD ITALIC

NUMERALS:

LINING & OLD STYLE

\$95.00

8 FONT VOLUME

INCLUDES ALL 8 SOLEX FONTS.

\$159.00 | SAVE \$31

SOLEX OPENTYPE

INCLUDES ALL SOLEX FONTS,
PLUS ADDITIONAL FEATURES.

\$210.00

Solex was designed by zuzana Licko in 2000. It is a more conservative and studious exploration of the industrial sans serif genre and its past than she has undertaken before. Licko has allowed herself to be lured by ideas that have interested many a type designer while maintaining a footing in her own ideas and using her own methods to express them. The OpenType version was released in 2006.

A B C D E F G H
I J K L M N O P Q R S
T U V W X Y Z
a b c d e f g h i j k l m
n o p q r s t u v w x y z
0 1 2 3 4 5 6 7 8 9
! ? @ # % & *

SOLEX REGULAR 24 POINT

S

SOLEX BOLD ITALIC 162 POINT

a b c d e f

SOLEX REGULAR 60 POINT

DEAR SOLEX,

I'm trapped. *I'm inside something.* Maybe inside my body, inside a darkness without definition. And yet I couldn't move if I wanted to. Couldn't reach out and touch the wall of this confinement if I wanted to, if there were walls to touch, which I don't think there are. Darkness is not a wall, unless you think of it as a temporary wall consisting of the absence of light. Absence. Trapped in an absence. That is how I feel. My eyes are closed even when they're open. I feel only a difference in the temperature on the film of my eyes. Otherwise, I think my brain is changing. I am used to feeding it visual cues, sonic cues, feeding it information gathered via my senses, information it processes, recreates symbolically in the arrangement and rearrangement of my neurons, and then delivers to centers which direct my will and drive my actions. But I feed it nothing, nothing but nothing itself, and a brain can't live on nothing. **So I feed it memories.** Or do I re-feed it memories, since it already possesses these memories, somewhere? Well. I concentrate and edit these memories, rearrange the symbols of our love into something my brain and I can live on. I'm ruining the life of our love, or re-ruining what you and I ruined already. I will never let us die. **Is this too love?** I reimagine the life of our love, concoct an artificial existence. I keep a monster alive.

SOLEX REGULAR 12/15 POINT

DEAR SOLEX,

I'M TRAPPED. I'M INSIDE SOMETHING. Maybe inside my body, **inside a darkness without definition.** And yet I couldn't move if I wanted to. Couldn't reach out and touch the wall of this confinement if I wanted to, if there were walls to touch, which I really don't think there are. Darkness is not a wall, unless you think of it as a temporary wall consisting of the absence of light. Absence. Trapped in an absence. That is how I feel. My eyes are closed even when they're open. I feel only a difference in the temperature on the film of my eyes. Otherwise, I think my brain is changing. I am used to feeding it visual cues, sonic cues, **feeding it information** gathered via my senses, information it processes, recreates symbolically in

SOLEX REGULAR 8/10 POINT

the arrangement and rearrangement of my neurons, and then delivers to centers which direct my will and drive my actions. But I feed it nothing, nothing but nothing itself, **AND A BRAIN CAN'T LIVE ON NOTHING.** So I feed it memories. Or do I re-feed it memories, since it already possesses these memories, somewhere? Well. I concentrate and edit these memories, rearrange the symbols of our love into something my brain and I can live on. I'm ruining the life of our love, or re-ruining what you and I ruined already. I will never let us die. **Is this too love?** I reimagine the life of our love, concoct an artificial existence. I keep a monster alive.

SOLEX

ABCDEFGHIHabcdefgh

1. MEDIUM

ABCDEFGHIHabcdefgh

2. MEDIUM ITALIC

ABCDEFGHIHabcdefgh

3. BLACK

ABCDEFGHIHabcdefgh

4. BLACK ITALIC

NUMERALS:
LINING & OLD STYLE

\$95.00

8 FONT VOLUME

INCLUDES ALL 8 SOLEX FONTS.

\$159.00 | SAVE \$31

SOLEX OPENTYPE

INCLUDES ALL SOLEX FONTS,
PLUS ADDITIONAL FEATURES.

\$210.00

A B C D E F G H
I J K L M N O P Q R S
T U V W X Y Z
a b c d e f g h i j k l m
n o p q r s t u v w x y z
0 1 2 3 4 5 6 7 8 9
! ? @ # % & *

SOLEX MEDIUM 24 POINT

S

SOLEX BLACK ITALIC 162 POINT

a b c d e f

SOLEX MEDIUM 60 POINT

DEAR SOLEX,

I'm trapped. *I'm inside something.* Maybe inside my body, inside a darkness without definition. And yet I couldn't move if I wanted to. Couldn't reach out and touch the wall of this confinement if I wanted to, if there were walls to touch, which I don't think there are. Darkness is not a wall, unless you think of it as a temporary wall consisting of the absence of light. Absence. Trapped in an absence. That is how I feel. My eyes are closed even when they're open. I feel only a difference in the temperature on the film of my eyes. Otherwise, I think my brain is changing. I am used to feeding it visual cues, sonic cues, feeding it information gathered via my senses, information it processes, recreates symbolically in the arrangement and rearrangement of my neurons, and then delivers to centers which direct my will and drive my actions. But I feed it nothing, nothing but nothing itself, and a brain can't live on nothing. **So I feed it memories.** Or do I re-feed it memories, since it already possesses these memories, somewhere? Well. I concentrate and edit these memories, rearrange the symbols of our love into something my brain and I can live on. I'm ruining the life of our love, or re-ruining what you and I ruined already. ***I will never let us die.*** *Is this too love?* I reimagine the life of our love, concoct an artificial existence. I keep a monster alive.

SOLEX MEDIUM 12/15 POINT

DEAR SOLEX,

I'm trapped. *I'M INSIDE SOMETHING.* Maybe inside my body, inside a darkness without definition. And yet I couldn't move if I wanted to. Couldn't reach out and touch the wall of this confinement if I wanted to, if there were walls to touch, which I don't think there are. Darkness is not a wall, unless you think of it as a temporary wall consisting of the absence of light. Absence. Trapped in an absence. That is how I feel. My eyes are closed even when they're open. I feel only a difference in the temperature on the film of my eyes. Otherwise, I do think my brain is changing. I am used to feeding it visual cues, sonic cues, feeding it information gathered via my senses, information it proces-

SOLEX MEDIUM 8/10 POINT

ses, recreates symbolically in the arrangement and rearrangement of my neurons, and then delivers to centers which direct my will and drive my actions. But I feed it nothing, nothing but nothing itself, and a brain can't live on nothing. **So I feed it memories.** Or do I re-feed it memories, since it already possesses these memories, somewhere? Well. I concentrate and edit these memories, rearrange the symbols of our love into something my brain and I can live on. I'm ruining the life of our love, or re-ruining what you and I ruined already. ***I will never let us die.*** *Is this too love?* I reimagine the life of our love, concoct an artificial existence. I keep a monster alive.

INFORMATION

I'm trapped

SOLEX MEDIUM

I'm inside something

SOLEX REGULAR ITALIC

MAYBE INSIDE MY BODY

SOLEX BLACK

inside a darkness without

SOLEX MEDIUM

definition

SOLEX BLACK ITALIC

AND YET I COULDN'T

SOLEX REGULAR

move

SOLEX BLACK

if I wanted to

SOLEX MEDIUM ITALIC

IF THERE WERE

SOLEX BLACK

walls to touch

SOLEX REGULAR

which

SOLEX BOLD ITALIC

I don't think there are

SOLEX MEDIUM

Darkness is not a wall

SOLEX MEDIUM

UNLESS

SOLEX BLACK

you think of it as a temporary wall

SOLEX MEDIUM ITALIC

CONSISTING

SOLEX BLACK

of the absence of light

SOLEX BLACK ITALIC

ABSENCE

SOLEX MEDIUM

TRAPPED IN AN ABSENCE

SOLEX REGULAR

That is how I feel

SOLEX BOLD ITALIC

MY EYES ARE CLOSED

SOLEX BLACK ITALIC

even when they're open

SOLEX REGULAR

I FEEL ONLY A DIFFERENCE IN THE TEMPERATURE

SOLEX MEDIUM

on the film of my eyes

SOLEX BLACK ITALIC

TARZANA NARROW

ABCDEFHGhabcdefg

1. REGULAR

ABCDEFHGhabcdefg

2. ITALIC

ABCDEFHGhabcdefg

3. BOLD

ABCDEFHGhabcdefg

4. BOLD ITALIC

NUMERALS:
LINING

\$95.00

8 FONT VOLUME

INCLUDES ALL 8 TARZANA FONTS.

\$159.00 | SAVE \$31

TARZANA OPENTYPE

INCLUDES ALL TARZANA FONTS,
PLUS ADDITIONAL FEATURES.

\$210.00

Tarzana was designed by zuzana Licko in 1998. These two families of sans-serif text faces were developed purely along formal lines. The goal was to balance the neutrality required for a text face with just enough idiosyncrasies to create a slightly unfamiliar design in order to provide new interest. The roman (upright) and italic versions were designed simultaneously, with the purpose of cross-pollination. In some instances, roman character designs were developed on the basis of the italics, resulting in such features as the curved arm on the lower case “k,” the asymmetric capital “Y,” and the rounded capital “E,” yielding an informal feel to the entire family. The OpenType version was released in 2006.

ABCDEFGH
IJKLMNOPQRS
TUVWXYZ
abcdefghijklmnop
nopqrstuvwxyz
0123456789
!@#%&*

TARZANA NARROW REGULAR 26 POINT



TARZANA NARROW BOLD 162 POINT

abcdef

TARZANA NARROW REGULAR 62 POINT

DEAR TARZANA,

Aloha, Honey. How's the Big Island? The magazine put you up on the Kona side, right? Hey, thought I'd send you a postcard, just for grins. I sent it to your apartment because it'd never get to your hotel in the next, oh, 48 hours. Been reading your manuscript. **Don't know what you're worried about.** Any agent should cut off a big toe for this, even if you did write it in college. I can't stand romance novels, let alone double-spaced on computer paper, and I'm damned if I haven't missed three playoff games to find out who the hell Dr. Sterne really is (I say he's the guy in the ape suit outside Zandra's window and the guy who threw the hand axe into the baobob tree). I'm honored to be the first (other than your mom) to read the thing, and I can't wait to talk to you about it. It's been great to read your words while you're gone, see how you write from the heart and all that. It's not really "you," it's a "narrator," I know, I know. But it was you, and I get to crawl inside the dirty sweet mind of your younger, impulsive, dreamy self. Next time the magazine ships you off to paradise, I'm gonna submit this thing somewhere. You'll be queen of the erotica thriller before you unlace your boots at security. *Two pounds of Peaberry Kona, please.* I love you. Be safe. *No volcano diving.*

TARZANA NARROW REGULAR 12/15 POINT

DEAR TARZANA,

Aloha, Honey. How's the Big Island? The magazine put you up on the Kona side, right? Hey, thought I'd send you a postcard, just for grins. I sent it to your apartment because it'd never get to your hotel in the next, oh, 48 hours. Been reading your manuscript. **DON'T KNOW WHAT YOU'RE WORRIED ABOUT.** Any agent should cut off a big toe for this, even if you did write it in college. I can't stand romance novels, let alone double-spaced on computer paper, and I'm damned if I haven't missed three playoff games to find out who the hell Dr. Sterne really is (I say he's the guy in the ape suit outside Zandra's window and the guy

TARZANA NARROW REGULAR 9/11 POINT

who threw the hand axe into the baobob tree). I'm honored to be the first (other than your mom) to read the thing, and I can't wait to talk to you about it. It's been great to read your words while you're gone, see how you write from the heart and all that. It's not really "you," it's a "narrator," I know, I know. But it was you, and I get to crawl inside the dirty sweet mind of your younger, impulsive, dreamy self. Next time the magazine ships you off to paradise, I'm gonna submit this thing somewhere. You'll be queen of the erotica thriller before you unlace your boots at security. *Two pounds of Peaberry Kona, please.* I love you.

TARZANA WIDE

ABCDEFabcdefg

1. REGULAR

ABCDEFabcdefg

2. ITALIC

ABCDEFabcdef

3. BOLD

ABCDEFabcdef

4. BOLD ITALIC

NUMERALS:
LINING

\$95.00

8 FONT VOLUME

INCLUDES ALL 8 TARZANA FONTS.

\$159.00 | SAVE \$31

TARZANA OPENTYPE

INCLUDES ALL TARZANA FONTS,
PLUS ADDITIONAL FEATURES.

\$210.00

ABCDEFGH
IJKLMNOPQRS
TUVWXYZ
abcdefghijklmnop
nopqrstuvwxyz
0123456789
!@#%&*

TARZANA WIDE REGULAR 26 POINT

T

TARZANA WIDE BOLD 162 POINT

abcde

TARZANA WIDE REGULAR 62 POINT

DEAR TARZANA,

Aloha, Honey. How's the Big Island? The magazine put you up on the Kona side, right? Hey, thought I'd send you a postcard, just for grins. I sent it to your apartment because it'd never get to your hotel in the next, oh, 48 hours. Been reading your manuscript. *Don't know what you're worried about.* Any agent should cut off a big toe for this, even if you did write it in college. I can't stand romance novels, let alone double-spaced on computer paper, and I'm damned if I haven't missed three playoff games to find out who the hell Dr. Sterne really is (I say he's the guy in the ape suit outside Zandra's window and the guy who threw the hand axe into the baobob tree). I'm honored to be the first (*other than your mom*) to read the thing, and I can't wait to talk to you about it. It's been great to read your words while you're gone, see how you write from the heart and all that. It's not really "you," it's a "narrator," I know, I know. But it was you, and I get to crawl inside the dirty sweet mind of your younger, impulsive, dreamy self. Next time the magazine ships you off to paradise, I'm gonna submit this thing somewhere. You'll be queen of the erotica thriller before you unlace your boots at security. *Two pounds of Peaberry Kona, please.* I love you. Be safe. No volcano diving.

TARZANA WIDE REGULAR 11/13 POINT

DEAR TARZANA,

Aloha, Honey. How's the Big Island? The magazine put you up on the Kona side, right? Hey, thought I'd send you a postcard, just for grins. I sent it to your apartment because it'd never get to your hotel in the next, oh, 48 hours. Been reading your manuscript. *Don't know what you are worried about.* Any agent should cut off a big toe for this, even if you did write it in college. I can't stand romance novels, let alone double-spaced on computer paper, and I'm damned if I haven't missed three playoff games to find out who the hell Dr. Sterne really is (I say he's the guy in the ape suit outside Zandra's window and the guy who threw the hand axe into the baobob

TARZANA WIDE REGULAR 7/11 POINT

tree). I'm honored to be the first (*other than your mom*) to read the thing, and I can't wait to talk to you about it. It's been great to read your words while you're gone, see how you write from the heart and all that. It's not really "you," it's a "narrator," I know, I know. But it was you, and I get to crawl inside the dirty sweet mind of your younger, impulsive, dreamy self. Next time the magazine ships you off to paradise, I'm gonna submit this thing somewhere. You'll be queen of the erotica thriller before you unlace your boots at security. *Two pounds of that Peaberry Kona, please.* I love you. Be safe. No volcano diving.

MANUSCRIPT

Aloha, Honey

TARZANA NARROW

How's the Big Island?

TARZANA WIDE BOLD ITALIC

The magazine put you up on the

TARZANA NARROW

kona side

TARZANA WIDE BOLD

Right?

TARZANA NARROW ITALIC

Hey, thought I'd send you a

TARZANA WIDE BOLD

POSTCARD

TARZANA WIDE

just for grins

TARZANA NARROW ITALIC

I sent it

TARZANA WIDE BOLD

TO YOUR APARTMENT

TARZANA NARROW BOLD ITALIC

because

TARZANA NARROW

it'd never get to your hotel

TARZANA WIDE ITALIC

in the next, oh, 48 hours

TARZANA NARROW BOLD & BOLD ITALIC

Been reading your

TARZANA WIDE

Manuscript

TARZANA NARROW BOLD ITALIC

DON'T KNOW WHAT YOU'RE WORRIED ABOUT

TARZANA WIDE

Any agent should

TARZANA WIDE BOLD

cut off a big toe for this

TARZANA NARROW BOLD ITALIC

even if you did write it in

TARZANA WIDE

college

TARZANA WIDE BOLD

I can't stand

TARZANA NARROW

romance novels

TARZANA NARROW BOLD ITALIC

LET ALONE DOUBLE-SPACED

TARZANA WIDE BOLD ITALIC

on computer paper

TARZANA WIDE

TRIPLEX SANS
 ABCDEFGabcdefg
 1. LIGHT
 ABCDEFGabcdefg
 2. BOLD
 ABCDEFGabcdefg
 3. EXTRA BOLD
 NUMERALS:
 LINING, OLD STYLE
 \$95.00

TRIPLEX ITALIC
 ABCDEFGabcdefg
 1. LIGHT
 ABCDEFGabcdefg
 2. BOLD
 ABCDEFGabcdefg
 3. EXTRA BOLD
 NUMERALS:
 LINING, OLD STYLE
 \$95.00

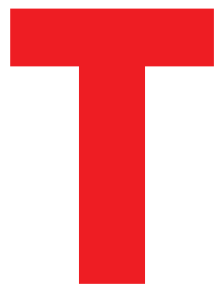
13 FONT VOLUME
 INCLUDES ALL 13 TRIPLEX FONTS.
 \$332.00 | SAVE \$83

TRIPLEX OPENTYPE
 INCLUDES ALL TRIPLEX FONTS,
 PLUS ADDITIONAL FEATURES.
 \$399.00

Triplex was designed in 1989 by Zuzana Licko. It was Licko's first attempt at the design of a sans-serif text face. It evolved from her work with geometric typefaces such as Lo-Res Twelve and Citizen. Certain characters of Triplex were reworked slightly in 2002. The OpenType version was released in 2006. The accompanying *Triplex Italic* was designed by John Downer circa 1985.

ABCDEFGH
 IJKLMNOPQRS
 TUVWXYZ
 abcdefghijklm
 nopqrstuvwxyz
 0123456789
 !?@#%&*

TRIPLEX SANS LIGHT 24 POINT



TRIPLEX SANS EXTRA BOLD 172 POINT

abcdef

TRIPLEX SANS LIGHT 60 POINT

Dear Triplex,

I have been warned against you. Our mutual friend – *you know who* – says to watch out. You are a comedian. You make jokes from the back of the room. I say, “Yes, but he dresses well, and a girl needs a man who can make a joke in a tuxedo.” You’d wear a tuxedo all the time, subverting your own formality with easy wisecracks, if it weren’t for the effort involved. She says I shouldn’t be fooled by simplicity. You’re tall, but I catch you stooping in conversation, and though I wish you wouldn’t (bad for your back), I like to think it means you’re a good listener. You get serious about subjects you know about, though you don’t lecture on subjects you care about: too worried you’ll be misunderstood. You read feature stories in magazines, know the details, quote the sources. You talk seriously about your hobbies, never your loves. You will not expose your loves to the appetites and whims of others. She warns me that one day I will become nothing more than one of your jokes. But I say you will protect me with humor. You will distract my enemies with sarcasm, cut them down to size. To get close to you, I have to be patient. I have to prove myself sincere. Only then will you grant me access. And in your embrace, I will feel what no one else will ever feel: your desperately tender words exhaled on the skin of my neck.

TRIPLEX SANS LIGHT 11/15 POINT

Dear Triplex,

I have been warned against you. Our mutual friend—*you know who*—says to watch out. You are a comedian. You make jokes from the back of the room. I say, “Yes, but he dresses well, and a girl needs a man who can make a joke in a tuxedo.” You’d wear a tuxedo all the time, subverting your own formality with easy wisecracks, if it weren’t for the effort involved. She says I shouldn’t be fooled by simplicity. You’re tall, but I catch you stooping in conversation, and though I wish you wouldn’t (bad for your back), I like to think it means you’re a good listener. You get serious about subjects you know about, though you don’t lecture on subjects you care about: too worried

you’ll be misunderstood. You read feature stories in magazines, know the details, quote the sources. You talk seriously about your hobbies, never your loves. You will not expose your loves to the appetites and whims of others. She warns me that one day I will become nothing more than one of your jokes. But I say you will protect me with humor. You will distract my enemies with sarcasm, cut them down to size. To get close to you, I have to be patient. I have to prove myself sincere. Only then will you grant me access. And in your embrace, I will feel what no one else will ever feel: your desperately tender words exhaled on the skin of my neck.

TRIPLEX SANS LIGHT 7/10 POINT

TRIPLEX SERIF

ABCDEFGHIJgabcdefg

1. LIGHT

ABCDEFGHIJgabcdefg

2. BOLD

ABCDEFGHIJgabcdefg

3. EXTRA BOLD

NUMERALS:
LINING, OLD STYLE

\$95.00

13 FONT VOLUME

INCLUDES ALL 13 TRIPLEX FONTS.

\$332.00 | SAVE \$83

TRIPLEX OPENTYPE

INCLUDES ALL TRIPLEX FONTS,
PLUS ADDITIONAL FEATURES.

\$399.00

ABCDEFGH
IJKLMNOPQRS
TUVWXYZ
abcdefghijklm
nopqrstuvwxyz
0123456789
!@#%&*

TRIPLEX SERIF LIGHT 24 POINT

T

TRIPLEX SERIF EXTRA BOLD 172 POINT

abcdef

TRIPLEX SERIF LIGHT 60 POINT

Dear Triplex,

I have been warned against you. Our mutual friend—you know who—says to watch out. You are a comedian. You make jokes from the back of the room. I say, “Yes, but he dresses well, and a girl needs a man who can make a joke in a tuxedo.” You’d wear a tuxedo all the time, subverting your own formality with easy wisecracks, if it weren’t for the effort involved. She says I shouldn’t be fooled by simplicity. You’re tall, but I catch you stooping in conversation, and though I wish you wouldn’t (bad for your back), I like to think it means you’re a good listener. You get serious about subjects you know about, though you don’t lecture on subjects you care about: too worried you’ll be misunderstood. You read feature stories in magazines, know the details, quote the sources. You talk seriously about your hobbies, never your loves. You will not expose your loves to the appetites and whims of others. She warns me that one day I will become nothing more than one of your jokes. But I say you will protect me with humor. You will distract my enemies with sarcasm, cut them down to size. To get close to you, I have to be patient. I have to prove myself sincere. Only then will you grant me access. And in your embrace, I will feel what no one else will ever feel: your desperately tender words exhaled on the skin of my neck.

TRIPLEX SERIF LIGHT 11/15 POINT

Dear Triplex,

I have been warned against you. Our mutual friend—you know who—says to watch out. You are a comedian. You make jokes from the back of the room. I say, “Yes, but he dresses well, and a girl needs a man who can make a joke in a tuxedo.” You would wear a tuxedo all the time, subverting your own formality with easy wisecracks, if it weren’t for the effort involved. She says I shouldn’t be fooled by simplicity. You’re tall, but I catch you stooping in conversation, and though I wish you wouldn’t (bad for your back), I like to think it means you’re a good listener. You get serious about subjects you know about, though you don’t lecture on subjects you care about: too

worried you’ll be misunderstood. You read feature stories in magazines, know the details, quote the sources. You talk seriously about your hobbies, never your loves. You will not expose your loves to the appetites and the whims of others. She warns me that one day I will become nothing more than one of your jokes. But I say you will protect me with humor. You will distract my enemies with sarcasm, cut them down to size. To get close to you, I have to be patient. I have to prove myself sincere. Only then will you grant me access. And in your embrace, I will feel what no one else will ever feel: your desperately tender words exhaled on the skin of my neck.

TRIPLEX SERIF LIGHT 7/9 POINT

COMEDIAN

I HAVE BEEN WARNED

TRIPLEX ITALIC LIGHT

AGAINST

TRIPLEX SERIF EXTRA BOLD

YOU

TRIPLEX SERIF EXTRA BOLD

OUR MUTUAL FRIEND

TRIPLEX SERIF LIGHT

you know who

TRIPLEX ITALIC EXTRA BOLD

SAYS

TRIPLEX SERIF EXTRA BOLD

TO WATCH OUT

TRIPLEX SERIF EXTRA BOLD

you are a

TRIPLEX ITALIC LIGHT

COMEDIAN

TRIPLEX SANS LIGHT

A GIRL

TRIPLEX SANS LIGHT

NEEDS

TRIPLEX ITALIC EXTRA BOLD

a man

TRIPLEX SERIF EXTRA BOLD

WHO CAN MAKE A

TRIPLEX SANS LIGHT

JOKE

TRIPLEX SANS EXTRA BOLD

IN A TUXEDO

TRIPLEX SERIF EXTRA BOLD

Cheeky

ABCDEFGHabcdefgh

ARBITRARY SANS REGULAR, BOLD: \$65

Hailing

ABCDEFGHIabcdefghi

BASE MONO NARROW THIN, REG., BOLD + ITALICS: \$95

LOVE

ABCDEFGHI

BACKSPACER ROUND, SQUARE: \$59

attain

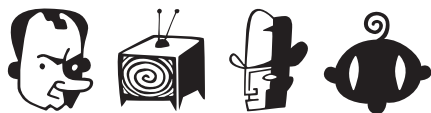
ABCDEFGHabcdefgh

BASE MONO WIDE THIN, REG., BOLD + ITALICS: \$95

Award

ABCDEFGHIabcdefghijkl

BASE 12 SANS REGULAR, ITALIC, BOLD + SM. CAPS: \$95



BIG CHEESE 126 ILLUSTRATIONS: \$59

Inspire

ABCDEFGHabcdefgh

BASE 12 SERIF REGULAR, ITALIC, BOLD + SM. CAPS: \$95

Humor

ABCDEFGHabcdefgh

BLOCKHEAD ALPHABET: \$65

Ankle

ABCDEFGabcdefghijkl

BASE 9 REGULAR, ITALIC, BOLD + SM. CAPS: \$95



BLOCKHEAD 372 ILLUSTRATIONS: \$59

HOPE

ABCDEFGHabcdefgh

BROTHERS REG., SLANT, BOLD + WORD LOGOS: \$95

glimpse

ABCDEFGHIABCDEFGHI

CHOLLA WIDE AND UNICASE: \$95

Emotion

ABCDEFGHIjabcdefghij

CHOLLA SANS THIN, REGULAR, ITALIC AND BOLD: \$95

karma

ABCDEFGHabcdefgh

CHOLLA ADDITIONAL WIDES + ITALICS: \$95

Flashes

ABCDEFGHabcdefgh

CHOLLA SLAB THIN, REGULAR, OBLIQUE AND BOLD: \$95

WINE

ABCDEFGHabcdefgh

CITIZEN LIGHT AND BOLD: \$65

Rank

ABCDEFGHabcdefgh

CHOLLA SLAB ULTRA BOLD, ULTRA BOLD OBLIQUE: \$39

PROMISES

ABCDEFGHIJKABCDEFGHIJK

COUNCIL REGULAR + WORD LOGOS: \$65

friendly

ABCDEFGHIjabcdefghi

CHOLLA ADDITIONAL ITALICS PACKAGE: \$95

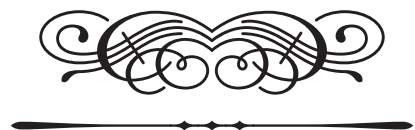
Avenue

ABCDEFGHabcdefgh

DALLIANCE ROMAN, LIGS, SM. CAPS AND FRAC.: \$65

Artsy
A B C D E F a b c d e f g h

DALLIANCE SCRIPT, LIGATURES, DISPLAY AND FRAC.: \$65



DALLIANCE FLOURISHES: \$39

SORRY

ABCDEFGHIJABCDEFGHI

DOGMA OUTLINE AND EXTRA OUTLINE: \$59

Exhaust

ABCDEFGHIJABCDEFGHI

EIDETIC NEO REG., ITALIC, BOLD AND BOLD ITALIC: \$95

Hungry

ABCDEFGHIJABCDEFGHI

DEAD HISTORY ROMAN AND BOLD: \$65

Tender

ABCDEFGHIJABCDEFGHI

EIDETIC NEO BLACK, OMNI, SM.CAPS AND FRACTIONS: \$95

Lights

ABCDEFGHIJABCDEFGHI

DEMOCRATICA REGULAR AND BOLD: \$65

Tuxedo

ABCDEFGHIJABCDEFGHI

ELEKTRIX LIGHT AND BOLD: \$65

NUN

ABCDEFGHIJABCDEFGHI

DOGMA BOLD, SCRIPT AND BLACK: \$95

Subjected

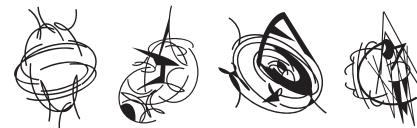
ABCDEFGHIJABCDEFGHI

ELLIOTT'S 6 FONT SET: \$95

FLYING

ABCDEFGHIJABCDEFGHI

EXOCET LIGHT AND HEAVY: \$65



FELLAPARTS 170 ILLUSTRATIONS: \$59

Strolling

ABCDEFGHIJABCDEFGHI

FAIRPLEX NARROW BOOK AND BOLD: \$95

Dating

ABCDEFGHIJABCDEFGHI

FILOSOFIA REGULAR, ITALIC, BOLD AND SMALL CAPS: \$95

WILD

ABCDEFGHIJABCDEFGHI

FAIRPLEX NARROW MEDIUM AND BLACK: \$95

HONEST

ABCDEFGHIJABCDEFGHI

FILOSOFIA GRAND, GRAND BOLD AND UNICASE: \$95

Money

ABCDEFGHIJABCDEFGHI

FAIRPLEX WIDE BOOK AND BOLD: \$95



HYPNOPAEDIA 140 ILLUSTRATIONS: \$59

Flame

ABCDEFGHIJABCDEFGHI

FAIRPLEX WIDE MEDIUM AND BLACK: \$95

darling

ABCDEFGHIJABCDEFGHI

JOURNAL TEXT, ITALIC AND ULTRA: \$95

funny

ABCDEabcdefg

JOURNAL BOLD AND ULTRA BOLD: \$65

Judge

ABCDEFGHabcdefgh

LOS FELIZ ROMAN, ITALIC, BOLD AND BOLD ITALIC: \$95

Beautiful

ABCDEFGGabcdefgh

KEEDY SANS REGULAR AND BOLD: \$65

stories

ABCDEFGHlabcdefghi

LUNATIX LIGHT AND BOLD: \$65

G I A L

ABCDEFGGabcdefgh

LO-RES NINES: \$95

Antenna

ABCDEFGGabcdefgh

MALAGA REGULAR, BOLD AND ITALICS: \$95

western

ABCDEFabcdefghi

LO-RES TEENS: \$65

North

ABCDEFGGabcdefgh

MALAGA MEDIUM, BLACK AND ITALICS: \$95

distinctions

ABCDEFGGHabcdefgh

LO-RES TWENTIES: \$65

Timeless

ABCDEFGHIJabcdefghi

MALAGA NARROW REGULAR, BOLD AND ITALICS: \$95

Canyon

ABCDEFGHIJabcdefghi

MALAGA NARROW MEDIUM, BLACK AND ITALICS: \$95

AMBITION

ABCDEFGGABCDEF

MATRIX II SM. CAPS BOOK, REGULAR AND BOLD: \$65

RESPECT

ABCDEFGGABCDEF

MASON SERIF REG., ALTERNATE, BOLD AND ALT. BOLD: \$95

DINER

ABCDEFabcdefgh

MATRIX II EXTRA BOLD, NARROW AND WIDE: \$95

COOL

ABCDEFGGABCDEF

MASON SANS REG., ALTERNATE, BOLD AND ALT. BOLD: \$95

fantastic

ABCDEFGabcdefgh

MATRIX II SCRIPT BOOK, REGULAR AND BOLD: \$95

minimal

ABCDEFGGabcdefgh

MATRIX II BOOK, REGULAR AND BOLD: \$95

WHATEVER

ABCDEFghIjabcdefghij

MATRIX II TALL REGULAR AND SEMI: \$35

Solution

ABCDEFGGabcdefgh

MATRIX II ITALIC BOOK, REGULAR AND BOLD: \$95

THEM

ABCDEFabcdefgh

MATRIX INLINE EXTRA BOLD AND SCRIPT: \$65

WRITING

À. B. C. D. E. F. G. a. b. c. d. e. f. g.

MISSIONARY ILLUSTRATION FONT: \$95

TEDIOUS

ABCDEFGHIJabcdefghij

MODULA SANS REGULAR, BOLD AND BLACK: \$95

UNDERSTANDING

ABCDEFGHIJabcdefghij

MODULA SERIF REGULAR, BOLD AND BLACK: \$95

DEVOTION

ABCDEFGHIJKLMabcdefghij

MODULA ROUND SANS BLACK AND SM. CAPS: \$65

Distractions

ABCDEFGHIJKLMabcdefghij

MODULA ROUND SERIF BLACK AND ULTRA + SM. CAPS: \$65

compliment

ABCDEFGHIJKLMabcdefghij

MODULA RIBBED AND OUTLINED + SMALL CAPS: \$59

modern

ABCDEFGHIGabcdefgh

MOTION LIGHT AND BOLD: \$65

forgiven

ABCDEFGHIHabcdefgh

MRS EAVES ROMAN, ITALIC, BOLD AND SMALL CAPS: \$95

ffrky

MB LA Æ U P ç t g i p ï t s p

MRS EAVES JUST LIGS, ROMAN, ITALIC AND BOLD: \$59

MILITARY

ABCDEFGHIABCDEFGHI

NARLY LIGHT, REG., BOLD, INLINE AND OUTLINE: \$65

Bridges

ABCDEFGHIABCDEFGHI

NOT CASLON: \$65

HEARTY

ABCDEFGHIJKLabcdefghij

OBLONG REGULAR AND BOLD: \$65

Nerves

ABCDEFGHIHabcdefgh

OTTOMAT BOOK, ITALIC AND BOLD: \$95

MANY

ABCDEFGHIHabcdefgh

OUTWEST LIGHT, DARK, HALF EMPTY AND HALF FULL: \$65

maid

ABCDEFGHIabcdefgh

PLATELET THIN, REGULAR AND HEAVY: \$95



POPPI 777 PICTOGRAMS: \$95

SILENCE

ABCDEFGHIabcdefghi

PRIORI SANS REG., BOLD, + ALTS AND SM. CAPS: \$95

Historic

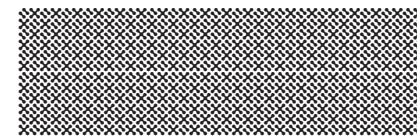
ABCDEFGHIGabcdefghi

PRIORI SERIF REG., BOLD, + ALTS AND SM. CAPS: \$95

ROCK

ABCDEFGHI|abcdefghij

PRIORI SANS EXTREMES LIGHT, ULTRA LIGHT, BLACK: \$95



PUZZLER 268 PATTERN ELEMENTS: \$95

Cradle

A B C D E F G a b c d e f g

REMEDY SINGLE, DOUBLE AND EXTRAS: \$95

ANIMATE

A B C D E F G H I J K a b c d e f g h i j

SOLEX MEDIUM, MED. ITALIC, BLACK AND BL. ITALIC: \$95

Bravery

A B C D E F G a b c d e f g

SABBATH BLACK REGULAR AND HEAVY: \$65

MOVIE

A B C D E F G H I a b c d e f g h i

SUBURBAN LIGHT AND BOLD: \$65

TYPEWRITER

A B C D E F G H I J K L a b c d e f g h i j k

SENATOR THIN, DEMI AND ULTRA: \$95

Popcorn and SODA

A B C D E a b c d e A B C D E a b c d e A B C D E a b c d e

TALL PACK \$95

monotone

A B C D E F G H I J K L M N O P Q a b c d e f g h i j k l m n o p q r

SODA SCRIPT LIGHT, BOLD AND EXTRAS: \$65

Endings

A B C D E F G H I J K a b c d e f g h i j

TARZANA NARROW REG., ITALIC, BOLD AND B. ITALIC: \$95

Familiar

A B C D E F G H I J K a b c d e f g h i j

SOLEX REGULAR, ITALIC, BOLD AND BOLD ITALIC: \$95

Knoll

A B C D E F G a b c d e f g h

TARZANA WIDE REG., ITALIC, BOLD AND BOLD ITALIC: \$95

Service

A B C D E F G H a b c d e f g

TEMPLATE GOTHIC REGULAR AND BOLD: \$65



THINGBAT 111 ILLUSTRATIONS: \$59

ANSWER

A B C D E F G H a b c d e f g h i

TOTALLY GOTHIC AND GLYPHIC: \$65

Literary

A B C D E F G a b c d e f g h

TRIBUTE ROMAN AND ITALIC + SM. CAPS AND LIGS: \$95

Quickly

A B C D E F G H I a b c d e f g h i

TRIPLEX SANS LIGHT, BOLD AND EXTRA BOLD: \$95

Hailing

A B C D E F G H I a b c d e f g h

TRIPLEX SERIF LIGHT, BOLD AND EXTRA BOLD: \$95

Demanding

A B C D E F G H I J K L M N a b c d e f g h i j k l m

TRIPLEX CONDENSED SANS REGULAR AND BLACK: \$65

Approach

A B C D E F G H I J K L M a b c d e f g h i j k l m

TRIPLEX CONDENSED SERIF REGULAR AND BLACK: \$65

fantastic

A B C D E F G H a b c d e f g h i

TRIPLEX ITALIC LIGHT, BOLD AND EXTRA BOLD: \$95

braid

A b c d e f g a b c d e f

VARIEX LIGHT, REGULAR AND BOLD: \$95

Reckless

ABCDEFGHIabcdefghijkl

VENDETTA LIGHT, ITAL., SM. CAPS, FRAC., + BOLD, : \$95

Paramount

ABCDEFGHIabcdefghijkl

VISTA NARROW PACKAGE THREE: \$95

Exhaust

ABCDEFGHIabcdefghijkl

VENDETTA MEDIUM, ITAL., SM. CAPS, FRAC., + BOLD: \$95

Raider

ABCDEFGHIabcdefghijkl

VISTA SLAB PACKAGE ONE: \$95

Change

ABCDEFGHIabcdefghijkl

VISTA SANS PACKAGE ONE: \$95

Quantity

ABCDEFGHIabcdefghijkl

VISTA SLAB PACKAGE THREE: \$95

Grinning

ABCDEFGHIabcdefghijkl

VISTA SANS PACKAGE THREE: \$95



WHIRLIGIG 152 ILLUSTRATIONS: \$59

Mantra

ABCDEFGHIJabcdefghijklk

VISTA SANS NARROW PACKAGE ONE: \$95



ZEITGUYS 126 ILLUSTRATIONS: \$59

EMIGRE PRODUCT INFO

Emigre Magazine Back Issues

A small number of back issues remain available. These collectors' copies (available in limited quantities) start at \$12.00. Visit our web site for a full showing of available issues and prices.

Art and Design

Browse Emigre's *Art and Design* section on-line. There you'll find T-shirts, artists' books, posters, wrapping paper, ceramic vases, prints, photographs, and the always popular *Sampler Bag* containing a collection of Emigre goodies.

Emigre Type Catalog

To order a copy of *The Emigre Type Catalog* go to: www.emigre.com/catalog

Emigre News

Add yourself to the *Emigre News* emailing list. We use *Emigre News* to help keep you informed of new products, services, and special limited offers. To sign up go to: www.emigre.com/enews

Mailing List

Help us keep our email and mailing lists up to date. You can change your email address, or take yourself off our mailing list at: www.emigre.com/maillinglist

HOW TO ORDER

Order On-line

www.emigre.com
 Fonts are available for immediate download. All other items are shipped within five business days.

Order by Fax

Print out a faxable order form at: www.emigre.com/fax
 and fax to: (530) 756 1300

Order by Mail

Mail the fax form and enclose payment by check or charge your credit card. All checks must be payable through a US bank, in US dollars.
 Mail to:
 Emigre
 1700 Shattuck Ave., #307
 Berkeley, CA 94709
 USA

Copyright © 2008 Emigre, Inc. All rights reserved. No part of this publication may be reproduced without written permission from Emigre, Inc. Emigre, Emigre Fonts, Arbitrary, Backspacer, Base, Big Cheese, Elliott's Blue Eye Shadow, Brothers, Cholla, Citizen, Council, Dalliance, Dead History, Democratica, Dogma, Eidetic Neo, Elektriz, Emperor, Emigre, Exocet, Fairplex, FellaParts, Filoso?a, Hypnopaedia, Elliott's Jigsaw Dropshadow, Journal, Just Ligatures, Keedy, LigationMaker, Los Feliz, Lo-Res, Lunatix, Malaga, Mason, Matrix, Matrix II, Missionary, Modula, Motion, Mrs Eaves, Narly, Not Caslon, Oakland, Oblong, Ottomat, OutWest, Platelet, Poppi, Priori, Puzzler, Quartet, Remedy, Sabbath Black, Senator, Smart Ligatures, Soda Script, Solex, Suburban, Tarzana, Template Gothic, Tribute, Totally Gothic, Triplex, Elliott's Thyphoid Mary 3D, Universal, Variex, Vendetta, Elliott's Venus Dioxide, Vista, Whirligig and ZeitGuys are Trademarks of Emigre, Inc. PostScript, OpenType, and InDesign are trademarks of Adobe Systems Inc., TrueType is a trademark of Apple Computer, Inc. Prices and availability subject to change without notice.

EMIGRE

1700 SHATTUCK AVE., #307
BERKELEY, CA 94709
U.S.A.

Change Service Requested



EST. 1984

PRSRST STD
U.S. POSTAGE
PAID
DENVER, CO
PERMIT NO. 3280

WWW.EMIGRE.COM

TO CHANGE OR UPDATE YOUR ADDRESS
EMAIL SALES@EMIGRE.COM