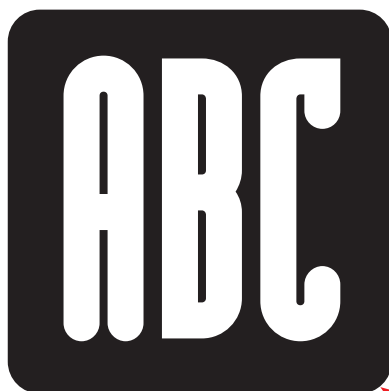
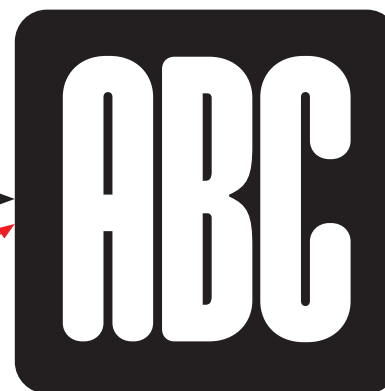


MODULAR
TIER

EMIGRE
FONTS



MODULA ROUND BLACK, 1995



MODULATOR 100 MEDIUM, 2026

MODULATOR IS A SPIN-OFF, INSPIRED BY TWO DIFFERENT DESIGNS, BORN IN DIFFERENT ERAS: **MODULA ROUND BLACK**, DESIGNED IN **1995**, AND **LO-RES MONOSPACED SOLID**, DESIGNED IN **2023**. MODULA ROUND WAS THE STARTING POINT FOR **MODULATOR 100 MEDIUM**, WHEREAS THE SQUARE PROPORTIONS OF LO-RES MONOSPACED SOLID BECAME **MODULATOR 350 HEAVY**.
DESIGNED BY ZUZANA LICKO FOR EMIGRE.

THE IDEA STARTED WHEN LICKO IMAGINED HOW **LO-RES MONOSPACED SOLID** MIGHT LOOK WITH **ROUNDED EDGES**. THE MODULARITY AND SLIM COUNTERS OF THIS **NEW DESIGN** ECHOED SOME OF THE FEATURES OF **MODULA ROUND BLACK**, AND SHE REALIZED HOW, WITH SOME MODIFICATIONS, THOSE TWO DESIGNS COULD WORK TOGETHER IN THIS NEW FAMILY WHICH SHE ENDED UP CALLING **MODULATOR**.



LO-RES MONOSPACED SOLID, 2023



MODULATOR 350 HEAVY, 2026

TO MAKE THESE TWO DESIGNS COMPATIBLE IN THE NEW FONT, SHE MADE MODULA UNICASE, AND TIGHTENED THE COUNTERS IN LO-RES. USING INTERPOLATION, SHE THEN CREATED THREE INTERMEDIATE VERSIONS BETWEEN THESE TWO INITIAL EXTREMES, 100 AND 350.



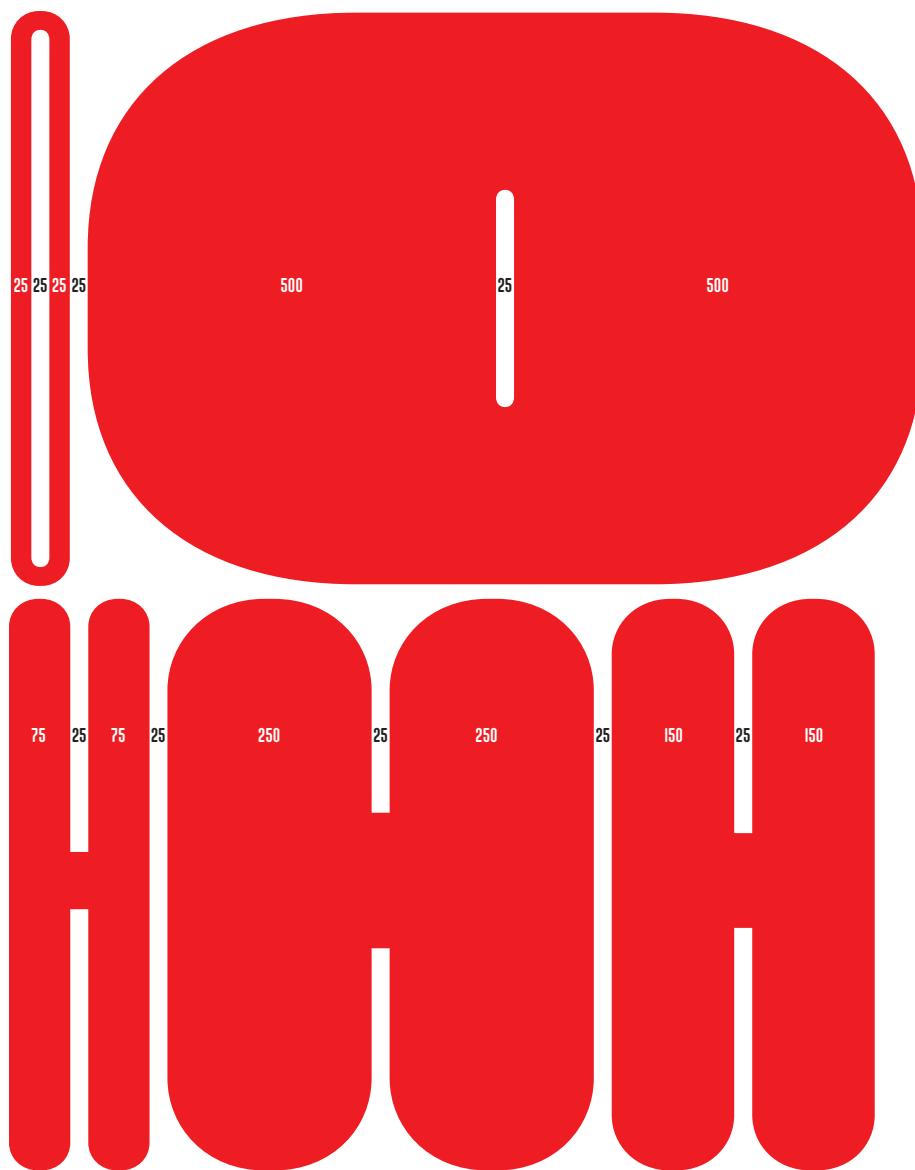
NOT SATISFIED WITH THE RANGE, LICKO ADDED TWO ADDITIONAL ACCENTUATING WEIGHTS AT THE EXTREMES, EXPANDING THE FAMILY TO A TOTAL OF NINE FONTS.



IN THE FONT NAMING, THE NUMBER REFERS TO THE STEM WIDTH.

1. MODULATOR 25 THIN
2. MODULATOR 50 THIN
3. MODULATOR 75 MEDIUM
4. MODULATOR 100 MEDIUM
5. MODULATOR 150 BOLD
6. MODULATOR 200 BOLD
7. MODULATOR 250 HEAVY
8. MODULATOR 350 HEAVY
9. MODULATOR 500 BLACK

WHILE THE STEM WEIGHTS VARY, ALL NINE STYLES SHARE THE SAME COUNTER WIDTH. THIS REPETITION OF SHAPE AND SPACE CREATES A UNIFYING RHYTHM.



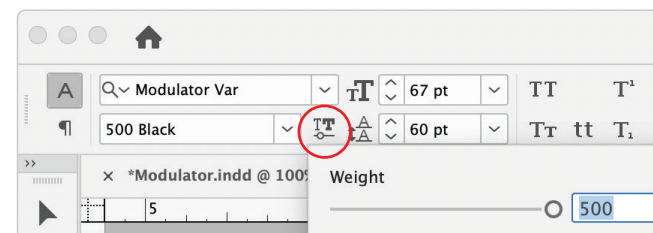
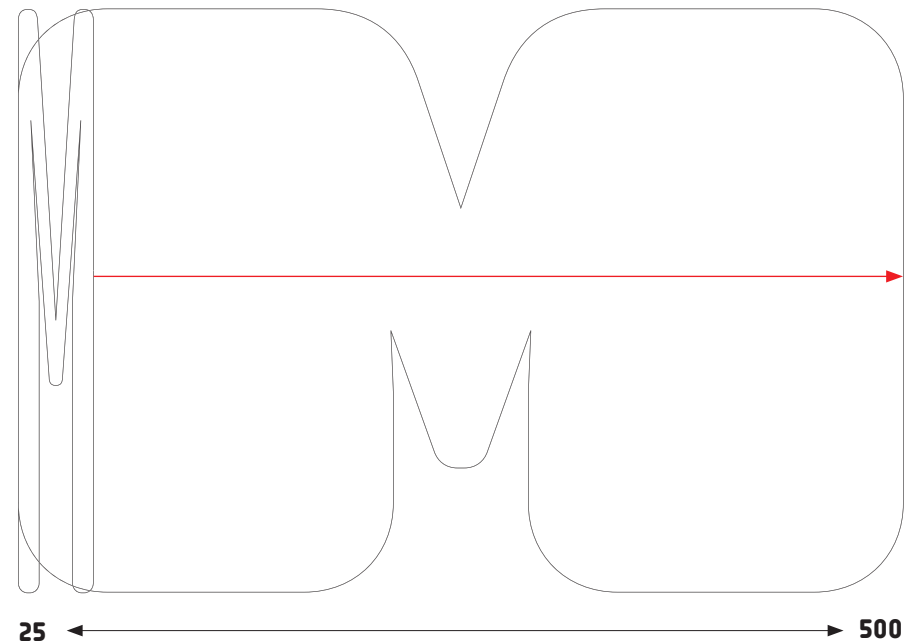
ANOTHER DESIGN CHARACTERISTIC OF MODULATOR IS THE TRANSFORMATION FROM **VERTICAL STROKES** TO **HORIZONTAL STROKES**, WHICH HAPPENS BETWEEN THE BOLD AND HEAVY, SEEN IN GLYPHS LIKE THE LETTER **S** OR NUMBER **3**. THE SHAPES REQUIRED FOR THIS MORPHING LEAD TO SOME SURPRISING FORMS.



ALTHOUGH MODULATOR IS AN ALL-CAPS DESIGN, THE LETTERS **E**, **M**, AND **N** WERE GIVEN ALTERNATIVE GLYPHS IN THE LOWER CASE TO PROVIDE SOME VARIETY AND FLEXIBILITY WHEN CUSTOMIZING HEADLINES.



THE VARIABLE VERSION OF MODULATOR CONTAINS A CONTINUOUS RANGE OF STYLE VARIATIONS, ALLOWING DESIGNERS TO USE A **SLIDER** TO PICK ANY POINT BETWEEN EXTREMES, RATHER THAN BEING LIMITED TO PRESET STYLES IN SEPARATE FILES, WHICH ALLOWS FOR PRECISE FITTING AND SAVES DATA.



USE THE SLIDER IN INDESIGN TO INCREASE OR DECREASE THE STROKE WEIGHT.

A SECONDARY VARIABLE FONT, **MODULATOR TEXT**, PROVIDES A RANGE OF WIDTHS THAT ARE A BIT MORE SUITABLE FOR SMALL SIZES AND TEXT APPLICATIONS. THIS "TEXT" VERSION INCREASES THE STEM WEIGHT **AND** COUNTER WIDTH, UP TO SIX TIMES THAT OF THE EXTREME NARROW WIDTH, STARTING WITH THE 25 STEM VERSION, WITH A 22 COUNTER SPACE, AND STRETCHING OUT TO THE 150 STEM VERSION WITH A 132 COUNTER SPACE. ALL TEXTS IN THIS BOOKLET ARE SET IN MODULATOR TEXT 150 REGULAR.



THE STEMS AND COUNTERS OF MODULATOR 25 THIN WERE SCALED 6X TO BECOME MODULATOR TEXT 150 REGULAR.



1. **MODULATOR TEXT 50 COMPRESSED** (ONLY AVAILABLE IN THE VARIABLE FONT)
2. **MODULATOR TEXT 75 CONDENSED**
3. **MODULATOR TEXT 100 NARROW**
4. **MODULATOR TEXT 150 REGULAR**

NEXT CAME THE DEVELOPMENT OF **MODULATOR MONOSPACED** WHICH BEGAN BY ADAPTING **MODULATOR 350 HEAVY**, UTILIZING ITS SQUARE PROPORTION. SERIFS WERE ADDED TO THE NUMERAL **1**, AND LETTERS **I** AND **L**, IN ORDER TO FILL OUT THE SPACE OF THE MONO WIDTH.



MODULATOR 350 HEAVY IS THE FOUNDATION FOR MODULATOR MONOSPACED.

CREATING NARROWER MONOSPACED VERSIONS PROVED MORE DIFFICULT. IT REQUIRED ADJUSTING THE STEM WEIGHTS IN ORDER TO FIT THESE CHARACTERS INTO THEIR PREDETERMINED MONO WIDTH, WHILE PRESERVING THE UNIFORM COUNTER WIDTH. THIS CAUSED THEM TO APPEAR EITHER TOO LIGHT OR TOO BOLD WITHIN THEIR WIDTH GROUP.



NARROWER MONOSPACED VERSIONS RESULTED IN VISIBLY UNEVEN STEM WEIGHTS.



THESE IRREGULAR RESULTS SPARKED THE IDEA FOR **MODULATOR MIX**, A VERSION WITH MIXED WIDTH GLYPHS WITHIN ONE FONT.

MODULATOR MIX ALTERNATES AMONG FOUR DIFFERENT MONOSPACED WIDTHS. AS TEXT IS TYPED, THE CONTEXTUAL ALTERNATES OPENTYPE FEATURE DRIVES THE AUTOMATIC MIXING OF THE WIDTHS.* EACH WIDTH IS A MULTIPLE OF THE NARROWEST, SO TEXT LINES UP VERTICALLY IN SPORADIC INCREMENTS.

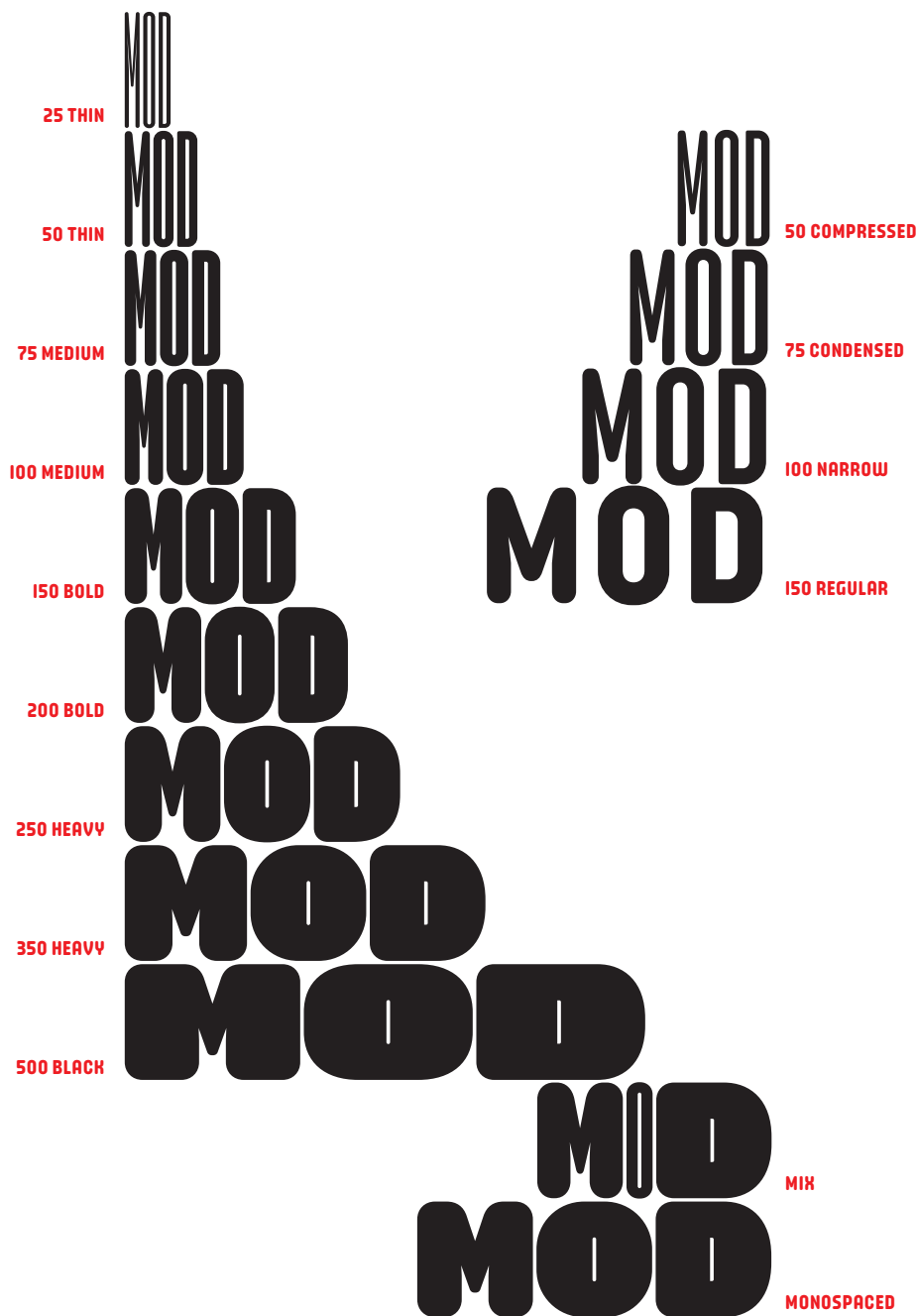
* MANY THANKS TO TAL LEMING FOR HIS BRILLIANT FEATURE SCRIPT THAT MAKE THE MIX FONT ACROBATICS POSSIBLE.

MODULATOR IS A
SPIN-OFF OF TWO
VERY DIFFER-
ENT DESIGNS:
MODULA ROUND
& L-RS MONO-
SPACED SOLID.

MODULATOR

OVERVIEW

MODULATOR TEXT



ABCDEFGHIJKLMNOPQRSTUVWXYZ0123456789

ABCDEFGHIJKLMNOPQRSTUVWXYZ0123456789

ABCDEFGHIJKLMNOPQRSTUVWXYZ0123456789

ABCDEFGHIJKLMNOPQRSTUVWXYZ0123456789

ABCDEFGHIJKLMNOPQRSTUVWXYZ0123456789

ABCDEFGHIJKLMNOPQRSTUVWXYZ0123456789

ABCDEFGHIJKLMNOPQRSTUVWXYZ0123456789

ABCDEFGHIJKLMNOPQRSTUVWXYZ0123456789

ABCDEFGHIJKLMNOPQRSTUVWXYZ0123456789

1. MODULATOR 25 THIN
2. MODULATOR 50 THIN
3. MODULATOR 75 MEDIUM
4. MODULATOR 100 MEDIUM
5. MODULATOR 150 BOLD
6. MODULATOR 200 BOLD
7. MODULATOR 250 HEAVY
8. MODULATOR 350 HEAVY
9. MODULATOR 500 BLACK

ABCDEFGHIJKLMNOPQRSTUVWXYZ0123456789

ABCDEFGHIJKLMNOPQRSTUVWXYZ0123456789

ABCDEFGHIJKLMNOPQRSTUVWXYZ0123456789

ABCDEFGHIJKLMNOPQRSTUVWXYZ

1. MODULATOR TEXT 50 COMPRESSED (ONLY AVAILABLE IN THE VARIABLE FONT)

2. MODULATOR TEXT 75 CONDENSED

3. MODULATOR TEXT 100 NARROW

4. MODULATOR TEXT 150 REGULAR

ABCDEFGHIJKLMNOPQRSTUVWXYZ

ABCDEFGHIJKLMNOPQRSTUVWXYZ

1. MODULATOR MONOSPACED

2. MODULATOR MIX

WIDE
WIDER
WID-
EST

NARROW
NARROWER
NARROWEST

MODULATOR 250 HEAVY
MODULATOR 350 HEAVY
MODULATOR 500 BLACK

MODULATOR 150 BOLD
MODULATOR 50 THIN
MODULATOR 25 THIN

FAT
FAT TEEA
FAT-
TEST

THIN
THINNER
THINNEST

MODULATOR 200 BOLD
MODULATOR 350 HEAVY
MODULATOR 500 BLACK

MODULATOR 75 MEDIUM
MODULATOR 50 THIN
MODULATOR 25 THIN

LOUD
LOUDER
LOUD-
EST

SOFT
SOFTER
SOFTTEST

MODULATOR 150 BOLD
MODULATOR 250 HEAVY
MODULATOR 500 BLACK

MODULATOR 100 MEDIUM
MODULATOR 50 THIN
MODULATOR 25 THIN

**BIG
BIGGER
BIG-
GEST**

**MODULATOR 150 BOLD
MODULATOR 250 HEAVY
MODULATOR 500 BLACK**

**SMALL
SMALLER
SMALLEST**

**MODULATOR 100 MEDIUM
MODULATOR 50 THIN
MODULATOR 25 THIN**

DARK

DARKER

DARKEST

EST

LIGHT

LIGHTER

LIGHTEST

MODULATOR 250 HEAVY
MODULATOR 350 HEAVY
MODULATOR 500 BLACK

MODULATOR 150 BOLD
MODULATOR 75 MEDIUM
MODULATOR 25 THIN

LARGE
LARGER
LARGEST

SLIM
SLIMMER
SLIMMEST

MODULATOR 200 BOLD
MODULATOR 250 HEAVY
MODULATOR 500 BLACK

MODULATOR 150 BOLD
MODULATOR 50 THIN
MODULATOR 25 THIN

BULKY
BULKIER
BULKIER-
BEST

TINY
TINIER
TINIEST

MODULATOR 250 HEAVY
MODULATOR 350 HEAVY
MODULATOR 500 BLACK

MODULATOR 100 MEDIUM
MODULATOR 75 MEDIUM
MODULATOR 50 THIN

DO
YOU
READ
ME?

DO
YOU
READ
ME?

DO
YOU
READ
ME?

DO
YOU
READ
ME?

MODULATOR MIX

DYRM
OOEE
UARD?

MODULATOR MONOSPACED

DO YOU READ ME? DO YOU READ ME? DO YOU READ
ME? DO YOU READ ME? DO YOU
READ ME? DO YOU READ ME? DO YOU READ ME?
DO YOU READ ME? DO YOU READ ME?

MODULATOR TEXT

WWW.EMIGRE.COM

EMIGRE TYPE CATALOGS

TO RECEIVE EMIGRE TYPE SPECIMENS BY MAIL FOR FREE GO TO:

EMIGRE.COM/TYPESPECIMENS

PRINTED COPIES OF EMIGRE'S PAST TYPE SPECIMENS ARE AVAILABLE FOR SALE, AND FOR FREE AS DOWNLOADABLE PDF FILES AT:

EMIGRE.COM/TYPESPECIMENS

EMIGRE MAGAZINE

BROWSE THE FULL RUN OF **EMIGRE** MAGAZINE IN HIGH RESOLUTION AT LETTERFORM ARCHIVE: OA.LETTERFORMARCHIVE.ORG

ISSUES NO. 64 - 69 ARE AVAILABLE FOR FREE AS DOWNLOADABLE PDF FILES AT:

EMIGRE.COM/MAGAZINE/PDF

EMIGRE APP

VIEW AND READ ALL PAGES OF THE ENTIRE COLLECTION OF EMIGRE FONTS TYPE SPECIMENS, AND ALL ISSUES OF **EMIGRE** MAGAZINE, IN THIS EASY-TO-USE APP MADE FOR GRAPHIC DESIGNERS AND TYPE AFICIONADOS ALIKE. DOWNLOAD FOR FREE FROM THE APPLE STORE AT: EMIGRE.COM/APP



MAILING LIST

HELP US KEEP OUR EMAIL AND MAILING LISTS UP TO DATE. YOU CAN CHANGE YOUR EMAIL ADDRESS, OR TAKE YOURSELF OFF OUR MAILING LIST AT: EMIGRE.COM/MYACCOUNT

EMIGRE

1700 SHATTUCK AVE., #307

BERKELEY, CA 94709

U.S.A.

INFO@EMIGRE.COM

COPYRIGHT © 2026 EMIGRE, INC. ALL RIGHTS RESERVED. NO PART OF THIS PUBLICATION MAY BE REPRODUCED WITHOUT WRITTEN PERMISSION FROM EMIGRE. EMIGRE, EMIGRE FONTS, MODULATOR, AND ALL FONT NAMES IN THIS PUBLICATION ARE TRADEMARKS OF EMIGRE, INC. ALL OTHER TRADEMARKS ARE THE PROPERTY OF THEIR RESPECTIVE OWNERS.

